



**SOLD**

## RENOVATED PERIOD HOME – ELEGANCE & CHARM CLOSE TO BATHURST CBD

This elegant, renovated period residence offers a rare lifestyle opportunity with its premium location just a short walk from Bathurst's vibrant CBD. Beyond the stunning facade, discover four generous bedrooms, large formal lounge, a brand new kitchen, new bathroom plus additional powder room, new laundry and lovely outside spaces. The home seamlessly blends classic charm with modern convenience, making it ideal for families, professionals or those looking for a great lifestyle in the heart of Bathurst.

Features include but not limited to:

- \* This exquisite property perfectly balances historical charm with modern conveniences in a flexible, spacious layout.
- \* The historic facade is complemented by the classic verandah, wrought iron fretwork and lead light windows, providing a welcoming entrance.
- \* Four spacious bedrooms, Main with decorative fireplace. These rooms retain original period features, including high ceilings, ornate cornices and ceiling roses.
- \* The extension to the rear blends in seamlessly with the original home, boasting a lovely new kitchen.
- \* The rear of the home includes an open plan kitchen, dining, and living area.
- \* Completely refreshed bathroom and powder room with tasteful contemporary design and the updated laundry are all light and functional.
- \* The back verandah is the perfect spot for alfresco dining and entertaining.
- \* Further outside additions include a huge 10m x 4m shed and off-street parking spaces.
- \* Situated in a prime location in the heart of Bathurst close to Schools, University, Childcare, Shopping, Dining, Public Transport and Parks, with a level stroll into the Bathurst CBD.

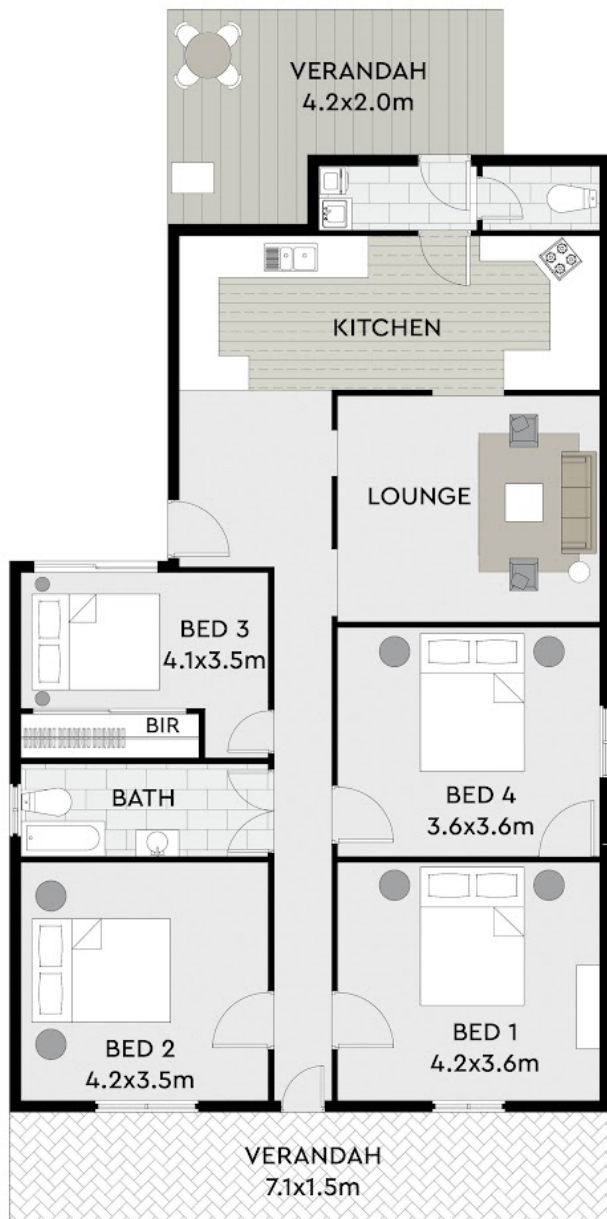
4 BED | 1 BATH | 1 CAR

PRICE:  
\$655,000

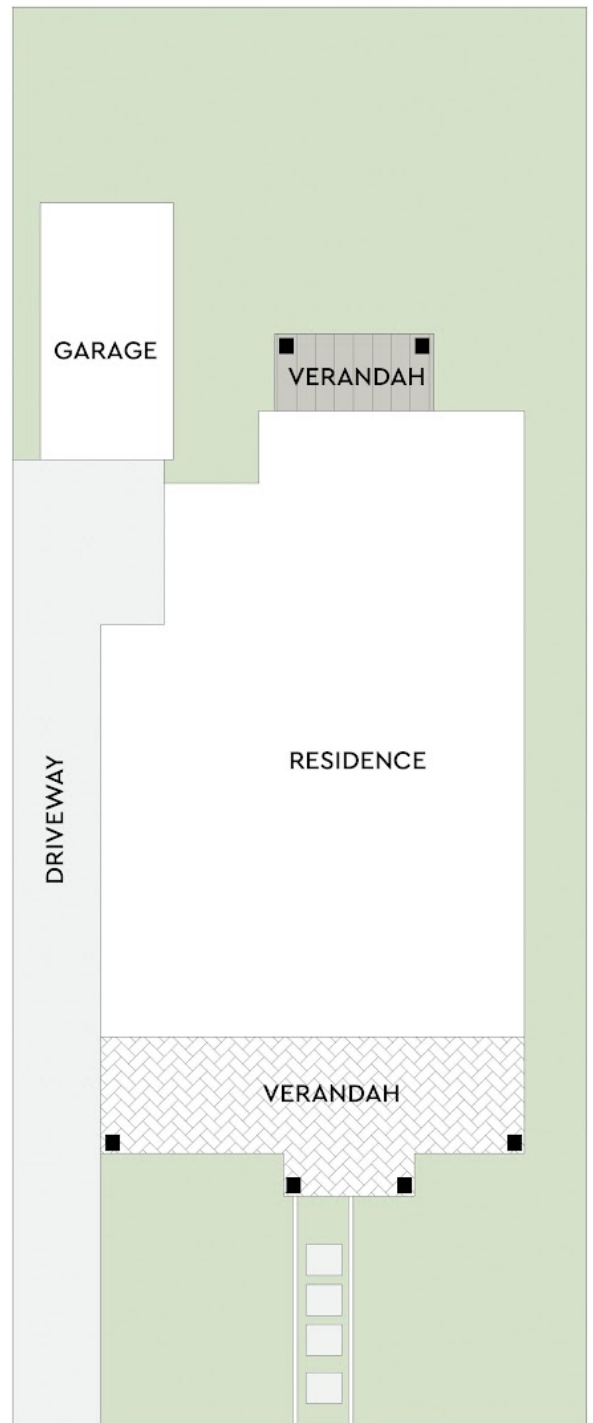
OPEN FOR INSPECTION:  
N/A



**Leanne Hurley**  
0417655002  
leanne@atrealty.com.au  
[www.atrealty.com.au](http://www.atrealty.com.au)



FLOOR PLAN



SITE PLAN

Disclaimer: Please note this floor plan is for marketing purposes and is to be used as a guide only. All dimensions are estimates only and may not be exact measurements.

**Leanne Hurley**

**0417655002**

leanne@atrealty.com.au

[www.atrealty.com.au](http://www.atrealty.com.au)



Information contained in this document is from sources we believe to be accurate, however we cannot guarantee its accuracy. Interested persons should make and rely on their own enquiries in relation to measurements, dimensions, layout, furniture and fixtures.