



SOLD

MODERN STYLE COLONIAL HOME | LARGE SHED

Located in one of SEQ top destinations is this stunning modern-style colonial home with lovely wide verandahs and nothing to do but just move in! This well-appointed property offers a grand entrance into a wide hallway with a gorgeous timber floor, double door entrances to a large formal lounge suite, and kitchen/dining area. Built by award-winning builder, "Tom Emmert Homes"

The well-appointed kitchen features an electric cooktop and oven, dishwasher, large pantry, and plenty of bench and cupboard space, it extends into the spacious air-conditioned dining area with sliding doors out to the front verandah.

There are three generous size bedrooms all with built-in wardrobes. The main bedroom offers a spacious en-suite and air conditioning. The back bedroom also has an air-conditioner.

Out the back is a large barn-style Shed with remote doors, this is perfect for your car parking but also large enough for a caravan and/or workshop. Behind the shed is a 5000-gallon rain water tank, which is connected to the house.

The property also includes:

- Ceiling fans
- Quality curtains and floor coverings.
- Large utility room/ laundry
- Rear access ramp
- 5000-litre rainwater tank
- Fully fenced
- Concrete driveway
- Rates \$902.00 half-year
- Water. \$320.00 half-year.

Crows Nest offers many lifestyle options, such as nature walks, boutique shopping, and wine & dine experiences, it makes sense to make it your hometown, and 17 Charles Street is sure not to disappoint.

Crows Nest is situated on the New England Hwy and a 2-hour drive will take you to the Sunshine Coast or Brisbane.

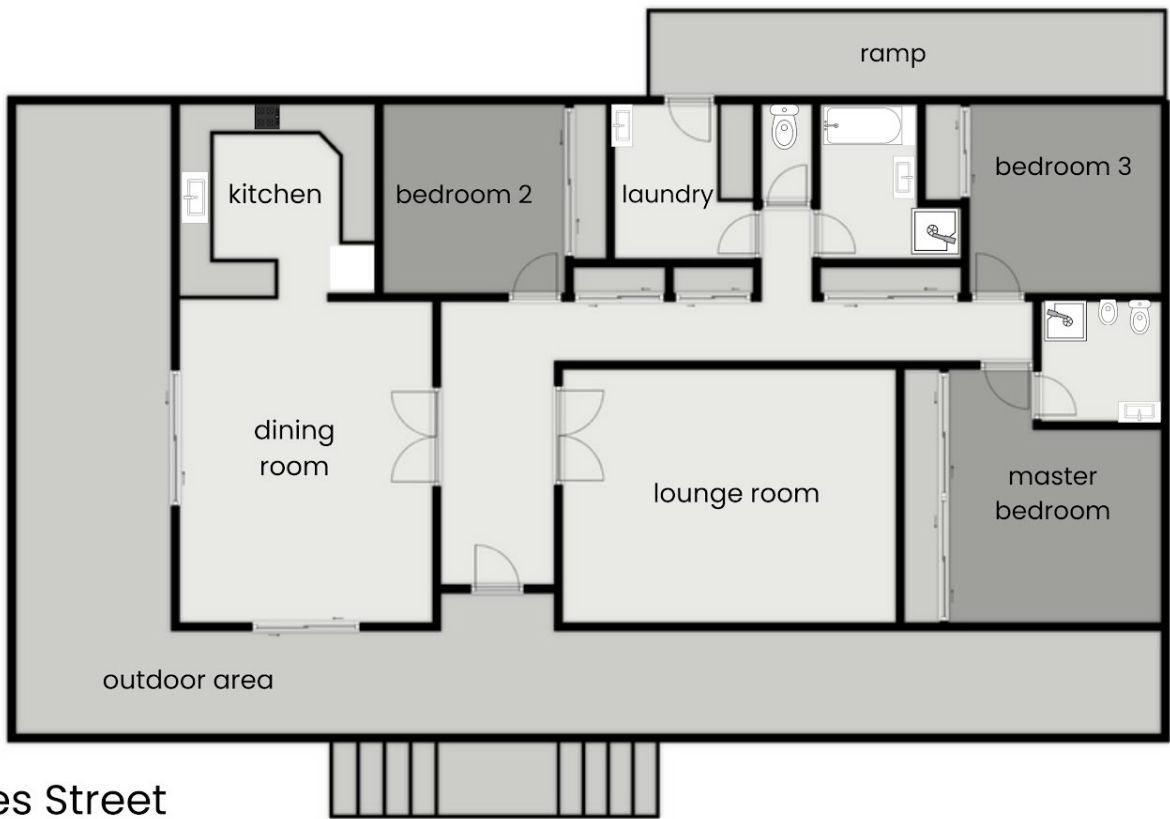
3 BED | 2 BATH | 3 CAR

PRICE:
\$675,000

OPEN FOR INSPECTION:
N/A



Yvonne Bradley
0408181146
yvonne@atrealty.com.au
www.atrealty.com.au



17 Charles Street
Crows Nest Qld 4355

This plan is not to scale and is for illustrative purposes only, measurements are approximate



Disclaimer: Please note this floor plan is for marketing purposes and is to be used as a guide only. All dimensions are estimates only and may not be exact measurements.

Yvonne Bradley
0408181146
yvonne@atrealty.com.au
www.atrealty.com.au

