



**SOLD**

## ULTIMATE SURPRISE PACKAGE-DUAL LIVING WITH THE MOST SPECTACULAR VIEW

UNDER OFFER  
OPEN HOME CANCELLED FOR SUNDAY 18TH AUGUST 11AM-12MD.

Nestled behind the unassuming facade of this dual level home reveals a hidden gem, the ultimate surprise package.

Upon entry capture a glimpse of the outlook and be immediately drawn to the heart of the home. Discover a sunlit kitchen and living area open onto an outdoor balcony, each space capturing magnificent sweeping views across the lush green dairy fields and tree-lined district, all the way to Cairncross mountain and Point Plumber.

Enjoy incredible sunrises, sunset skies and the thrill of watching storms rolling in. The north-east aspect combined with elevation invites in abundant natural light and breezes. For added comfort there is ducted-zoned reverse cycle air conditioning and ceiling fans throughout.

The main level features two generously sized bedrooms, comprising a master suite with garden views and a walk-in robe, as well as a guest bedroom with a sunset window and picture perfect lookout. Also on this level, you will find a spotless 3-way bathroom, walk-in linen closet, formal dining area, and a private lounge room that can easily convert into a super sized office or retreat style bedroom.

Downstairs is a sprawling area suitable to accommodate extended family, guests, or teenagers. This expansive domain features extensive under-house storage, perfect for a workshop and wine cellar, a huge multi-purpose room with a built-in bar, a light and airy bedroom, and a full bathroom. Even the laundry enjoys a view!

Outdoor entertaining is a delight with a sun-soaked backyard, terraced BBQ area, and garden shelter providing a shaded oasis for gatherings and the ideal children's play area.

Watch the world go by from the comfort of your own private haven with the convenience of being only 2kms from the CBD.

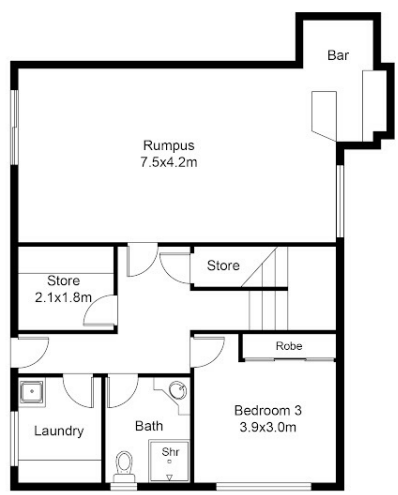
**3 BED | 2 BATH | 1 CAR**

PRICE:  
**\$750,000**

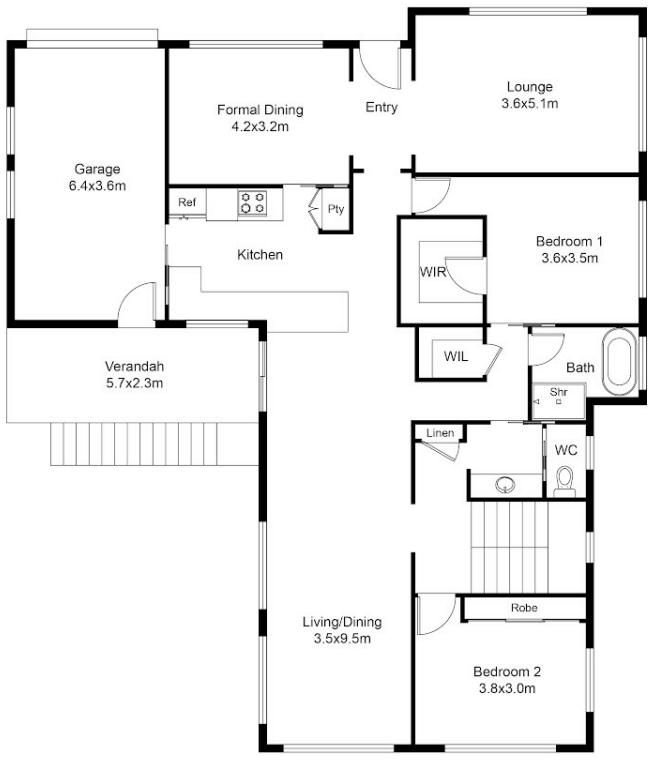
OPEN FOR INSPECTION:  
N/A



**Anthony Nardella**  
**0458756711**  
anthony@betterrealestate.com.au  
betterrealestate.com.au



LOWER LEVEL



UPPER LEVEL

Scale in metres. Dimensions are approximate. All information contained herein is gathered from sources we believe to be reliable, however we cannot guarantee its accuracy and interested persons should rely on their own enquiries

56 Cowarral Circuit, Wauchope

Disclaimer: Please note this floor plan is for marketing purposes and is to be used as a guide only. All dimensions are estimates only and may not be exact measurements.