



FOR SALE

FANTASTIC 4 BEDDER NEAR GOLF COURSE - MOVE IN STRAIGHT AWAY!

Creating a light, airy retreat perfect for modern family living, this four-bedroom home feels quiet and private on a generous block, situated moments from the golf course, local primary school, golf course and Palmerston's major shopping hub.

What we love about this home :

- Lovely ground-level family home on corner block in quiet setting
- Huge 213m2 under roof
- 480m2 allotment
- Practical, beautifully lit layout is spacious, versatile and effortless
- Distinct zones through generous open-plan living space
- Central kitchen boasts plentiful storage and modern appliances
- Covered alfresco overlooks grassy, fully fenced yard, great for kids
- Airy master features walk-in robe and neat ensuite with shower
- Three further robed bedrooms serviced by full family bathroom
- Tiled and air-conditioned to provide cool, low maintenance living
- Additional features include side yard access and garden shed
- Double garage at front, with gated sided access
- Fenced Rear spa

With everything in place for the homebuyer or investor, this ready-to-go property is a must-see on Durack's quiet fringes! Expanding over an impressively spacious single level, the home reveals a practical layout that families will love. At its heart, open-plan living reveals distinct zones that are as inviting as they are versatile, centred by a smartly presented kitchen featuring a spacious footprint. For parents, the large master offers a quiet retreat away from the three other robed bedrooms, complemented by a walk-in robe and ensuite. Like the ensuite and kitchen, the main bathroom is neat and functional as is, but could provide potential to add value with updates in time. Completing the interior is an internal laundry with yard access, while outside, relaxed family dining and entertaining is catered for in the covered alfresco. This lovely space looks out over the generous grassy yard, which is perfect for kids and pets, while remaining excellently easy to maintain. Outside there is also a handy garden shed to help keep clutter tidied away, with parking provided for in the double carport and gated side access to the yard.

Palmerston Council Rates : approx \$1960 per year
Year built : 2005

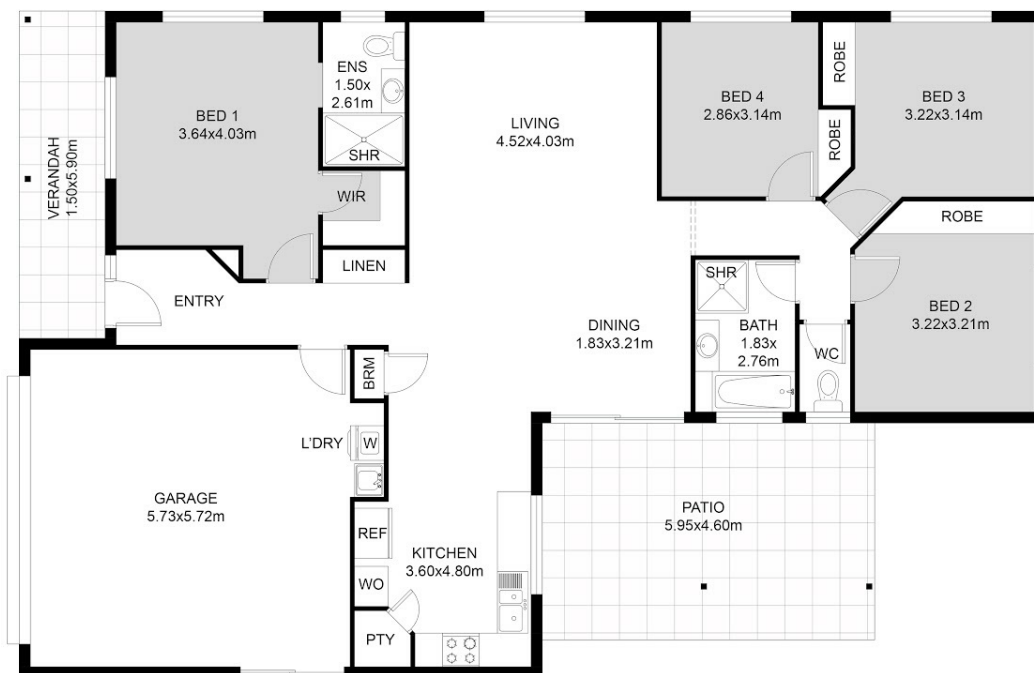
4 BED | 2 BATH | 2 CAR

PRICE:
UNDER CONTRACT

OPEN FOR INSPECTION:
N/A



Nicole Wheeler
0417508800
nicolewheeler@atrealty.com.au
www.atrealty.com.au



FLOOR PLAN

This floor plan including furniture, fixture measurements and dimensions are approximate and for illustrative purposes only. BoxBrownie.com gives no guarantee, warranty or representation as to the accuracy and layout. All enquiries must be directed to the agent, vendor or party representing this floor plan.

9 Bedford Court Durack

Disclaimer: Please note this floor plan is for marketing purposes and is to be used as a guide only. All dimensions are estimates only and may not be exact measurements.