

# FOR SALE

## TICK ALL THE BOXES !!!

This Stunning, Luxurious, Modern, Sophisticated - just some of the words that spring to mind the first time you enter 10 Beck Street! Finished to the highest standard by a quality builder, this stunning home has it all - a quiet location, stylish, sleek and all the space needed for a growing family.

The oversized modern kitchen is an absolute delight for the family chef, boasting a 5 burner gas cooktop, electric oven, dishwasher, oversized built-in pantry and more storage than you'll know what to do with.

Spacious open plan living is guaranteed in your new light and breezy living, dining and kitchen areas. The floor plan flows seamlessly to your spacious outdoor entertaining area, complete with expansive deck.

With a sophisticated finish throughout and all the upgrades that you would expect from a high-end builder, this luxurious home truly is a cut above the rest!

### Property Details:

- High Ceiling
- 3 large bedrooms with fans, blinds, built-in wardrobes and carpets
- 4th bedroom is at front can be used as an office or kids room.
- Beautiful master bedroom with large fitted-out built in robes and high-end ensuite.
- Luxurious & spacious kitchen, living, and dining areas, complete with multiple large windows to flood the home with natural light and invite the breeze
- Stunning kitchen with 5-burner gas cooktop, oven, large Built-in pantry, soft close drawers, plumbed-in fridge space, ceiling fans, beautiful splash-back and plenty of storage cupboards
- Two spacious living areas with plenty of room for the whole family
- Plantation Shutters in main lounge area
- NBN connection
- Front Render walls
- Carpet in all rooms and Vinyl flooring in all other areas
- 6 Security Camera with active live internal Screen

4 BED | 2 BATH | 2 CAR

### PRICE:

UNDER CONTRACT SUBJECT TO CONDITIONS !

### OPEN FOR INSPECTION:

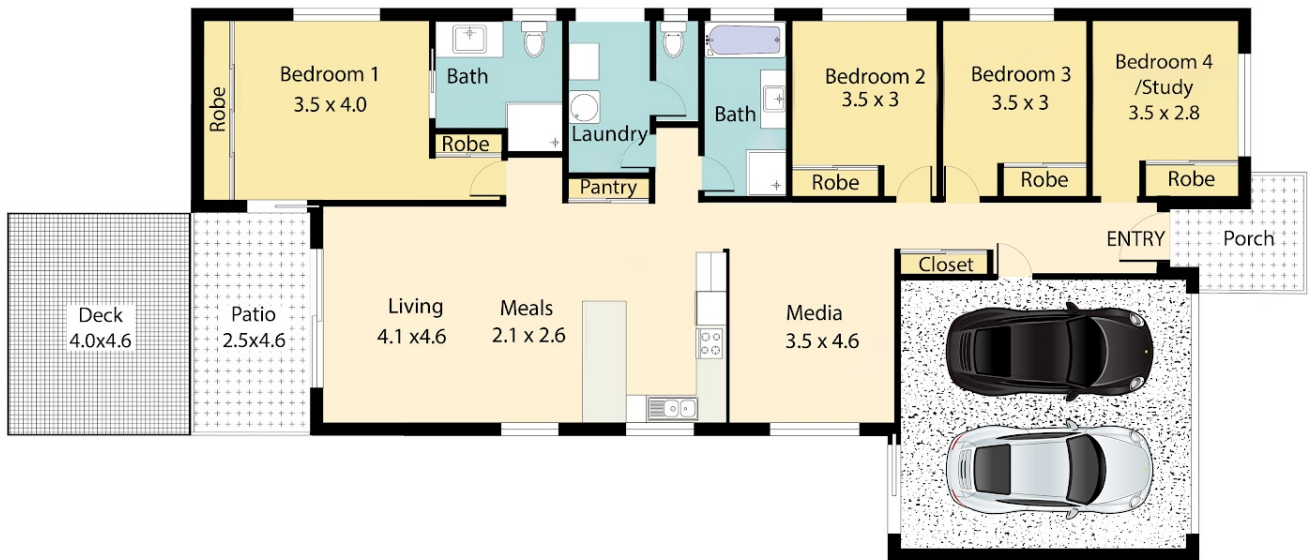
N/A



**Niket Kalra**  
**0412345000**

niket.kalra@atrealty.com.au

[www.atrealty.com.au](http://www.atrealty.com.au)



## 10 Beck St, Park Ridge

TOTAL APPROX FLOOR AREA: 210m2

*Disclaimer: All measurements are approximate and not to scale.  
This floor plan is strictly for marketing and illustration purposes  
only. Interested parties should make their own enquiries.*

PRORREALTY VISUALS

Disclaimer: Please note this floor plan is for marketing purposes and is to be used as a guide only. All dimensions are estimates only and may not be exact measurements.