



SOLD

ALL OFFERS BY 14TH MARCH - THE BEST VALUE PROPERTY IN THE CAPE

Welcome to sustainable living luxury in Cape Paterson. This stunning and extremely spacious home has been designed to maximise natural elements to ensure year-round energy efficiency and thermal performance with a 7.6 star energy rating. It features expansive north-facing open-plan living with polished concrete flooring with commercial grade low e double glazed floor to ceiling windows, while beautiful feature brick feature walls blend perfectly with the neutral colour palette.

Closing date sale - all offers by 14th March - For more info: www.5spinifex.com

The stylish kitchen features 2" stone bench tops, built in dishwasher and an induction cooktop. Deep soft close drawers and cupboards offer plenty of storage while the large pantry keep your life clutter-free.

The home features four large bedrooms all with BIRs and the master with a spacious ensuite and walk in wardrobe. The main bathroom is equally spacious with a large walk-in shower and custom stone-topped vanity.

Parking will not be a problem in the remote garage with extra high ceilings and laundry which houses the NBN & solar Inverter. This home has been beautifully finished and constructed by Arden Homes to an extremely high standard - why wait for build times when all the work has been done and is ready for you to move straight in and enjoy?

Here are just some of the things we love about this home:

- Haier Zoned Ducted Heating & Cooling
- Soaring 4m Entry
- Fisher & Paykel Appliances
- Natural Bluestone Tiles
- Black Pheonix Tapware
- Polished Concrete Floors
- Freestanding Tub
- Custom 2" Stone Bench tops

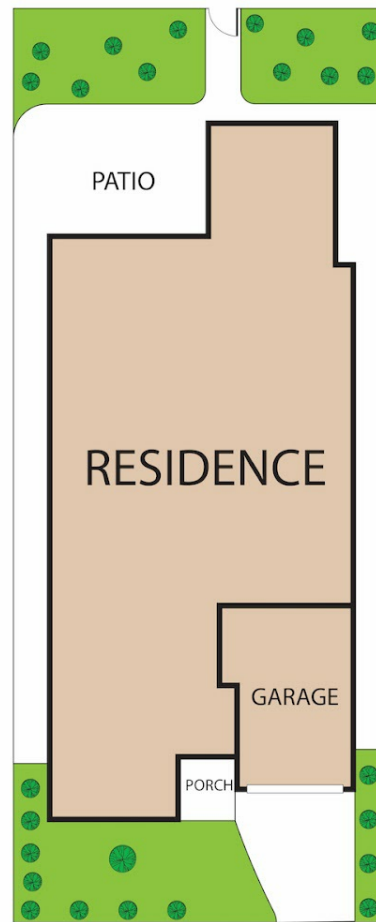
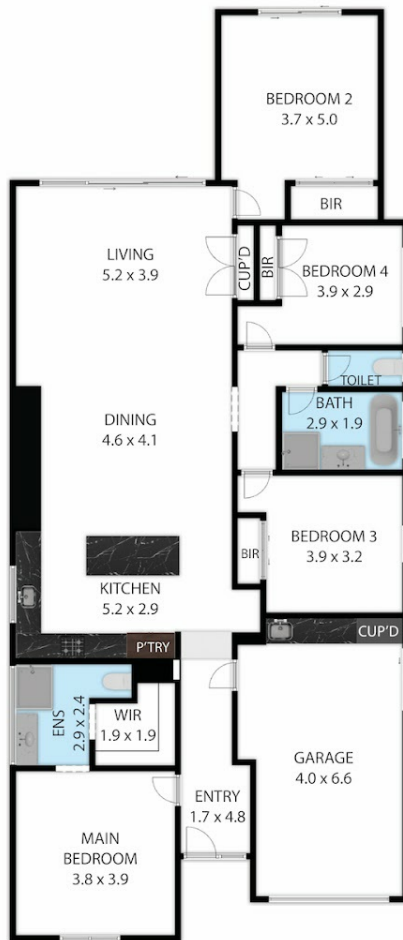
3 BED | 2 BATH | 2 CAR

PRICE:
\$825,000

OPEN FOR INSPECTION:
N/A



Leo Edwards
0472523445
leo@atrealty.com.au
www.atrealty.com.au



5 Spinifex Court, Cape Paterson 3995
 TOTAL APPROX. FLOOR AREA 174 SQ.M

Whilst every attempt has been made to ensure the accuracy of the floor plan contained here, measurements of doors, windows, rooms and any other items are approximate and no responsibility is taken for any error, omission, or misstatement. This plan is for illustrative purposes only and should be used as such by any prospective purchaser.



Disclaimer: Please note this floor plan is for marketing purposes and is to be used as a guide only. All dimensions are estimates only and may not be exact measurements.

Leo Edwards
 0472523445
 leo@atrealty.com.au
 www.atrealty.com.au

