

FOR SALE

SOLD FOR TOP DOLLAR! READY TO SELL? YOGI SHARMA IS JUST A CALL AWAY!

Introducing this unique townhouse, nestled in a sought-after gated community with minimal body corporate fees. It's a rare find, offering a perfect blend of quality construction and a secure lifestyle.

Experience the ideal mix of suburban serenity and incredible convenience in this charming home situated in a tranquil complex. Ideal for first-time homebuyers or investors seeking a high ROI, this sturdy, modern brick townhouse provides easy access to amenities in one of the most sought-after, predominantly owner-occupied communities.

Upon entering through the main entrance, you will discover a spacious open-plan dining and living area with air conditioning, as well as a generous kitchen equipped with an electric cooktop and plenty of storage space. There is a separate laundry and toilet accessible through the garage downstairs. Additionally, the property includes a spacious backyard and extra storage space beneath the stairs.

Upstairs, there are two bedrooms. The master bedroom has two built-in wardrobes, while the second one also includes a built-in wardrobe. A modern bathroom with a bathtub, a separate shower screen, a separate upstairs toilet, and additional linen storage completes the second floor.

Quiet and Secure Complex:

This well-maintained complex, with its secure gated entrance and predominantly owner-occupied status, offers a serene living environment. It's the perfect blend of convenience and tranquillity, creating a peaceful haven for its residents.

Prime Location:

Convenience is at your doorstep with this property. Located steps away from Foodworks, bus stops, and just minutes from major roads like Compton Road, Kingston Road, and the motorways, everything you need is easily accessible. Quick access to the highway brings both Brisbane CBD and the Gold Coast within easy reach, making this property a gateway to endless possibilities.

2 BED | 1 BATH | 1 CAR

PRICE:

Sold for Top Dollar! Ready to Sell?
Call Yogi!

OPEN FOR INSPECTION:

N/A

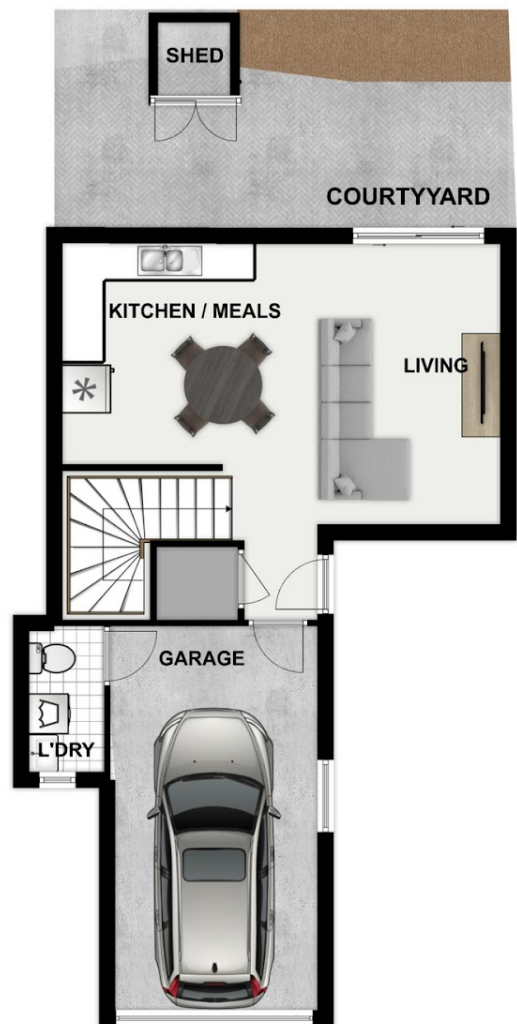
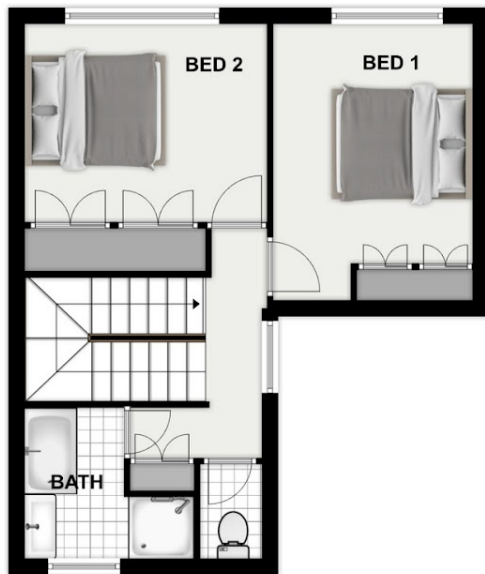


Yogi Sharma

0424836194

yogi.sharma@atrealty.com.au

www.atrealty.com.au



Disclaimer: Please note this floor plan is for marketing purposes and is to be used as a guide only. All dimensions are estimates only and may not be exact measurements.