

13 GRANTHAM CRESCENT, BERWICK,
VIC, 3806



SOLD

MAJESTIC FAMILY ENTERTAINER IN THE HEART OF BERWICK

5 | 4 | 2

This impressive two-storey family home boasts grand proportions and meticulous attention to detail, starting with its stately facade.

With approximately 40 squares of living space and 2.7m high ceilings, this residence offers: a palatial master bedroom complimented by a beautiful chic ensuite, large walk-in robe and magnificent views of Berwick, four remaining oversized bedrooms, plus a home-office and three large living zones. Three additional bathrooms, plus a sauna combined with a shower and powder room, servicing the Tuscan-style solar pool.

The granite kitchen is a chef's dream, featuring stainless steel appliances, a large breakfast bar and a walk-in pantry, adjoining the light-filled family and dining areas. The conservatory-style meals area overlooks heated swimming pool and covered outdoor entertaining with a wood-fire pizza oven built by a professional stonemason, all of which is surrounded by beautifully landscaped gardens with exotic plants and fruit trees.

Additional highlights include: Sandstone paving, Gas ducted heating, Evaporative cooling, Security system, Double garage with internal entry, Two water tanks and Solar panels.

PRICE: \$1,480,000

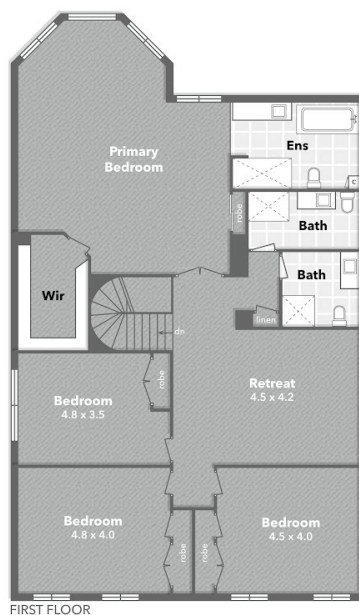
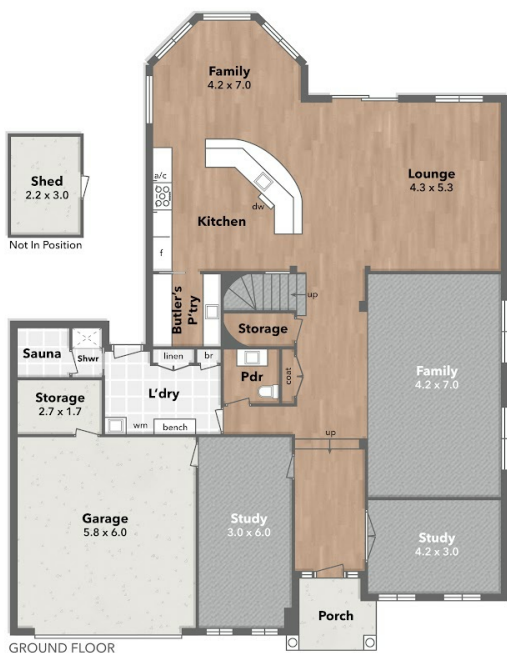
OPEN FOR INSPECTION: N/A .

Emily Grainger | 0421929013 | emily@grealestate.com.au | www.grealestate.com.au

13 GRANTHAM CRESCENT, BERWICK, VIC, 3806

13 Grantham Crescent, Berwick

 4 Bedroom  4 Bathroom  2 Car Garage



Disclaimer: Whilst every effort has been made to ensure the accuracy of these particulars, no warranty is given by the vendor or the agent as to their accuracy. Interested parties should not rely on these particulars as representations of fact but must instead satisfy themselves by inspection or otherwise.