



FOR SALE

TAKING LUXURY RESORT-STYLE LIVING TO NEW HEIGHTS

Welcome to 42 Bristlebird Drive, where contemporary sophistication meets modern elegance in the Illawarra's premier estate, Calderwood Valley. This unbelievable family home has all your aspirations covered, with a gorgeous light-filled design, high ceilings throughout and elevated mountain views plus the biggest garage you have ever seen!

Featuring great sized bedrooms with built in robes, the master suite boasts his & hers robes a designer ensuite and automated blinds. The elegant main bathroom boasts beautiful gold tapware and a free-standing bathtub with floor to ceiling tiles. Modern engineered flooring and ducted air-conditioning adorn the expansive main living area with a high gable roof that extends out to the beautiful front balcony and really gives you feeling of space and calm. You also have a fireplace for those cozy winter movie nights. They say the kitchen is the heart of the home, and this one is no exception! The most amazing marble island bench plays host to a Poly-tech kitchen with state-of-the-art gold fixtures and overlooks the open plan dining and family room which adjoins the outdoor entertaining and backyard oasis with in-ground pool and Travertine pavers.

The entry level is designed with functionality in mind, with its own bedroom with built in robe, private bathroom and extra living room, perfect for guest accommodation or teenagers retreat. Internal access is also provided to the expansive garage with enough space for 5 cars and workshop space. You are also spoilt by extra-high ceilings and epoxy flooring throughout. A unique, family home that truly has something everyone! You honestly will not find another like it in the Illawarra. Don't miss this rare and exciting opportunity. Phone Peter Bullman today and find why you will love it as much as we do.

4 BED | 3 BATH | 5 CAR

PRICE:

Contact Agent

OPEN FOR INSPECTION:

N/A

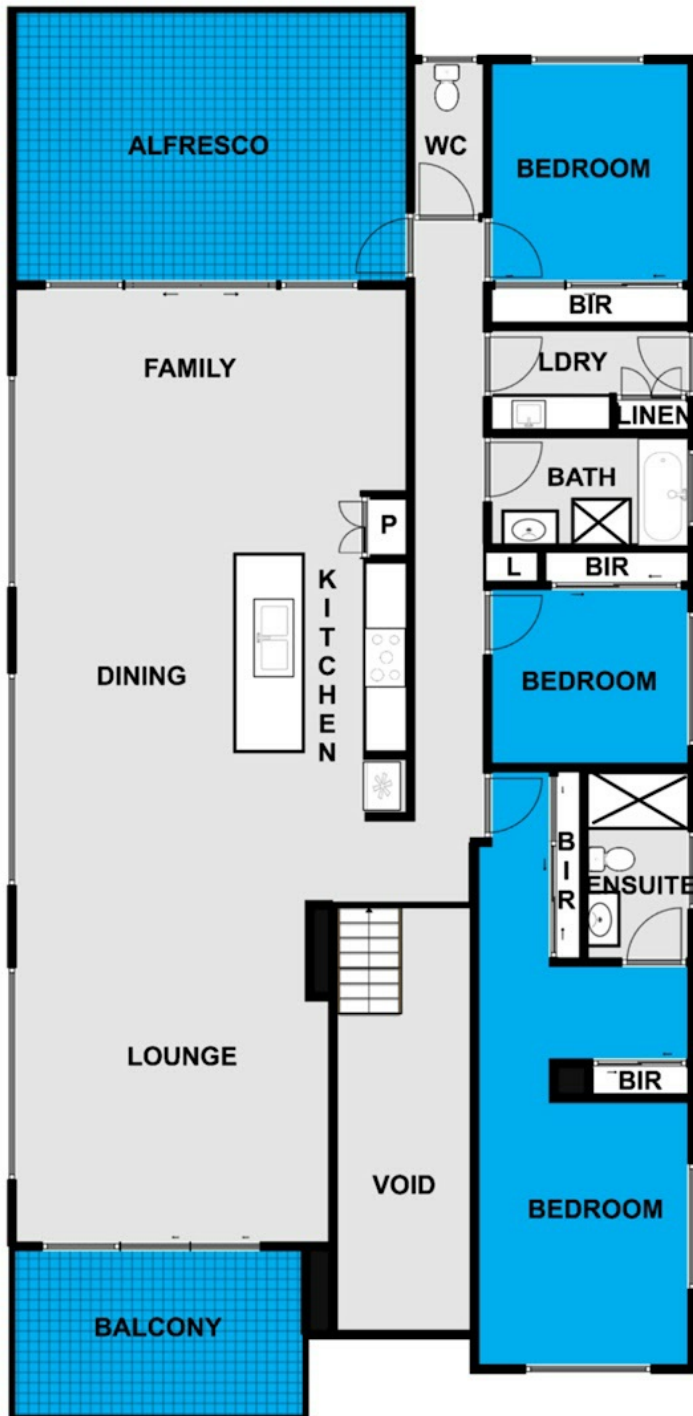


Peter Bullman

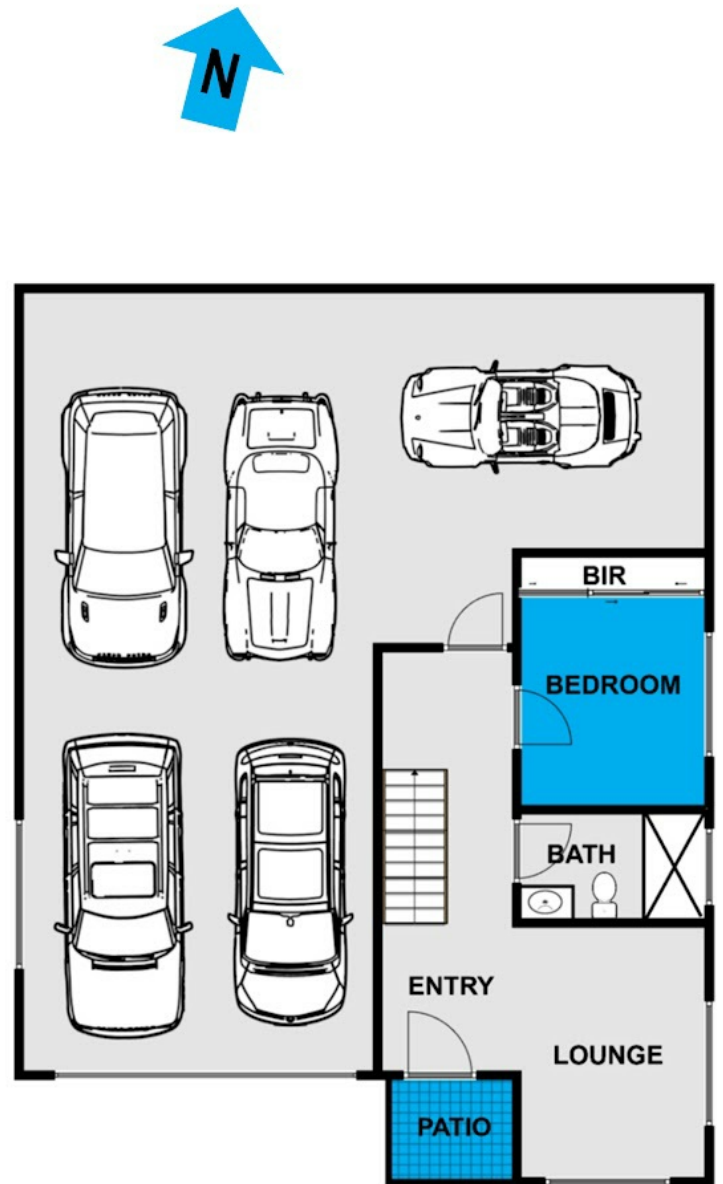
0401394394

peterb@atrealty.com.au

www.atrealty.com.au



FIRST FLOOR



GROUND FLOOR

Disclaimer: Please note this floor plan is for marketing purposes and is to be used as a guide only. All dimensions are estimates only and may not be exact measurements.

This floor plan including furniture, fixture measurements and dimensions are approximate and for illustrative purposes only.
@Realty gives no guarantee, warranty or representation as to the accuracy and layout.
All enquiries must be directed to the agent, vendor or party representing this floor plan.