



**SOLD**

## SENSATIONAL VALUE! ON-SITE AUCTION, UNLESS SOLD PRIOR!

Auction, Saturday 07/08/2024 2.30pm. Settlement 30/60 days negotiable.  
Turnkey family home / townhouse, comprising 3 beds, 2 baths, 3 toilets, 2 cars.

### The Location;

Ideally situated across the road from Antonio Park Playground and Picnic area with an easy walk to Heatherdale and/or Mitcham Train Station. This home is only minutes commute to Mitcham Central Shopping Hub, local schools including Rangeview Primary and Mullauna Secondary College, Eastland, Ringwood Central and the Eastlink Freeway making life easy and convenient

### Features Include;

Spacious luxurious kitchen with stone benchtops and stainless-steel appliances.  
Open plan split level living with the breakfast bar overlooking the meals/dining and lounge/living area.  
Offering Floor to ceiling windows with nature light and an easy ebb and flow to the outdoor BBQ terrace area.  
The large and spacious master bedroom features a full ensuite with walk-in robe.  
The upstairs offers 2 generous bedrooms complete with built-in robes and a sparkling family bathroom with spa bath and separate powder room toilet.

### Other Features include;

3 X split system heating and colling units, quality fixtures and fittings, carpet to bedrooms, tiles to wet areas, engineered timber floors to living areas, several linen presses and cupboards, under stairs storage, double garage with internal entry, remote garage door, established gardens and so much more.

Body corporate fees approx. \$2,100 PA includes, building insurance, common liability insurance and management. Hurry, An inspection will Impress!

Thinking of selling now or in the future? For a free-market appraisal Call SMS or email - Lou Rinnovasi 0417-166-668 [lou@atrealty.com.au](mailto:lou@atrealty.com.au) or Luciano Marcuzzi 0423 181 161 [Luciano@atrealty.com.au](mailto:Luciano@atrealty.com.au) for all other inquiries please call or email the agent.

Inspection times and property availability are subject to change without notice. Photo

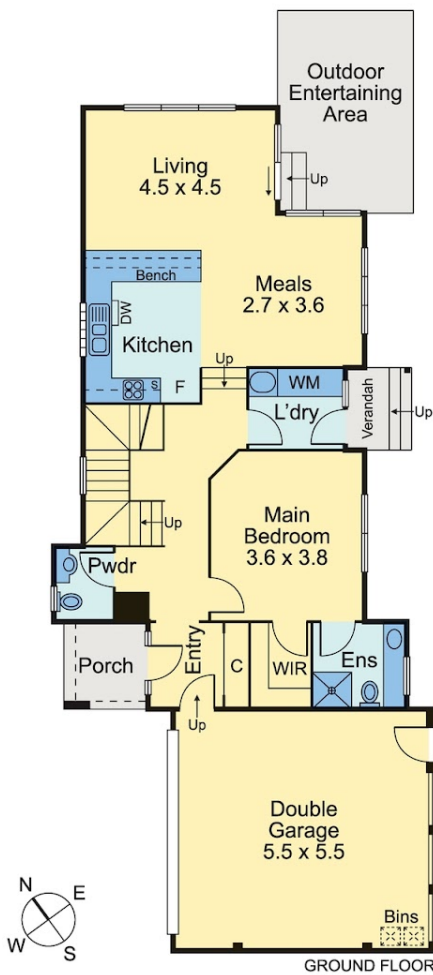
**3 BED | 2 BATH | 2 CAR**

**PRICE:**  
**\$943,000**

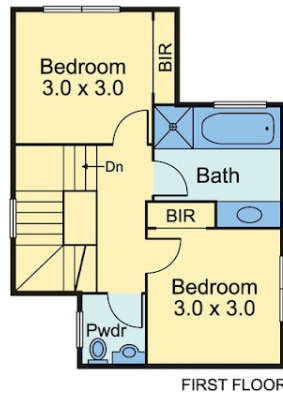
**OPEN FOR INSPECTION:**  
**N/A**



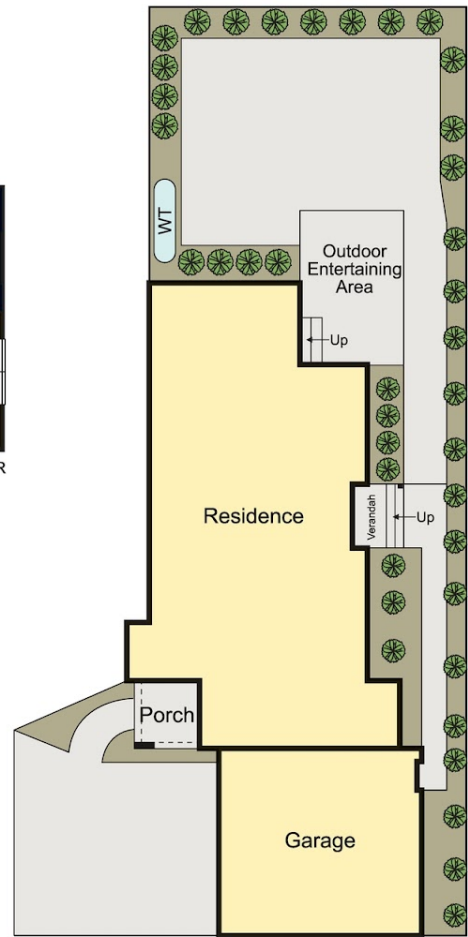
**Lou Rinnovasi**  
**0417166668**  
[lou@atrealty.com.au](mailto:lou@atrealty.com.au)  
[www.atrealty.com.au](http://www.atrealty.com.au)



GROUND FLOOR



FIRST FLOOR



Every care has been taken to verify the accuracy of the details and dimensions in this property plan. Prospective purchasers are advised to make their own enquiries to satisfy themselves in all respects. The plan is a representation only and is not necessarily to scale.

Disclaimer: Please note this floor plan is for marketing purposes and is to be used as a guide only. All dimensions are estimates only and may not be exact measurements.