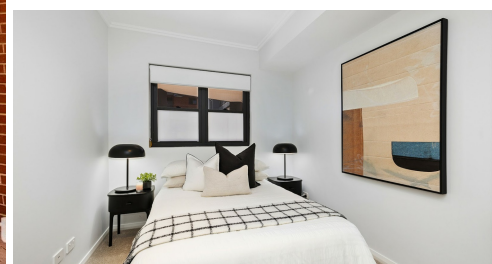
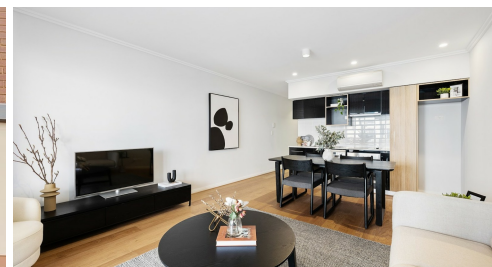


105/80 OLD PERTH ROAD BASSENDEAN



## FOR SALE

### LUXURY, LOCATION & LIFESTYLE!

#### UNDER OFFER!

Perfectly positioned townside location, the Whitfield Building epitomizes quality and design, tastefully combined to become one of Bassendean's iconic landmarks.

Inspired by the town's heritage yet built for the future, it stands as a cornerstone of Bassendean's ongoing revitalization.

Built in 2016 and recently updated with fresh paint, new carpet, timber flooring, and roller blinds, this generous 61sqm, 1brm x 1bth apartment features contemporary designer finishes and lock-and-leave convenience in a highly sought-after suburb.

A short stroll to cafes, restaurants, the Swan River, Bassendean Hotel & wine bar, beautiful parks & Sandy Beach, transport links, fitness centres, medical facilities, and the renovated Bassendean shopping centre.

Close to the airport, Perth CBD, major arterial roads, and just over the bridge from historic Guildford and the gateway to the stunning Swan Valley.

Whether you're a first home buyer, investor, or retiree, this stylish and spacious architect-designed apartment is perfect for you.

#### Features include:

- \* 61sqm living space
- \* Generous balcony
- \* Reverse cycle A/C
- \* Brand new timber floors
- \* Designer kitchen and bathroom
- \* Bosch stainless steel appliances
- \* Caesarstone bench-tops
- \* Caroma tapware
- \* Ample storage
- \* Freshly painted throughout
- \* Brand new plush carpet
- \* Built-in wardrobe
- \* Linen closet
- \* Clothes dryer
- \* LED lighting
- \* Brand new roller blinds
- \* High ceilings, cornices, and skirting boards
- \* Individually allocated 5sqm storage room

1 BED | 1 BATH | 1 CAR

#### PRICE:

From \$329,000

#### OPEN FOR INSPECTION:

N/A



**Louise Neal**

**0423422721**

[louiseneal@atrealty.com.au](mailto:louiseneal@atrealty.com.au)

[www.atrealty.com.au](http://www.atrealty.com.au)



Disclaimer: Please note this floor plan is for marketing purposes and is to be used as a guide only. All dimensions are estimates only and may not be exact measurements.

