

FOR SALE

"CORAL HOMES BUILD" LARGE 5 BEDROOM HOME IN THE HEART OF PARK RIDGE !!

Property details at a glance:

- Built by Coral Homes in 2023
- Large 310 m2 home on a massive 713 m² block
- Big Space for pool with side access

Situated in the heart of Park Ridge, the future owner of 142 Beck Street will have everything they need quite literally at their doorstep! All the Park Ridge infrastructure - including schools, multiple parklands and a new Logan Reserve Shopping Village shopping centre, gym - are only a stone's throw away and are all within easy walking distance. Forget the stress of building and take advantage of this luxurious home with plenty of room for the whole family to enjoy.

Spacious and open-plan living is guaranteed in your new light and breezy living, dining and kitchen areas which flow seamlessly from the indoors to the outdoors. For the chef of the home, the oversized modern kitchen is an absolute dream, boasting an upgraded Caesarstone island bench-top, 5 burner gas cooktop, 90cm oven, generous walk-in pantry and more storage than you'll know what to do with.

With multiple separate living areas, a beautiful outdoor alfresco and a big back yard, there is plenty of space for everyone to spread out, unwind and relax!

Property Features:

- 5 Bed, 3 Living, 2 Bath, 2 Powder Room (1 Downstairs)
- Exceptional location directly opposite the highly popular and recently completed Logan Reserve shopping village
- Light and spacious kitchen, living, and dining areas, complete with multiple large windows to flood the home with natural light and invite the breeze
- Fantastic kitchen with upgraded Caesarstone benchtops, 5-burner gas cooktop, 90cm oven, large walk-in pantry, soft-close drawers and plenty of storage cupboards

5 BED | 2 BATH | 2 CAR

PRICE:

YOUR DREAM HOME 2023 BUILT !!

OPEN FOR INSPECTION:

N/A



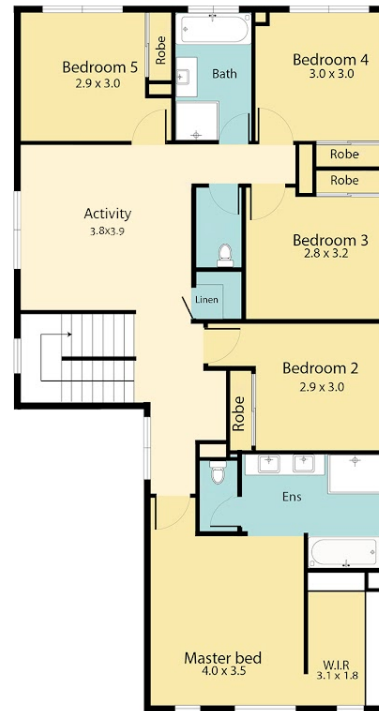
Niket Kalra
0412345000

niket.kalra@atrealty.com.au

www.atrealty.com.au



Ground Floor



First Floor

142 Beck Street, Park Ridge

TOTAL APPROX FLOOR AREA: 310m²

*Disclaimer: All measurements are approximate and not to scale.
 This floor plan is strictly for marketing and illustration purposes
 only. Interested parties should make their own enquiries.*

PROREALTY VISUALS

Disclaimer: Please note this floor plan is for marketing purposes and is to be used as a guide only. All dimensions are estimates only and may not be exact measurements.