



SOLD

A RELAXED FAMILY LIFESTYLE AWAITS AT RIVERSTONE RISE ESTATE

Step into this beautiful near-new 4-bedroom home in the heart of Riverstone Rise and experience the perfect blend of coastal and country living. Perfect for first-time buyers or savvy investors, this property offers a blend of modern living with a relaxed, family-friendly atmosphere, only metres from parkland with walking trails and abundant wildlife.

The estate is a haven for families, with picturesque pathways, playgrounds, and seating and barbeque areas ideal for leisurely strolls and outdoor relaxation. With a childcare centre and convenient school bus pick-up to local schools, your daily routine is made easy.

You'll be just a short drive away from the stunning beaches of Tannum Sands, the Boyne Island boat ramp, the Kirkwood Shopping Centre, and Gladstone, ensuring you're never far from what you need. This home is also ideal for anyone who needs to travel, with easy access to the Bruce Highway just a few minutes away.

Features Include:

4 Spacious Bedrooms: All carpeted with ceiling fans and built-in robes, including a master suite with air conditioning, a walk-in robe, and an ensuite.

Open Plan Living: Tiled living areas that are both air-conditioned and fitted with ceiling fans, providing a comfortable space for family gatherings. Undisturbed views to the forested ridges.

Modern Kitchen: Equipped with stainless steel appliances, a dishwasher, smart stone benchtops, and a pantry, making meal prep a breeze.

Family-Friendly Bathrooms: Main bathroom features a bath, shower, vanity, and a separate toilet.

Double Lock-Up Garage: Remote-controlled with internal access for added convenience. Plus, there's a brand new zincalume 4.5x3.0x2.0 workshop style garden shed.

Outdoor Living: Step out to an undercover patio area through glass sliding doors, perfect for

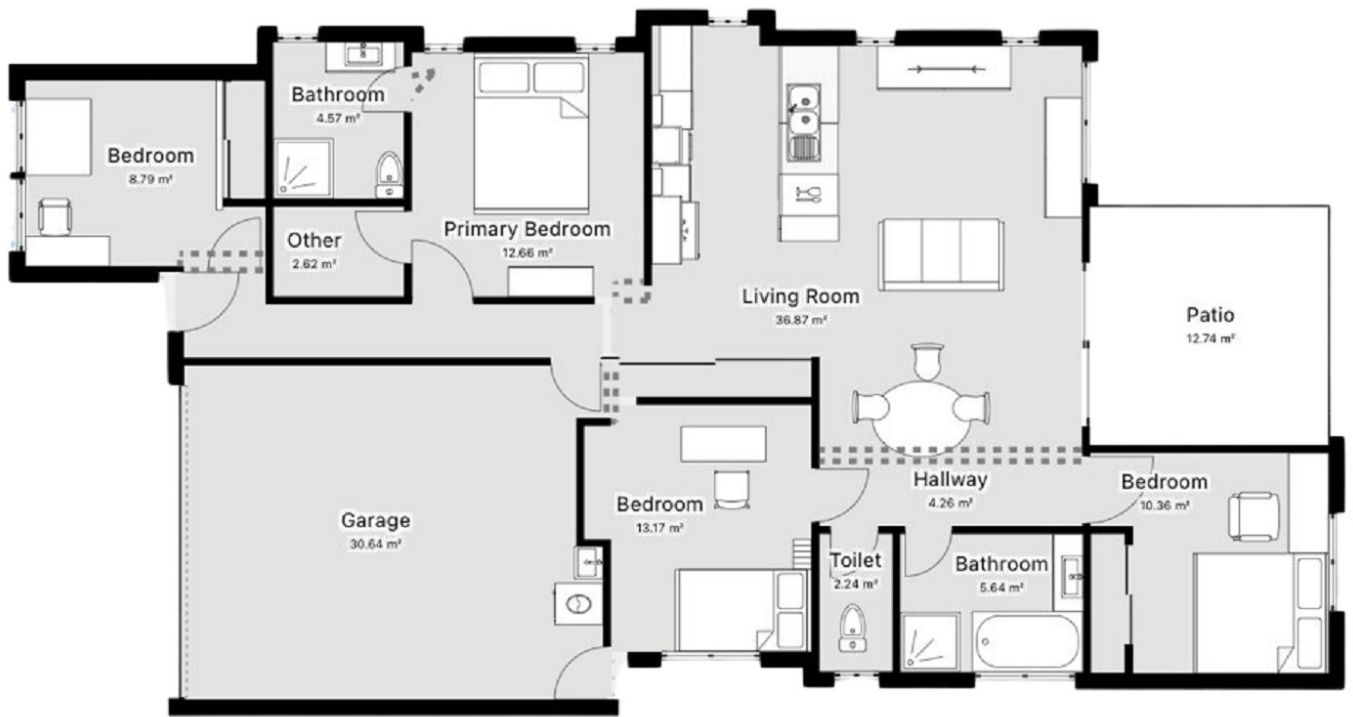
4 BED | 2 BATH | 2 CAR

PRICE:
\$522,000

OPEN FOR INSPECTION:
N/A



Julian Gregson
0421577537
julian.gregson@atrealty.com.au
www.juliangregson.com.au



Floorplan: 29 Koolivoo Parade, Boyne Island QLD 4680

Total internal area: 143m²

Disclaimer: Please note this floor plan is for marketing purposes and is to be used as a guide only. All dimensions are estimates only and may not be exact measurements.