

SOLD

OUTSTANDING LOCATION V-WALL NAMBUCCA HEADS

Coastal Living at Its Finest in Ingenia Holidays White Albatross

Wake up to paradise every day with this unique opportunity to own an elevated, move-in-ready two-bedroom home at Ingenia Holidays White Albatross, Nambucca Heads.

Modern & Light-Filled Home

Step into a beautifully designed retreat that exudes modern coastal charm. The open-plan living space is bathed in natural light, highlighted by a sophisticated neutral color palette, stylish feature wall paneling, and sleek modern lighting. The contemporary glass-panelled deck is an entertainer's dream, offering the perfect spot to enjoy refreshing coastal breezes while taking in the stunning views.

Stylish & Functional Kitchen

Cooking becomes a pleasure in this well-appointed kitchen, designed with a chef's needs in mind. Featuring elegant subway tiling, generous storage, and an electric cooktop, this kitchen blends both form and function seamlessly.

Comfort & Convenience in Every Room

Both carpeted bedrooms are designed for relaxation, with the master bedroom offering built-in storage, a ceiling fan, and chic bedside lighting. The elevated position of the home allows natural light to flow in from well-positioned windows, creating a welcoming ambiance throughout. The bathroom boasts a sleek monochrome design, with a walk-in shower and sophisticated black tapware for a touch of luxury.

Massive Multi-Purpose Carport with Added Amenities

One of the standout features of this property is the impressive 50m² undercover enclosed carport. Well-lit and fully powered, it offers ample space for vehicles, boats, trailers, or additional storage. This area also includes convenient laundry facilities, making it the perfect multifunctional

2 BED | 1 BATH | 2 CAR

PRICE:
\$375,000

OPEN FOR INSPECTION:
N/A

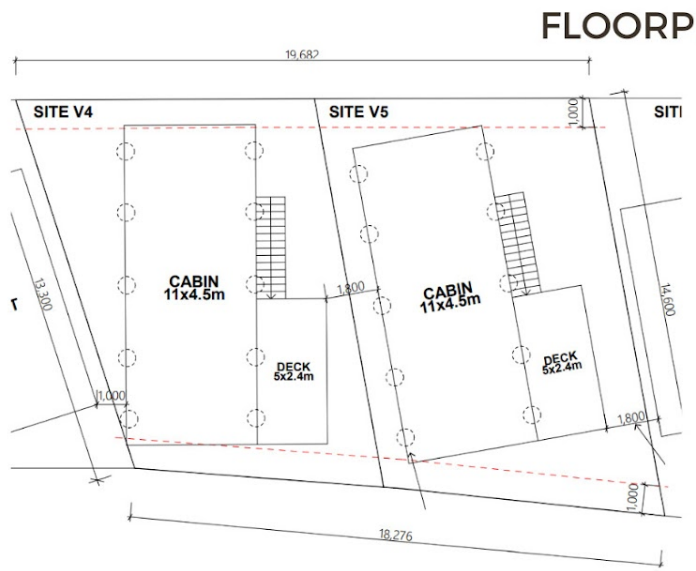
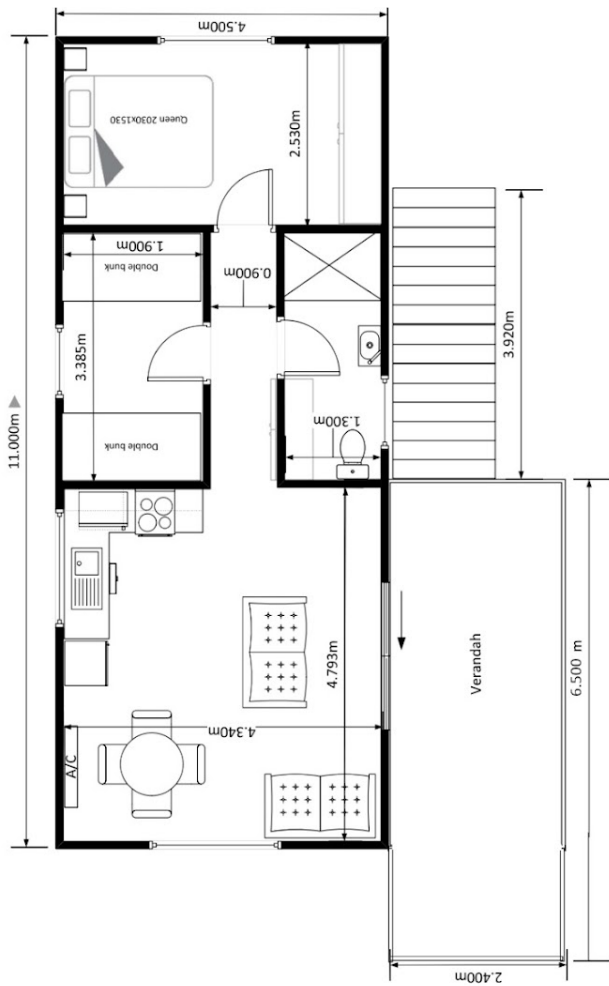


Simon McPherson

0432073130

simonmcpherson@atrealty.com.au

www.atrealty.com.au



SIMON
MCPHERSON

V5/52 Wellington Drive, Nambucca Heads, NSW, 2448. @realty

Disclaimer: Please note this floor plan is for marketing purposes and is to be used as a guide only. All dimensions are estimates only and may not be exact measurements.

Simon McPherson
0432073130
simonmcperson@atrealty.com.au
www.atrealty.com.au

@realty