



# FOR SALE

## PRIVATE OASIS CLOSE TO SCHOOLS AND TRANSPORT

Set on an 878 sqm block, offering both space and privacy, this special family home is ideally located within walking distance of transport, schools and many amenities as well as The Gap village shopping centre. The entertaining pergola with its beautiful timber decks overlooks a sparkling inground pool with solar heating, taking full advantage of the beautiful Queensland weather all year around. The manicured lawns and lovely garden further enhance the resort like ambiance of this very special property.

Main Level consists of -

- \* Open plan living with large windows and plenty of light.
- \* Combined lounge, dining and kitchen leading to back deck.
- \* 3 Bedrooms all with build ins / Fans / Air cons.
- \* Family bathroom.
- \* Reverse cycle air conditioning and fans in all rooms.
- \* Polished timber floors throughout.
- \* Internal solid timber staircase leading to lower level.

Lower Level consists of -

- \* Living area leading to outdoor entertainment area and pool.
- \* Two office spaces.
- \* Family bathroom.
- \* Laundry room with kitchenette.
- \* Utility room currently used as a Lounge with office space and air conditioning.
- \* Utility room currently used as dedicated office with air conditioning.
- \* Utility room currently used as a bedroom with built-ins and air conditioning.

Whether you are dining on the back deck, relaxing by the pool or enjoying the garden, this home offers a wonderful blend of indoor comfort and outdoor living, creating a sense of peace and tranquility where going home is something you look forward to.

3 BED | 2 BATH | 2 CAR

PRICE:

For Sale by Negotiation

OPEN FOR INSPECTION:

N/A



**Trish Holliday**

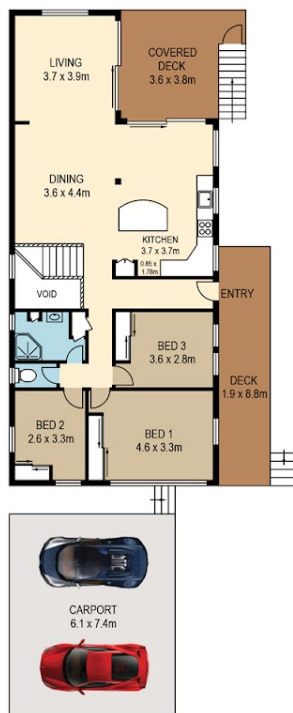
**0411825808**

trish@atrealty.com.au

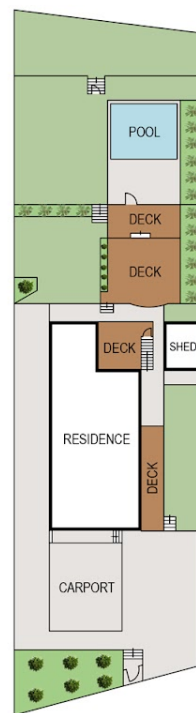
[www.atrealty.com.au](http://www.atrealty.com.au)



LOWER LEVEL



UPPER LEVEL



SITE MAP  
(NOT TO SCALE BELOW)



PLANS SHOWN ONLY INDICATIVE OF LAYOUT. DIMENSIONS ARE APPROXIMATE.  
All information contained herein is gathered from sources we believe to be reliable.  
However we cannot guarantee its accuracy and interested persons should rely on their own enquiries.

internal 227sqm  
external 125sqm  
total 352sqm



47 BROMWICH STREET

Created by RealScope®  
www.realscope.com.au

Disclaimer: Please note this floor plan is for marketing purposes and is to be used as a guide only. All dimensions are estimates only and may not be exact measurements.