



SOLD

MODERN, CONTEMPORARY AND CONVENIENCE GALORE, AVAILABLE NOW

Welcome to 65 Hance Road, Howrah, exuding contemporary features this stunning home offers convenience galore situated in a quiet and friendly neighborhood, this house is the perfect blend of modern luxury and comfortable living. With 3 bedrooms, 2 bathrooms, 2 car parks, and an ensuite, this house has everything you need to live comfortably and in style all wrapped up in a low maintenance and well landscaped package.

Located 4 minutes walk to the brand new Glebe Hill shopping centre, 5 minutes from Shoreline shopping centre and a short 15 minute commute to the Hobart CBD a more convenient location would be hard to find with multiple parks, restaurants, supermarkets all on your doorstep.

As you step through the front door, you will be greeted by a spacious and open floor plan, designed to maximize natural light and create a warm and inviting atmosphere. The floorboards throughout the house add a touch of elegance and complement the modern design. The living area is equipped with reverse cycle air conditioning, ensuring that you and your family are comfortable all year round, no matter the weather.

The kitchen is a chef's dream, featuring high-end appliances and joinery, stone benchtops with induction cooktop and plenty of storage space. The open plan design allows for easy entertaining, and the breakfast bar is the perfect spot for a quick morning coffee.

The bedrooms are spacious with master bedroom offering a huge walk in robe and generous ensuite, bedrooms two and three with built-in wardrobes, providing ample storage for all your belongings. A bonus study nook along the hallway also serves as the communications hub with the home fully networked with cat5 cabling to bedrooms and television locations.

But that's not all, step outside onto the deck, and you will be blown away by the outdoor entertainment area. Perfect for hosting barbeques with family and friends or simply relaxing and enjoying the beautiful Tasmanian weather. The fully fenced backyard offers privacy and security, making it the perfect place for children and pets to play.

The house is on a generous block of land, with a size of 509 square meters. There is plenty of room for the kids to run around, and a shed for all your storage needs.

This home is currently vacant, meaning you can move in straight away and make it your own.

Forget about paying rent, this could be your forever home. Don't wait any longer, take the first step towards living your best life and make this house your own.

Don't miss out on the opportunity to own this stunning property in the new homes area of Howrah. With its modern features and unbeatable location, this house won't stay on the market

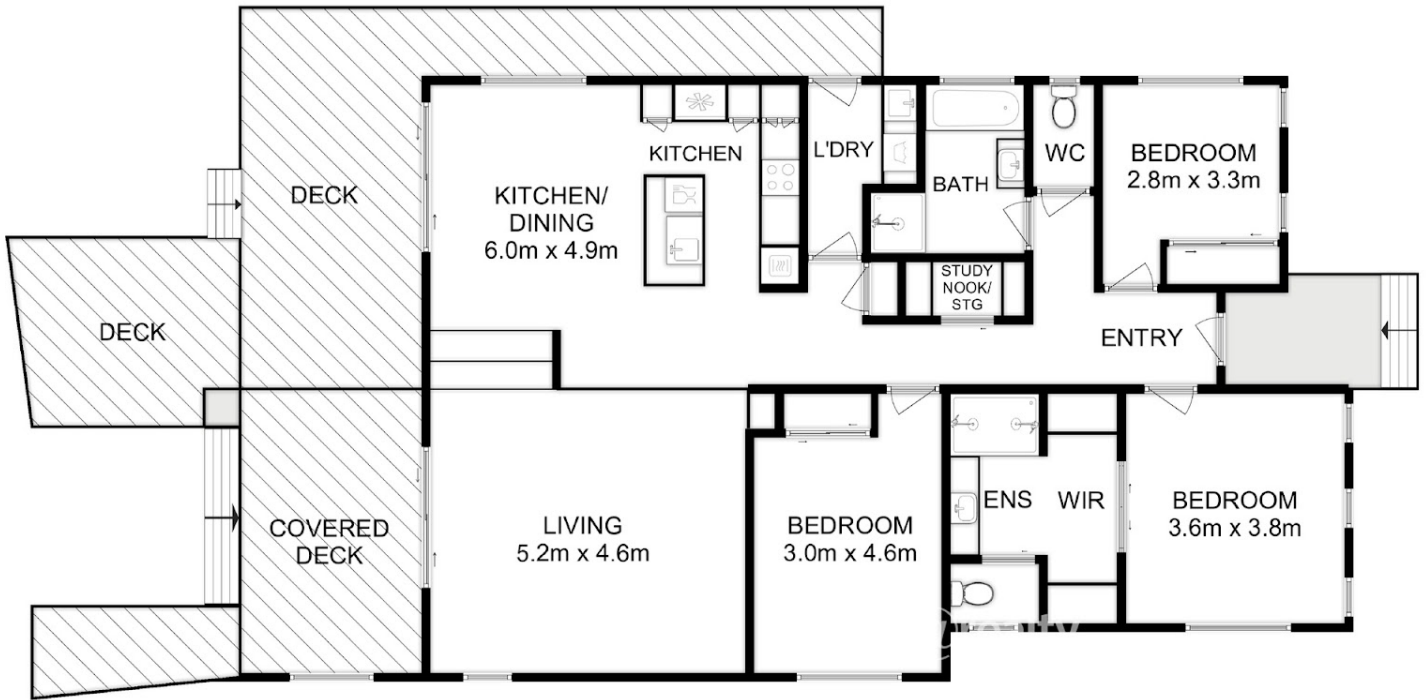
3 BED | 2 BATH | 2 CAR

PRICE:
\$703,000

OPEN FOR INSPECTION:
N/A



Ben Palmer
0417556731
benpalmer@atrealty.com.au
hobarthomes.com.au



Total Approx. Floor Area : 142 sqm
Total Approx. Deck Area : 56 sqm
Total Approx. Usable Area : 198 sqm



All measurements are internal and approximate.
This plan is a sketch for illustration, not valuation.
Produced by Open2view.com

Disclaimer: Please note this floor plan is for marketing purposes and is to be used as a guide only. All dimensions are estimates only and may not be exact measurements.