

# FOR SALE

## STUNNING BRAND NEW CONTEMPORARY TOWNHOUSE - CENTRAL LOCATION - UNSURPASSED WORKMANSHIP

This stunning brand new contemporary townhouse offers a sleek, modern design with Tas Oak features and premium finishes throughout making a perfect home for those looking for a luxurious retreat in a picturesque setting. This architecturally designed home with open living space features expansive windows offering a sunny but private outlook, while the stunning kitchen is equipped with top-of-the-line appliances, butlers pantry and a spacious stone island bench for cooking and entertaining. The master suite is a true oasis, with classy fully tiled ensuite bathroom with underfloor heating and a view to the east making the best of the morning sun. Bedrooms 2 and 3 are generously sized with built-ins and the second "hotel style" bathroom provides plenty of space and features floor heating and floor to ceiling tiles. Outside, the expansive upper level deck is perfect for enjoying the morning and afternoon sun and stunning north easterly aspect across the neighbouring hills. The property also boasts beautifully landscaped gardens and lawns all designed for low maintenance living. Don't miss the opportunity to own this contemporary masterpiece in a serene setting whilst offering convenience to Hobart, Eastern Shore shops, Beaches, Schools and Services. Contact us today to schedule a viewing and experience the beauty of this home for yourself.

This stunning brand new home features

- One off thoughtful architectural design handcrafted by "South East Building"

- 6+ star energy rating
- Premium appliances
- floor heated tiled bathrooms
- Solid Tasmanian Oak flooring
- Tas Oak features throughout
- Parking for 3+ cars
- Sunny and private

3 BED | 2 BATH | 1 CAR

### PRICE:

Offers over \$785,000

### OPEN FOR INSPECTION:

N/A



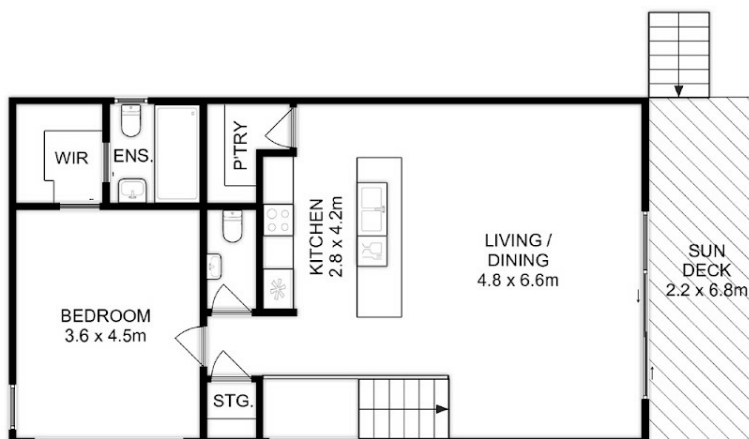
**Ben Palmer**

**0417556731**

[benpalmer@atrealty.com.au](mailto:benpalmer@atrealty.com.au)

[hobarthomes.com.au](http://hobarthomes.com.au)

UPPER LEVEL



Total Approx. Floor Area : 159 sqm  
(Including Garage)

All measurements are internal and approximate.  
This plan is a sketch for illustration, not valuation.  
Produced by Open2view.com

Disclaimer: Please note this floor plan is for marketing purposes and is to be used as a guide only. All dimensions are estimates only and may not be exact measurements.