



## FOR SALE

**ASTOUNDING 16 HECTARES /41 ACRES  
PROPERTY MADE IN HEAVEN- LOCATION,  
ACCESS, FENCED, POWER, WATER OPTIONS-  
RARE GEM \$395K**

ASTOUNDING 16 HECTARES /41 ACRES PROPERTY MADE IN HEAVEN- LOCATION,  
ACCESS, FENCED, POWER, WATER OPTIONS- A RARE GEM JUST \$395,000.

This exceptional property spans 16.85 hectares (41.6 acres) of prime, pristine, and fertile land, offering a unique opportunity to own a slice of paradise with endless potential. Nestled within a high aspect, frost-free zone, the land boasts panoramic, uninterrupted views of rolling hills and the majestic Misty Mountain National Park, with its lush rainforest, providing an idyllic backdrop for any venture.

TWO PERMANENT CREEKS, A 54 MEGALITRE WATER LICENSE, AND 17 ACRES OF  
MAINS AND SUB MAINS IRRIGATION PIPES THAT WAS ORIGINALLY USED FOR  
BANANAS.

The property is perfectly suited for those seeking to establish a farm, hobby farm, or grazing operation, thanks to its rich volcanic soil and high rainfall, ensuring a lush growing season all year round. The land is fully fenced and offers easy access, making it ideal for various uses, whether you're looking to create a secluded hideaway, holiday escape, or even a boutique resort.

Water will never be a concern, with unlimited options available from both above and below ground sources, ensuring a reliable supply. Mains power is conveniently located at the boundary, simplifying any development plans. The property is also blessed with beautiful tropical breezes that further enhance the serene environment.

Despite its peaceful and secluded setting, this property is conveniently located just 90 minutes from the Cairns CBD, 60 minutes from the Atherton Tablelands, and only 25 minutes from the Innisfail CBD, offering the perfect balance between tranquility and accessibility.

With rates at \$2100 per half-year, this property is truly a rare gem in a class of its own, combining an unparalleled location, quality, and serenity. Don't miss the opportunity to make this

**0 BED | 0 BATH | 0 CAR**

**PRICE:**

**41 ACRES FENCED, PWER,  
WATER OPTIONS-\$395K**

**OPEN FOR INSPECTION:**

**N/A**

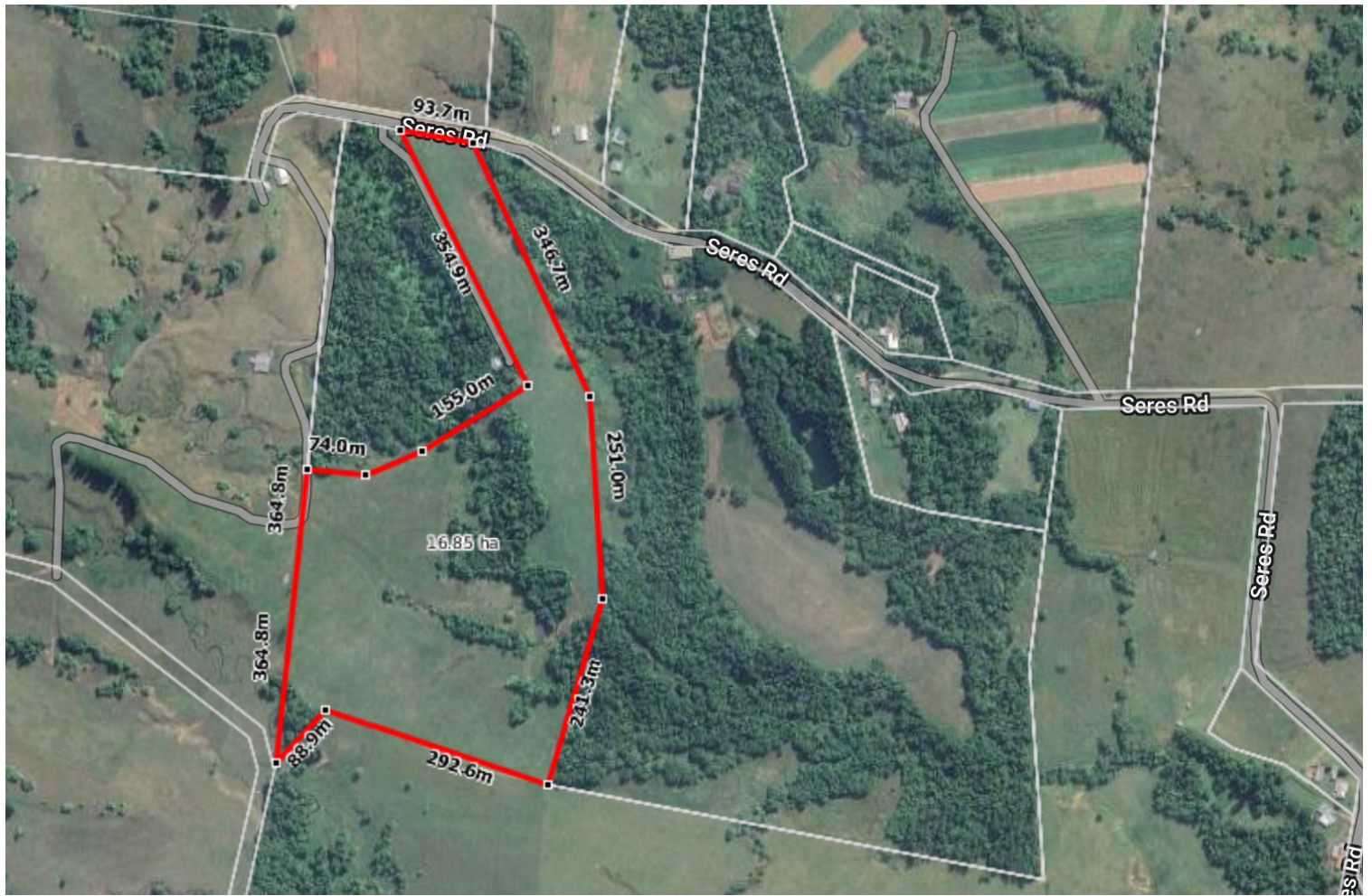


**Jean Laterre**

**0437696969**

[jean.ccr@atrealty.com.au](mailto:jean.ccr@atrealty.com.au)

[www.atrealty.com.au](http://www.atrealty.com.au)



Disclaimer: Please note this floor plan is for marketing purposes and is to be used as a guide only. All dimensions are estimates only and may not be exact measurements.