



FOR SALE

THE ULTIMATE COASTAL RETREAT

Wright Way Realty Jervis Bay is thrilled to showcase this exceptional north-facing waterfront property, which is nothing short of breathtaking and picturesque. Nestled in an absolute waterfront location, this home provides stunning views, an incredibly peaceful atmosphere, and an unparalleled serene living experience.

- @ This remarkable property is not just a home, it is a lifestyle!
- @ Bright and airy, north facing, with fabulous views across the canal
- @ As you enter this fantastic home you are be welcomed by a grand foyer
- @ The kitchen is a chefs dream, boasting views, storage, space, and gas cooking
- @ A huge lounge room and adjacent dining area both showcase magnificent views
- @ This spacious home boasts high ceilings, ducted air, plus a ducted vacuum system
- @ The master bedroom is a sanctuary on its own with an ensuite & big bay windows
- @ A spacious guest bedroom has a private balcony that overlooks the waterways
- @ Drive through triple garage to your own private boat ramp and waterfront jetty
- @ Landscaped gardens, lush greenery, and manicured lawns add charm
- @ The backyard is simply a haven for relaxation and entertainment
- @ Escape to your ultimate coastal retreat now!

@ Call Glenn to arrange your inspection. You will be impressed!

3 BED | 2 BATH | 3 CAR

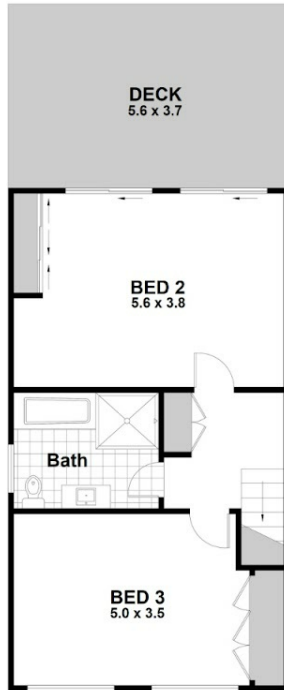
PRICE:
Just Listed

OPEN FOR INSPECTION:
N/A

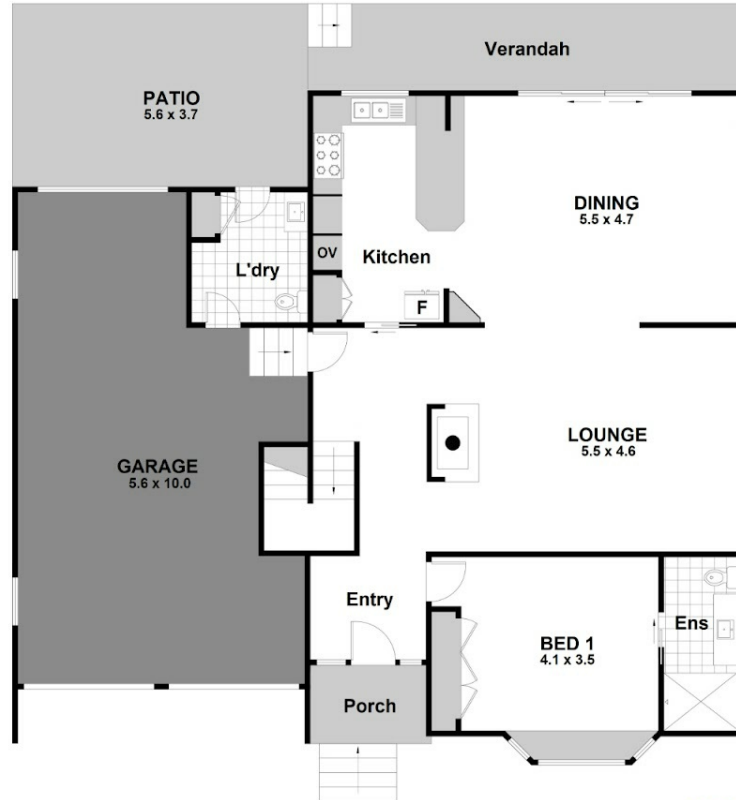


Glenn Wright
0408120866
glenn.wright@atrealty.com.au
Wright Way Realty

SECOND FLOOR



GROUND FLOOR



38 Cormorant Avenue, SUSSEX INLET



3



2.5



3

Scale is in Metres & indicative only & dimensions are only approximate.
The information contained & gathered herein is we believe from sources to be reliable.
We can not guarantee it's accuracy & persons should rely on their own enquiries.

WRIGHT WAY
realty
@realty

Disclaimer: Please note this floor plan is for marketing purposes and is to be used as a guide only. All dimensions are estimates only and may not be exact measurements.