

SOLD

PRIVATE CUL-DE-SAC HAVEN WITH STUNNING VIEWS & RECENTLY UPDATED!

This captivating home takes full advantage of its elevated location, offering stunning views and refreshing breezes while ensuring privacy for those seeking a retreat with close proximity to town. Beautifully updated, this lovely residence sits atop one of Bathurst's elevated points, providing convenient access to local schools and Bathurst CBD.

Upon entry, you are greeted by lovely high ceilings, brand new timber flooring, plantation shutters and fresh paint throughout. The kitchen is a dream for culinary enthusiasts, with loads of bench and cupboard space and quality appliances. Unwind in the adjacent, undercover deck taking in the Northern aspect and magnificent views to the mountains.

Heading down, you'll find brand new plush carpet throughout the three spacious bedrooms, complemented by floor-to-ceiling sheer curtains.

The home also has a second level with access from the rear with a personal door that presents endless possibilities - it could serve as a home gym, teenagers' or guest retreat or even be transformed into a dual living arrangement.

Features include but not limited to:

- * Low maintenance 550 sqm parcel of land
- * Single lock-up garage with remote control panel-lift door and internal access to front lounge
- * Front wrap around front verandah
- * Two spacious separate living areas
- * Modern kitchen with great bench space and cupboard space
- * Full size laundry with additional linen cupboard
- * Toilet to main bathroom plus 2nd separate toilet
- * Good size bedrooms and with built-in-robos
- * Ceiling fans
- * Beautiful, new plush carpet to all bedrooms
- * Double French doors lead out from the dining area to the perfect elevated deck, taking in the magnificent views
- * Gas central heating throughout the home

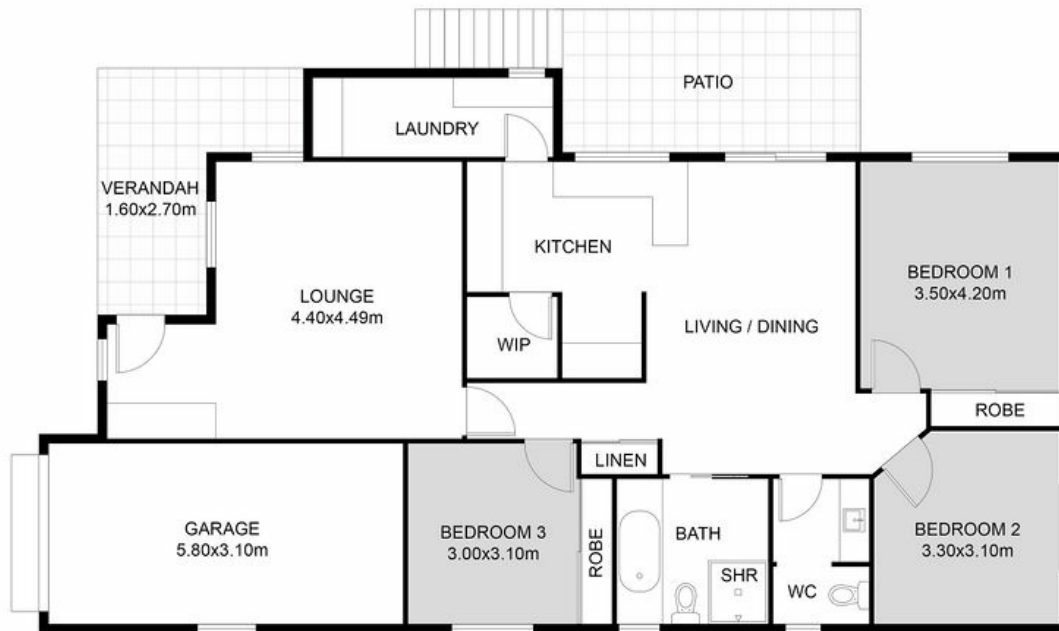
3 BED | 1 BATH | 1 CAR

PRICE:
\$650,000

OPEN FOR INSPECTION:
N/A



Leanne Hurley
0417655002
leanne@atrealty.com.au
www.atrealty.com.au



FLOOR PLAN

10 Gunning Place, Bathurst

Disclaimer: Please note this floor plan is for marketing purposes and is to be used as a guide only. All dimensions are estimates only and may not be exact measurements.