



SOLD

STYLISH APARTMENT WITH MODERN COMFORTS AND CONVENIENT LOCATION

This stylish apartment offers a premium standard of contemporary comfort, combining a well-designed floorplan with high-quality finishes throughout. Ideally located just minutes from Edmondson Park Station, Ed square shopping center, Aldi, and Woolworths, it presents a perfect blend of convenience and modern living.

- Spacious, light-filled interiors with an open-plan living and dining area
- Expansive balcony with a serene green outlook, perfect for entertaining
- Modern kitchen with stone benchtops and gas cooking appliances
- Two generously sized double bedrooms, both featuring built-in wardrobes
- Master bedroom includes a stylish main bathroom ensuite for added privacy and convenience
- Second bedroom opens to a private balcony, providing additional outdoor space
- Fantastic opportunity for first-home buyers or savvy investors
- Secure parking space and a storage cage located in the basement car park
- Close proximity to local buses and easy access to major road links, M5 and M7

This apartment offers an exceptional lifestyle opportunity or a solid investment in a sought-after location.

Strata: approx \$700 per quarter
Council rates: approx \$330 per quarter

With its unbeatable location and modern features, this apartment is a perfect choice for those seeking convenience, style, and a sound investment in one of the area's most desirable settings.

Contact Fady Markhay @realty

2 BED | 2 BATH | 1 CAR

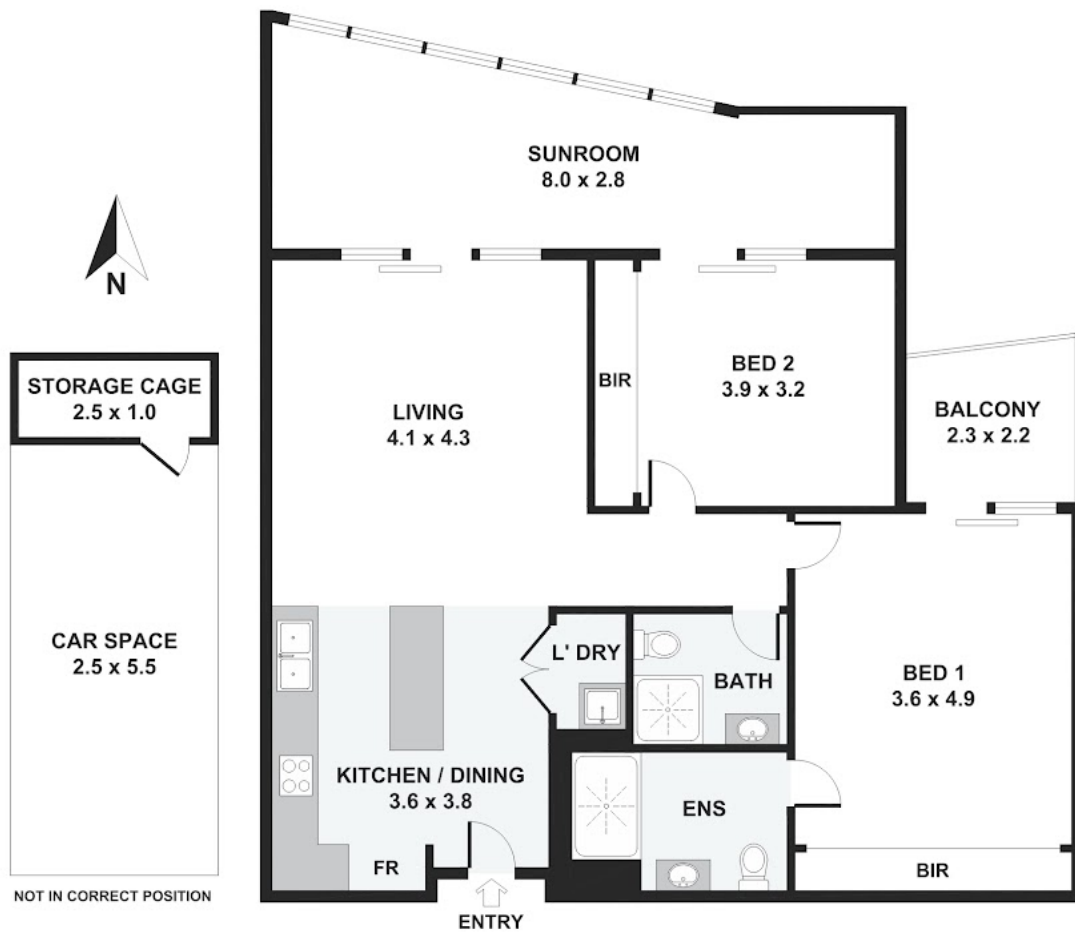
PRICE:
\$640,000

OPEN FOR INSPECTION:
N/A



Fady Markhay
0402757432
fady.markhay@atrealty.com.au
www.atrealty.com.au

15/1 Drinkwater Lane, Edmondson Park



Disclaimer: Please note this floor plan is for marketing purposes and is to be used as a guide only. All dimensions are estimates only and may not be exact measurements.

Please note: All stated dimensions are approximate only. Particulars given are for general information only and do not constitute any representation on the part of the vendor or agent.