



# FOR SALE

## MODERN SPACIOUS FAMILY HOME IN PRIME AUSTRAL LOCATION

This beautifully presented 4-bedroom home is perfect for growing families. Nestled in the heart of Austral, it offers a comfortable and stylish living space. Its was completed on last November.

### Features:

- Master bedroom with ensuite and walk-in robe
- Built-in wardrobes in all bedrooms
- Upstairs Carpeting and downstairs tiling throughout
- Spacious living areas
- Gourmet kitchen with 40mm stone benchtops, DeLonghi oven, and rangehood
- Kitchen Pantry
- Study nook for convenient home office or study space
- Luxurious bathrooms with ceiling height tiles, bathtubs, and wall-hung vanities
- Zoned Ducted air-conditioning
- Generous tiled alfresco area for outdoor entertaining
- Alto cornices for a touch of elegance
- Double Garage with remote control

This property is ideally located close to schools, parks, and transport. Don't miss out on this fantastic opportunity!  
(Next to future shopping and School zone)

Contact Prajwal today on 0423 743 157 for more information.

Online enquiry policy:

All email & online enquiries received from this website will not be attended to if a contact number & email address are not provided. To be able to view the property, we require that you register.

Disclaimer:

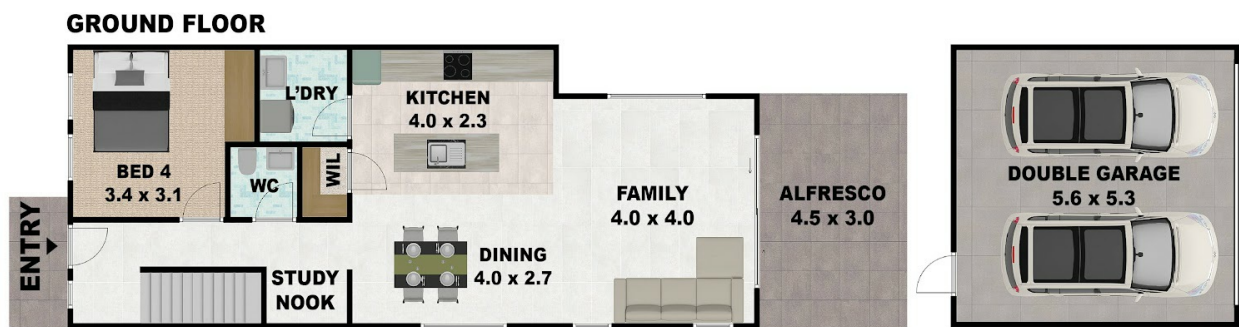
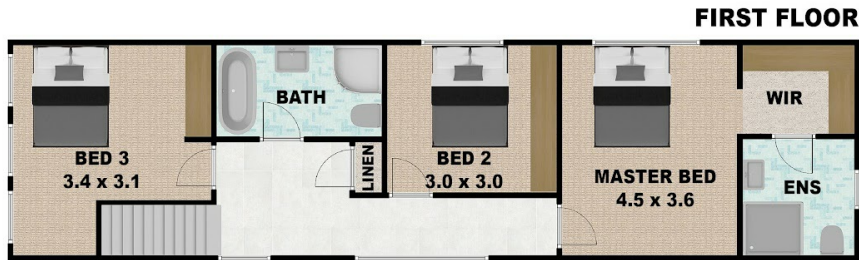
4  | 2  | 2 

PRICE:  
Just Listed



**Prajwal Bhattarai**  
0423743157

prajwal@propticonnect.com.au  
[propticonnect.com.au](http://propticonnect.com.au)



# 313 EIGHTH AVENUE, AUSTRAL NSW 2179

DISCLAIMER: THIS IS FOR ILLUSTRATIVE PURPOSES ONLY. ALL DIMENSIONS ARE APPROXIMATE AND IT DOES NOT CONSTITUTE PART OF ANY LEGAL DOCUMENT.  
All dimensions are approximate. Actual dimensions may vary.

Disclaimer: Whilst every effort has been made to ensure the accuracy of these particulars, no warranty is given by the vendor or the agent as to their accuracy. Interested parties should not rely on these particulars as representations of fact but must instead satisfy themselves by inspection or otherwise.