



**SOLD**

**EXPRESSION OF INTEREST CLOSING 26TH  
APRIL AT 5:00 PM UNLESS SOLD PRIOR**

INSPECTION BY PRIVATE APPOINTMENT ONLY

This bright and stylish two-bedroom townhouse is everything you've been looking for! It's in the perfect location, only a stone's throw away from shops, public transport, schools, and everything you need. This property ticks all the boxes, so inspect quickly, as this one won't last!

This two-storey property is ideal for a first-home buyer or investor. It offers an open-plan living area that opens onto a bright, sun-filled balcony. The modern kitchen features stone benchtops, plenty of cupboard space, and stainless steel appliances (including a dishwasher!).

Two separate bedrooms, each fully carpeted with built-in robes, plus a central modern bathroom with a bath! Bonus features include a separate powder room (downstairs and upstairs), a euro laundry and a fully fenced private outdoor nook with a shed.

Annual Outgoings (Approx)  
Rates - \$1,500  
Owner's Corp - \$1,200  
Water - \$800

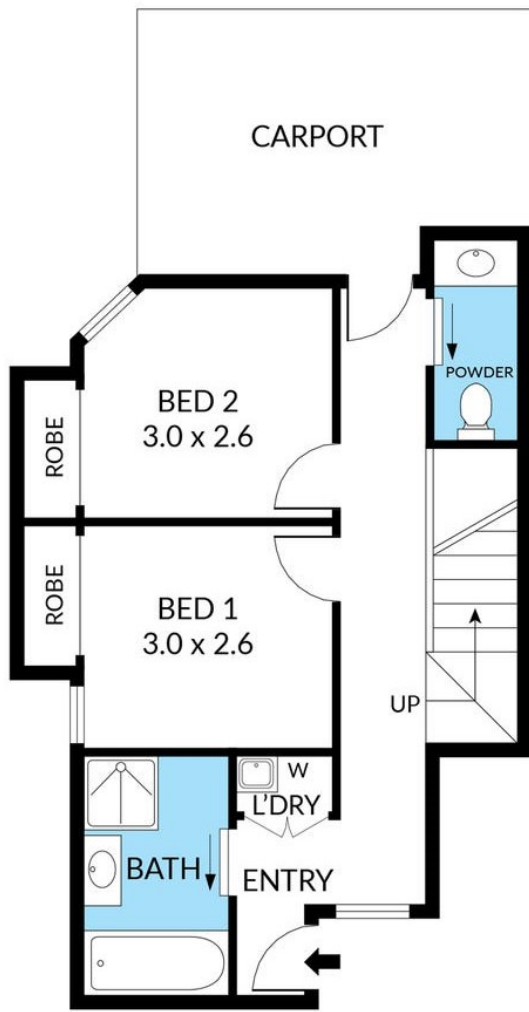
**2 BED | 1 BATH | 1 CAR**

**PRICE:**  
\$501,000

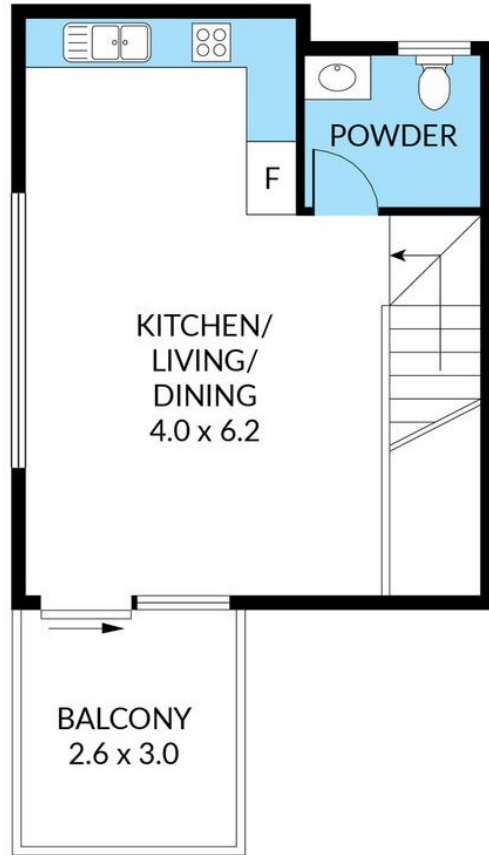
**OPEN FOR INSPECTION:**  
N/A



**Leigh Chant**  
**0418100082**  
leighchant@atrealty.com.au  
[innermelbournere.com.au](http://innermelbournere.com.au)



LOWER LEVEL



UPPER LEVEL

Disclaimer: Please note this floor plan is for marketing purposes and is to be used as a guide only. All dimensions are estimates only and may not be exact measurements.