



## FOR SALE

### MODERN & SPACIOUS FAMILY LIVING IN A PRIME LOCATION

Welcome to this beautifully designed home, where style and comfort come together in a spacious and elegant living area. The open-plan layout effortlessly blends the family and meals areas, providing the perfect setting for both everyday living and entertaining.

At the heart of the home, a stylish main kitchen boasts a large island bench, a walk-in pantry, and sleek modern appliances. A second kitchen, conveniently positioned nearby, is perfect for meal prep or hosting larger gatherings.

The master suite offers a private retreat with a walk-in robe (WIR) and a luxurious ensuite featuring floor-to-ceiling tiles. The second bedroom also includes a WIR, while the additional two bedrooms are generously sized with built-in robes. A fully tiled central bathroom and a guest powder room near the entry add to the home's convenience.

Functionality is key, with a spacious laundry, ample storage throughout, and a double garage with internal and backyard access, plus extra storage space.

Outdoors, the low-maintenance yard is perfect for relaxation or family BBQs. Year-round comfort is ensured with zoned refrigerated heating and cooling.

Situated in a sought-after, family-friendly neighborhood, this home is close to local schools, childcare centers, the upcoming aquatic center, community center, P-12 school, future reserve, and a major shopping center.

Don't miss this opportunity to own a modern, thoughtfully designed home with dual kitchens—perfect for contemporary family living!

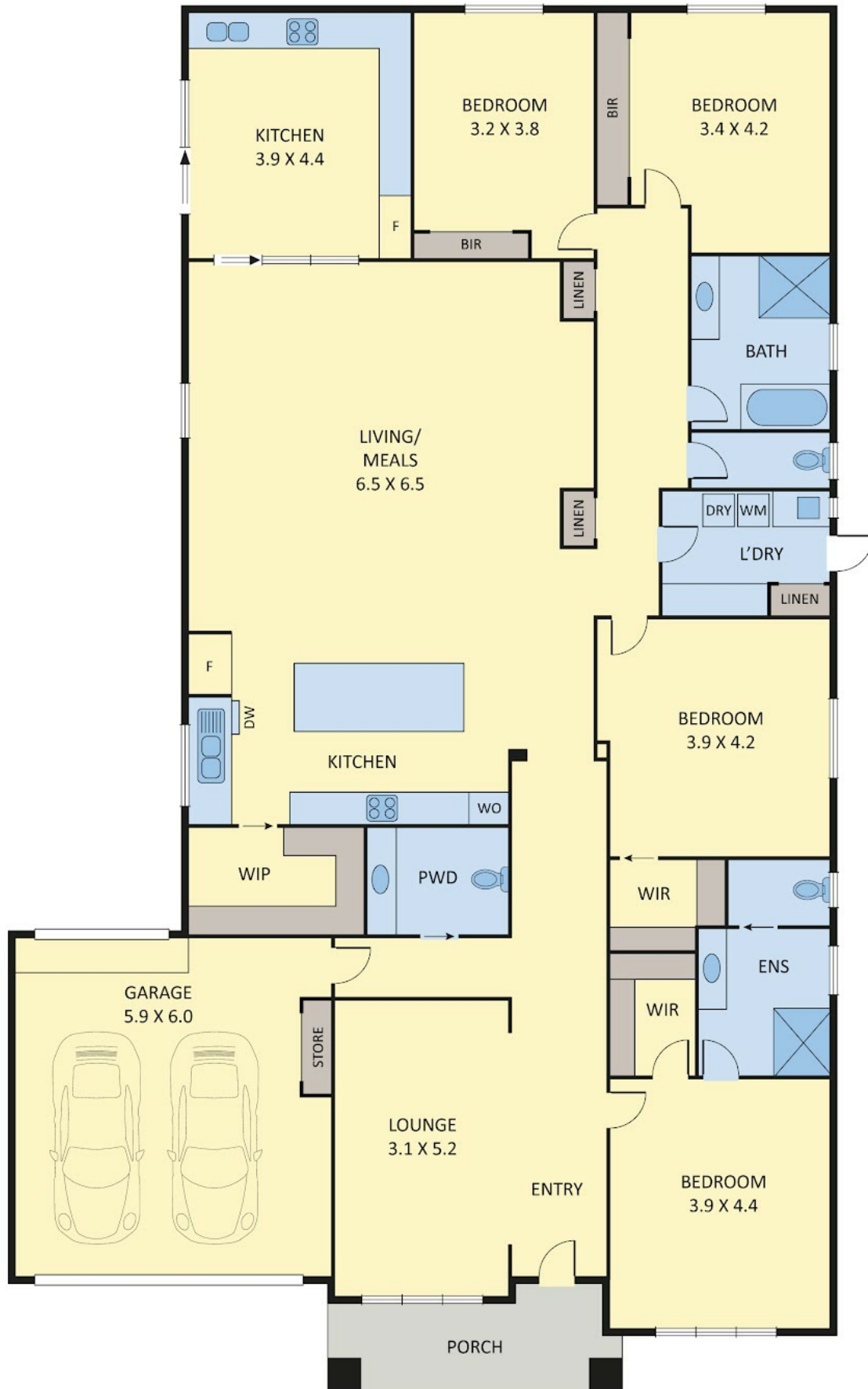
4 BED | 2 BATH | 4 CAR

PRICE:  
Contact Agent

OPEN FOR INSPECTION:  
N/A



**Maneesh Sharma**  
0432615551  
msharma@atrealty.com.au  
[www.atrealty.com.au](http://www.atrealty.com.au)



Disclaimer: Please note this floor plan is for marketing purposes and is to be used as a guide only. All dimensions are estimates only and may not be exact measurements.



**Maneesh Sharma**

0432615551

msharma@atrealty.com.au

www.atrealty.com.au



All dimensions herein are approximate and gathered from sources believed to be reliable. Whilst every effort is made for the accuracy of our floor plans, interested parties should rely on their own measurements.