



SOLD

SOLD AT A PREMIUM PRICE BY YOGI SHARMA – CONTACT US TODAY FOR EXCEPTIONAL RESULTS!

This stunning 3-bedroom, 1-bathroom townhouse with a lockable garage offers the perfect combination of comfort, convenience, and style. Nestled in a sought-after resort-style complex, you'll enjoy ample parking, a gated community a sparkling pool, and your own private courtyard for peaceful moments. Whether you're relaxing by the pool or entertaining guests, this property provides the ultimate lifestyle of luxury and ease.

Ground Floor: Stylish Open-Plan Living

Step into a bright and spacious living and dining area enhanced by modern tiled flooring and a striking timber staircase. Beautiful timber beams add warmth and character, creating a cozy yet contemporary vibe. The living area flows seamlessly into a fully fenced, brick-paved courtyard – perfect for entertaining or relaxing with minimal upkeep required.

Kitchen: Functionality Meets Style

The well-equipped kitchen is designed to make cooking and entertaining a breeze. With ample storage, a gas cooktop, and a generous walk-in pantry, you'll have everything you need. The breakfast bar offers additional prep space or a casual dining area, ideal for busy mornings or weekend gatherings.

Practical & Convenient Layout

The lower level also includes a separate laundry and additional toilet, offering convenience and practicality without disrupting the upstairs living spaces. This thoughtful layout ensures ease of use for everyday tasks and guest accommodation.

Bedrooms: Bright, Spacious & Comfortable

Upstairs, you'll find three generously sized bedrooms, all carpeted for comfort and featuring large windows that fill each room with natural light. Built-in wardrobes provide plenty of storage, while the master bedroom boasts a walk-in wardrobe and air conditioning, offering year-round comfort.

3 BED | 1 BATH | 1 CAR

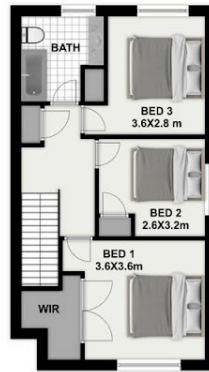
PRICE:
\$480,000

OPEN FOR INSPECTION:
N/A



Yogi Sharma
0415558800

yogi.sharma@atrealty.com.au
www.atrealty.com.au



55/188 Ewing Road, **WOODRIDGE**



Areas:
Garage: 18m ²
Living 95m ²
Total 113m²

This floorplan is not to scale; measurements are indicative and in meters. Exterior elements are not in position. Plans should not be relied on. Interested parties should make and rely on their own enquiries. All other information provided has been collected from reliable sources but cannot be guaranteed for accuracy.

Disclaimer: Please note this floor plan is for marketing purposes and is to be used as a guide only. All dimensions are estimates only and may not be exact measurements.