



## FOR SALE

### FIRST TIME EVER BROUGHT TO THE MARKET - A DEVELOPMENT OPPORTUNITY OR INSPIRING FAMILY HOME IN THE HEART OF YARRALUMLA.

This much loved family home presents on a remarkable 1053m<sup>2</sup> land parcel where all of your wishes can come true. If it's making it all new again, or becoming creative and inspired in this perfect location, this is really something for you to get excited about!

With a northerly aspect to the living rooms, this property has catered for a large extended family over many years, and has a self-contained flat adjoined to the rear. With five bedrooms throughout, 3 bathrooms and a double carport to the side, large rumpus room with sink, open plan kitchen with meals, family, and formal dining room, large lounge room to the front and enormous, covered entertaining porch, you will celebrate the plethora of space and choice available to you to explore and enjoy in this property.

Located in Hopetoun Circuit, just up from the Yarralumla shops, highly sought after schools, Lake Burley Griffin and onto Canberra City, your opportunities here are endless.

I look forward to meeting with you and introducing you to this first time listed, exciting property.

Early Offers Considered.

Auction Onsite Sat 19 Oct at 12 Noon - SOLD PRIOR TO AUCTION - PRICE UNDISCLOSED

#### Features:

- Large family home
- 1053m<sup>2</sup> block perfect Yarralumla location
- Close to Yarralumla shops, Parliamentary Triangle, Royal Canberra Golf Course, Deakin shops, Canberra City, public transport
- North orientation to the kitchen and living rooms, large rumpus with sink and large lounge room
- Rear self-contained flat (Separately metered for electricity)
- 5 bedroom, 3 bathrooms
- 4 x Air Conditioning Wall Units
- Ducted gas floor heating to the front part of the house

5 BED | 3 BATH | 2 CAR

#### PRICE:

Sold Prior to Auction - Price Undisclosed

#### OPEN FOR INSPECTION:

N/A

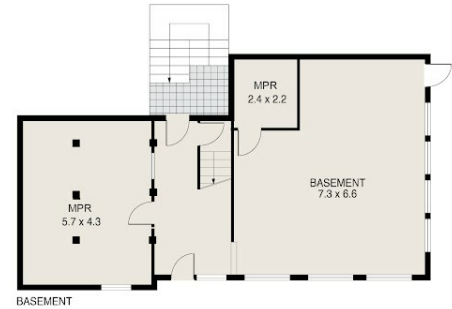
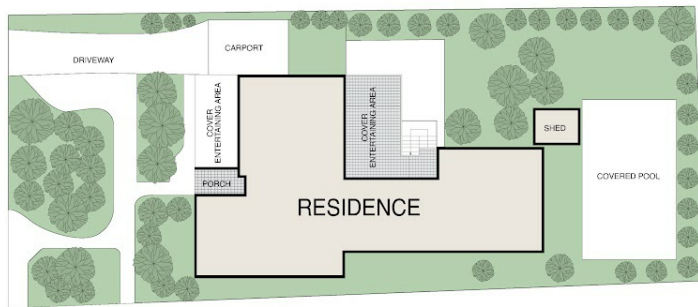


**Stephanie Hendry**

**0404491413**

[stephanie@thepropertyagents.com.au](mailto:stephanie@thepropertyagents.com.au)

[www.thepropertyagents.com.au](http://www.thepropertyagents.com.au)



Disclaimer: Please note this floor plan is for marketing purposes and is to be used as a guide only. All dimensions are estimates only and may not be exact measurements.