



FOR SALE

EXCEPTIONAL DUAL LIVING QUEENSLANDER WITH CITY VIEWS AT 37 LAMINGTON TERRACE, DUTTON PARK, QUEENSLAND

A Unique Opportunity Awaits!

Welcome to 37 Lamington Terrace, an exquisite Queenslander-style home that perfectly combines classic charm with modern dual living potential. This stunning property is situated in the highly sought-after Dutton Park, offering the ideal setup for families, multi-generational living, or savvy investors.

Key Features:

Dual Living Setup: This remarkable home is designed for versatility, featuring two separate living areas that can easily accommodate extended families or generate rental income. Each space offers privacy and comfort plus Air-Conditioning throughout, making it an ideal solution for varied living arrangements.

Classic Queenslander Charm: Enjoy the character and elegance of a traditional Queenslander, complete with high ornate ceilings, beautiful timber flooring, and intricate detailing. The spacious outdoor areas provide a perfect spot to relax and enjoy the breezes and beautifully landscaped gardens complete with irrigation system, epitomizing the quintessential Queensland lifestyle.

Generous Living Spaces: The open-plan design seamlessly connects the living, dining, and kitchen areas, creating a welcoming atmosphere. Large windows allow for abundant natural light, enhancing the home's warm and inviting feel.

Modern Kitchen: The well-equipped kitchen in both living areas feature quality appliances and ample storage, making them perfect for cooking and entertaining.

Comfortable Bedrooms: Multiple spacious bedrooms ensure everyone has their own sanctuary. With a spacious Master bedroom featuring stained glass bay windows. All bedrooms offer built-in wardrobes and easy access to well-appointed bathrooms.

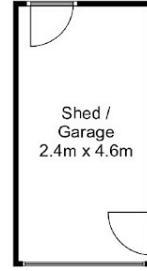
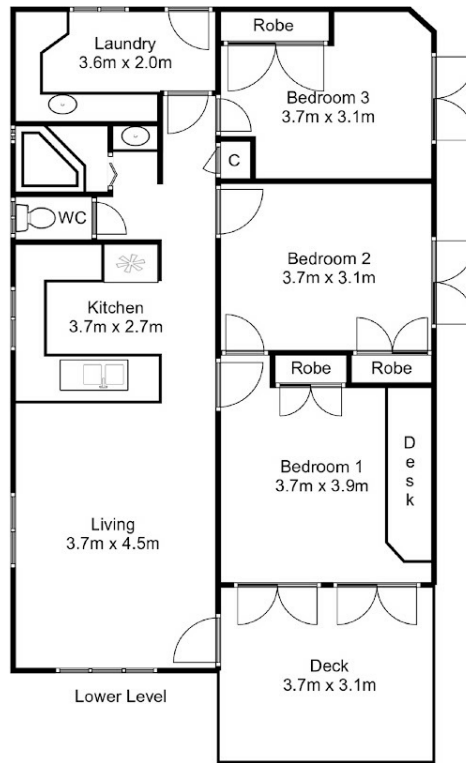
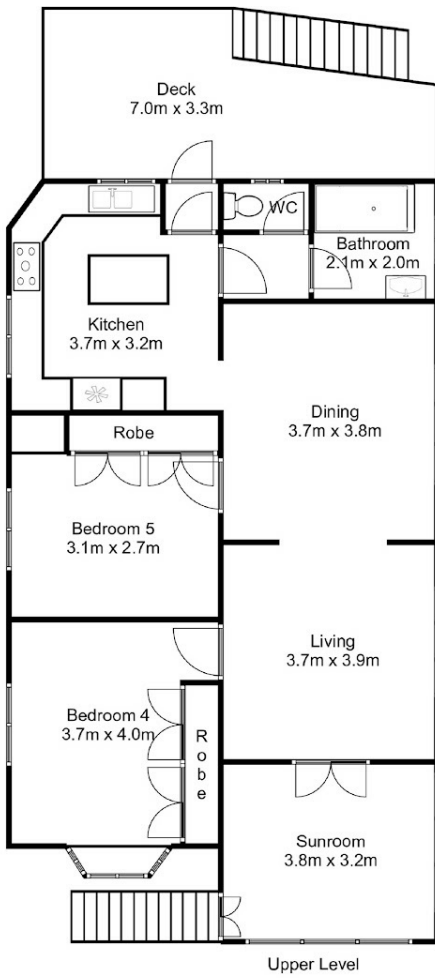
5 BED | 2 BATH | 1 CAR

PRICE:
\$1,950,000 negotiable

OPEN FOR INSPECTION:
N/A



Bruce Tame
0419699349
bruce@instylerealty.com.au
www.instylerealty.com.au



**37 Lamington Terrace,
Dutton Park**
Approx. Areas in m²
Upper Level - 97.8m²
Lower Level - 83.0m²
Decks - 28.2m²
Garage / Shed - 10.4m²
Total - 219.4m²



Whilst every attempt has been made to ensure the accuracy of this floor plan, all measurements shown or implied are approximate and no responsibility is taken for any error, or omission, nor is any warranty given. Kitchen, bathrooms, appliances, fixtures, fittings or any other items shown are representative only and do not necessarily match what is in the property. Different levels may not align correctly. These plans are for illustrative purposes only and should be used as such. Copyright 2024 - www.realestatepics.com.au. All rights reserved.

Disclaimer: Please note this floor plan is for marketing purposes and is to be used as a guide only. All dimensions are estimates only and may not be exact measurements.