

**SOLD**

## DISCOVER MODERN ELEGANCE IN RIPLEY !!

Experience modern elegance with this stylish three-bedroom home in the heart of Ripley. Featuring two living areas and designed for effortless, low-maintenance living, this property is ideal for first-home buyers, downsizers, and investors seeking an affordable entry into the market. Highlighted by a designer kitchen with gas cooking, this home is a must-see!

### Property Overview:

- Block Size- Approx. 229.4 m<sup>2</sup>
- Home Size- Approx. 150 m<sup>2</sup>
- Built By- Sekisui House
- Current Tenancy - Rented until 24/1/2025 at \$500/week
- Future Rental Appraisal \$570/week
- No body corporate

### Features Include:

- Master bedroom with ensuite and walk-in robe
- Two additional generously sized bedrooms with built-in robes
- Modern kitchen with gas cooktop and electric oven
- Tiled flooring throughout
- Ceiling fans throughout
- Split air conditioning in master bedroom and main living area
- 11.6 kW solar system
- Security cameras with monitor in garage
- Epoxy flooring in garage
- Attached aluminium shelves and hooks in garage for garden equipment
- Alfresco area with fan for year-round entertaining
- Single lock-up remote garage
- Fully fenced yard

### Prime Location:

Enjoy a range of premium amenities including parks, playgrounds, and walking trails, perfect for an active lifestyle. Ripley Valley is one of the fastest-growing suburbs in the state, with the population expected to double in Greater Ipswich by 2031. This area is a hot spot for future growth and ideal for raising a family or capitalizing on future developments.

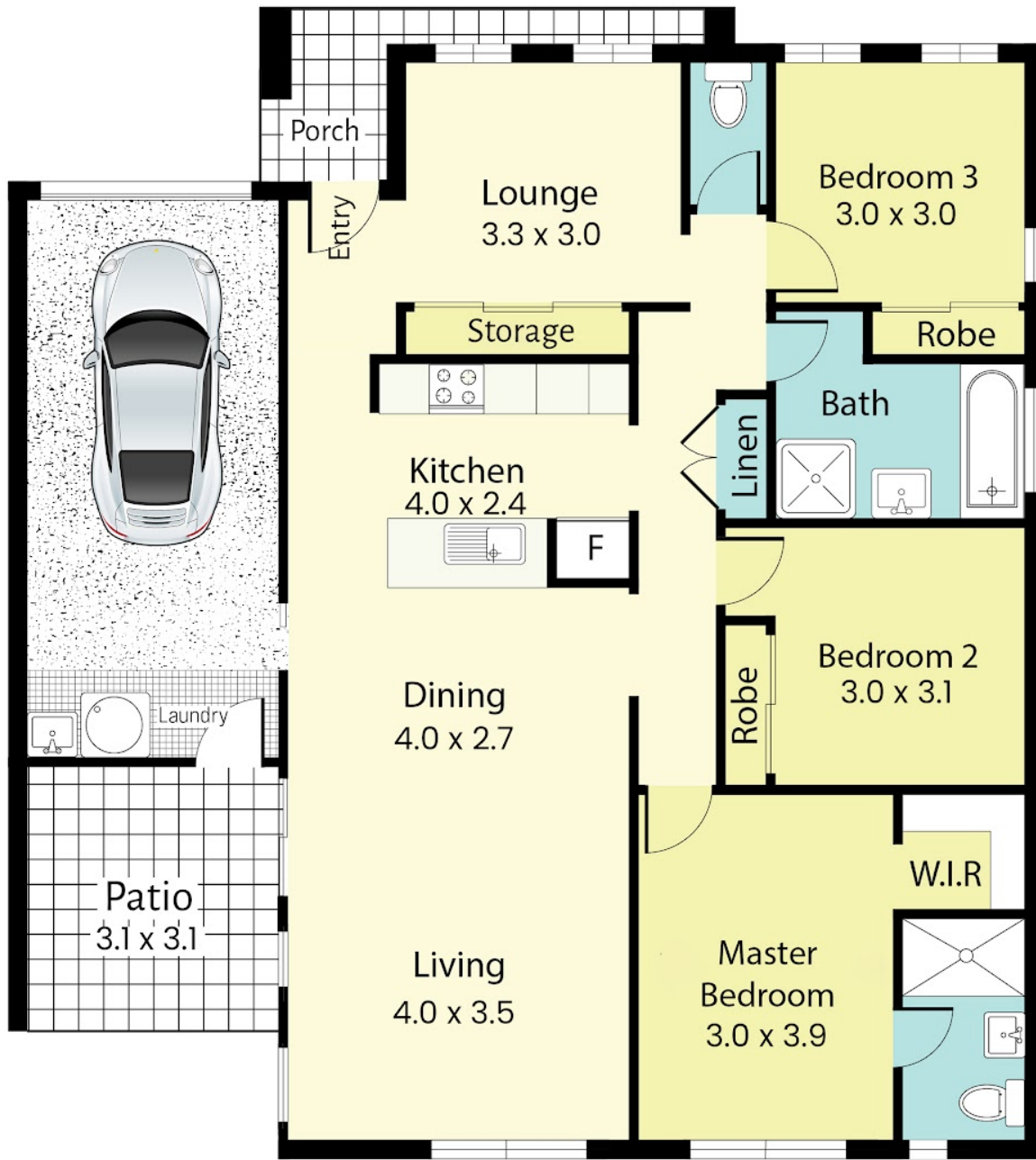
**3 BED | 2 BATH | 1 CAR**

**PRICE:**  
**\$611,000**

**OPEN FOR INSPECTION:**  
**N/A**



**Niket Kalra**  
**0412345000**  
niket.kalra@atrealty.com.au  
[www.atrealty.com.au](http://www.atrealty.com.au)



## 50 Waterfern Way, Ripley

TOTAL APPROX FLOOR AREA: 150m<sup>2</sup>

Disclaimer: Please note this floor plan is for marketing purposes and is to be used as a guide only. All dimensions are estimates only and may not be exact measurements.