



SOLD

IMMACULATE 4-BEDROOM HOME IN PRIME WOONGARRAH LOCATION

Don't miss the opportunity to view this stunning 4-bedroom, 2-bathroom home with a 2-car garage, located in the highly sought-after suburb of Woongarrah. Perfectly positioned just minutes from local schools, shops, medical facilities, the train station, and the M1 Motorway, this home offers convenience and tranquility in equal measure.

Key Features:

- **Pristine Condition:** This home has been meticulously maintained, ensuring it's move-in ready.
- **Spacious Living:** Four generously sized bedrooms, each with built-in wardrobes; the master bedroom includes a private ensuite.
- **Open Plan Living:** Multiple open-plan living areas featuring elegant floating floorboards throughout.
- **Outdoor Oasis:** Enjoy a level, fully fenced backyard with side gate access—ideal for storing trailers, boats, or caravans. The fully fenced front yard maximizes the use of the entire land area.
- **Tranquil Setting:** Situated directly opposite a nature reserve, this home offers a serene and private retreat.
- **Modern Comforts:** Benefit from ducted air conditioning, a recently restored roof, and an updated kitchen complete with a gas cooktop and dishwasher.

Homes of this quality and in such pristine condition are rare. For more information or to arrange a private viewing, contact Brad Barker at 0413 875 833.

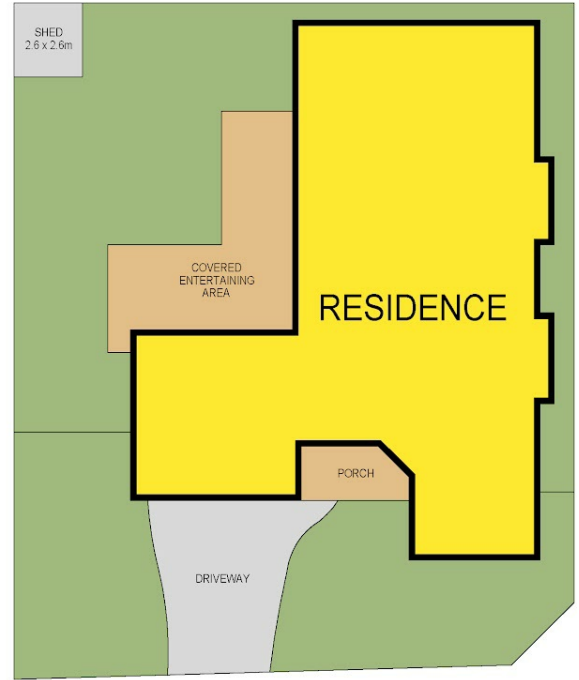
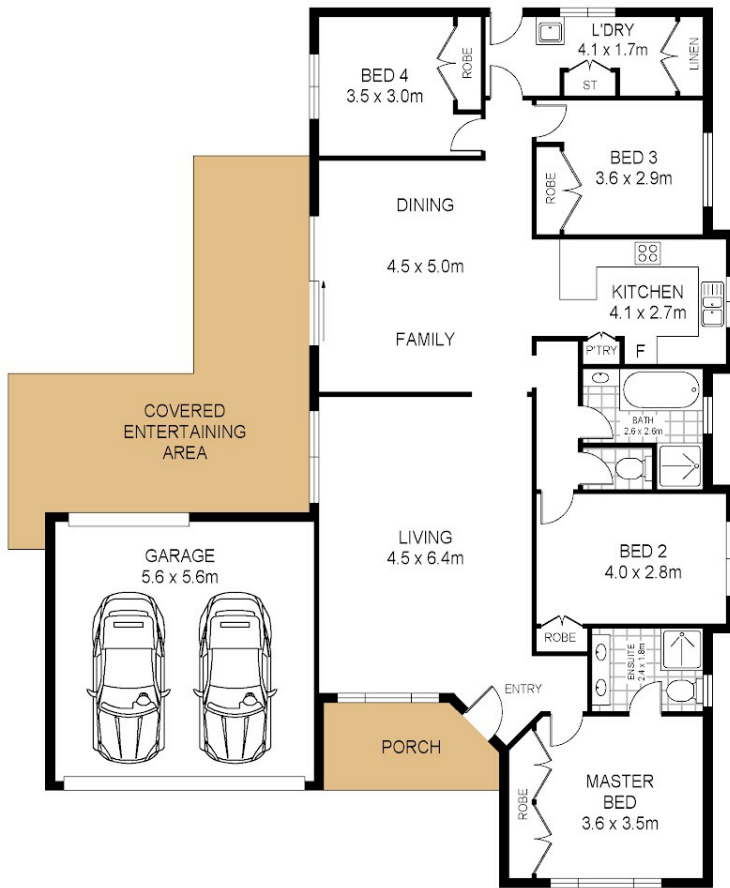
4 BED | 2 BATH | 2 CAR

PRICE:
\$862,000

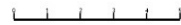
OPEN FOR INSPECTION:
N/A



Brad Barker
0413875833
bradbarker@atrealty.com.au
www.atrealty.com.au



16 Viewfield Crescent
Woongarrah



Total Internal Floor Area: 186 sqm

Scale in metres. Indicative only. Dimensions are approximate. All information contained herein is gathered from sources we believe to be reliable. However we cannot guarantee its accuracy and interested persons should rely on their own enquiries.



Disclaimer: Please note this floor plan is for marketing purposes and is to be used as a guide only. All dimensions are estimates only and may not be exact measurements.