



SOLD

TOO CUTE!

This adorable circa 1900's workers cottage in the heart of Annerley has been meticulously and flawlessly renovated to retain the original features of the era.

There is nothing to do here folks. All you need is your bag, your hat and a car if you want to start enjoying the tranquility and proximity of your new home in one of the most sought after streets of Annerley.

This classic workers cottage enjoys 2 bedrooms, each with ceiling fans and 1 with a built-in robe. Also on the upper level you have a renovated bathroom, kitchen with top quality appliances and a lounge/dining with air conditioning. All of this opens beautifully to a rear deck in the treetops overlooking your leafy backyard.

The one bedroom studio apartment on the lower level with separate entrance is perfect for students or singles, providing instant income for you. It also opens onto another rear deck overlooking the same alluring backyard.

This backyard is fully fenced, landscaped with lawn, a chook pen and terraced lush gardens.

Features include -

- * Gas cooking
- * Dishwasher
- * Plenty of under house storage
- * Lovely triple gable for street appeal
- * Original VJ walls, polished timber floors and windows.
- * New roof with double insulation
- * Easy walking distance to Fairfield Train station
- * Walking distance to both High and Primary schools
- * In the sought after catchment of Yeronga State High School
- * Just 2.5 kms to the city, 5.7 kms (13mins) by road
- * 2.5 kms (6mins) to the Eleanor Schonell Bridge and the University of Queensland
- * 2.5 kms (6mins) to the Pacific Motorway

This won't last

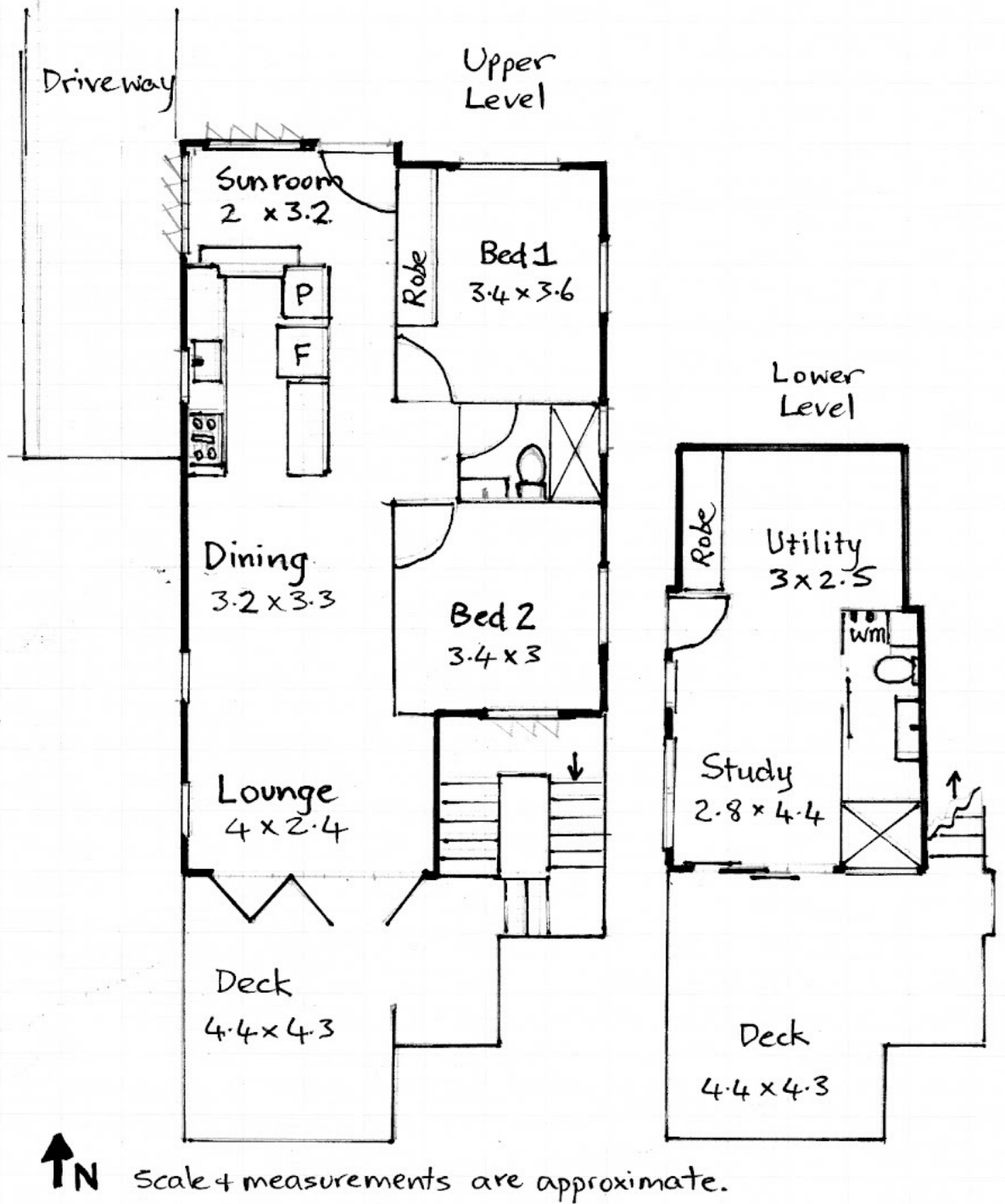
2 BED | 2 BATH | 1 CAR

PRICE:
\$732,500

OPEN FOR INSPECTION:
N/A



Adrian Matthews
0403171644
adrianmatthews@atrealty.com.au
www.atrealty.com.au



Disclaimer: Please note this floor plan is for marketing purposes and is to be used as a guide only. All dimensions are estimates only and may not be exact measurements.