



FOR SALE

INVEST HERE- LAST RENTED AT \$620PW

Grab a Bargain! Lock n' leave or first home, fresh and near new built in 2020 with Master Builder's Guarantee.

Strategically located close to Middlemore and everything Favona/ Mangere has to offer with easy access to the Motorway.

This affordable brick townhouse sits on a corner and has the convenience of a second toilet downstairs, two double bedrooms with wardrobes and plenty of natural light. Tastefully decorated with modern appliances, double glazed windows and plenty of storage.

The sunny open plan living area flows effortlessly onto a small fenced back yard with a deck - enough outdoor space to enjoy your morning cuppa before a busy day.

The townhouse is part of a tidy, well managed complex with an allocated parking spot.

This home is move- in ready with Healthy Home Certificate. Great investment recently rented for \$620pw.

Call Paula now!

2 BED | 2 BATH | 1 CAR

PRICE:

Asking price \$549,000

OPEN FOR INSPECTION:

N/A



Paula Ihaka

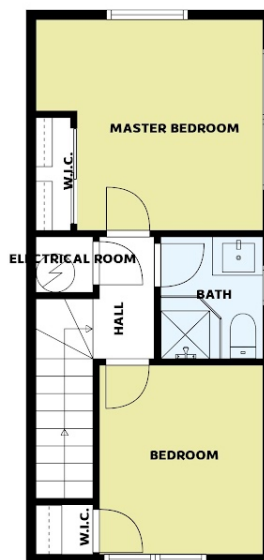
0204778874

paula@realty.co.nz

www.atrealty.co.nz



FLOOR 1



FLOOR 2

Floor Plan Created By Cubicasa App. Measurements Deemed Highly Reliable But Not Guaranteed.



Disclaimer: Please note this floor plan is for marketing purposes and is to be used as a guide only. All dimensions are estimates only and may not be exact measurements.