

SOLD

ALMOST 2 ACRES WITH OCEAN VIEWS WITHIN MINUTES TO EVERYTHING!

Price adjusted, motivated vendors.

A hidden gem, a nature lovers delight, a stunning Ocean View retreat on nearly 2 Acres! Available for the first time in 31 years, this is a unique opportunity to own this property loaded with character and personality, boasting breathtaking ocean views located within minutes to all the major amenities of the Gold Coast and Burleigh Beach!

The owners of this home have spent the last 3 decades creating the native gardens and a magical bush rainforest teeming with wildlife and birdlife which enjoys the bush tucker all year round. Wallabys, bush turkeys and the exciting birdlife thrives happily. A spot to enjoy quiet times, fun for the kids and grand kids, your very own oasis! The property backs onto Parkland and a dry creek which you can hear when it rains.

Furthermore Watch the sun rise, enjoy the stunning ocean views and the Easterly breezes on the wrap around veranda, sit by the open fireplace in winter in the formal lounge or enjoy family time in the large open plan kitchen/ dining and living area! The property even has a cool loft bedroom with ocean and rainforest views!

Needing extra space for the elders, extra income for an Airbnb or the kids who need their own privacy and space? Create a Granny flat in the garage/ workshop space under the house!

All of this magic in this ideal location within minutes to the M1, many of the major private and public schools of the Gold Coast, Burleigh Beach, Robina Town Centre, Golf Courses and anything you might need!

Move in and personalise or create your own magic! Truly a rare find and unique property to make this hidden treasure yours today.

It is not easy to photograph and capture the spirit of this home! An inspection is a must...

Property Highlights:

- 7392m2 backs onto Parkland with a dry creek that you can hear when it rains
- East aspect with Ocean views to Burleigh Heads and beyond
- Formal lounge with 4.7m ceilings with a grand fire place with ocean views leading out to the verandah

4 BED | 2 BATH | 2 CAR

PRICE:
\$1,650,000

OPEN FOR INSPECTION:
N/A



Audrey Goetz
0412148078

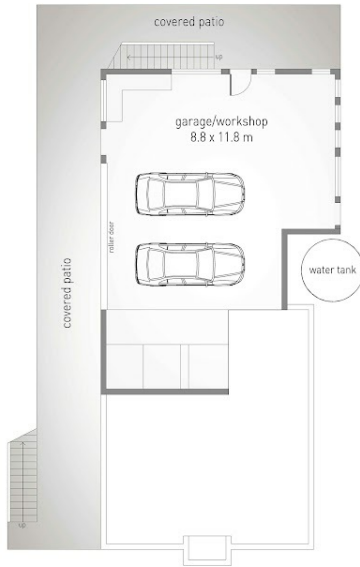
audrey@atrealty.com.au

<https://www.audreygoetzproperties.com>

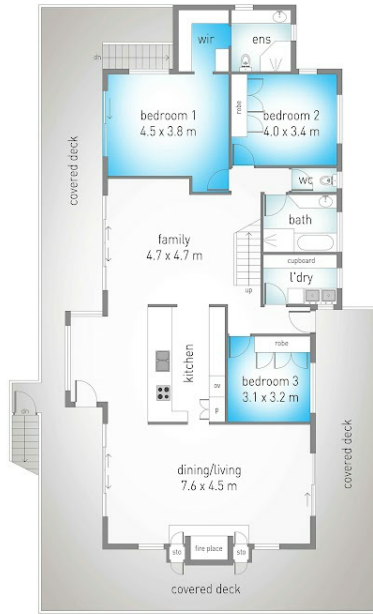
92 Bridgman Drive, Reedy Creek

3 2 2 7,391 m²
internal: 290 m² | external: 171 m² | total: 461 m²

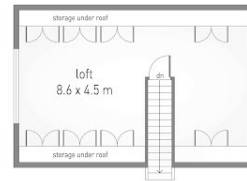
@realty
Audrey Goetz 0412 148 078



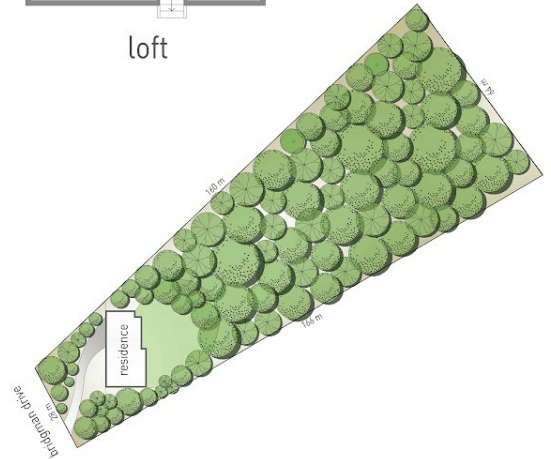
ground floor



first floor



loft



site plan



Dimensions are approximate. All information contained herein is gathered from sources we believe to be reliable. However we cannot guarantee its accuracy and interested persons should rely on their own enquiries.



Disclaimer: Please note this floor plan is for marketing purposes and is to be used as a guide only. All dimensions are estimates only and may not be exact measurements.

Audrey Goetz
0412148078
audrey@arealty.com.au
<https://www.audreygoetzproperties.com.au/>

