



SOLD

BIG, BOLD & BEAUTIFUL DUPLEX

Leased until January 2025 at \$600 per week. Nestled in the heart of the highly sought-after Bellamack suburb, this stunning 3-bedroom duplex offers modern living at its finest. From the moment you step inside, you'll be captivated by the open-plan design that seamlessly flows from the living area to the spacious outdoor patio—perfect for both relaxing and entertaining.

The sleek, modern kitchen is a true highlight, featuring elegant stone benchtops, ample storage, and quality appliances that make cooking a joy. The large patio is an extension of your living space, creating the perfect setting for outdoor dining or casual weekend barbecues.

With built-in wardrobes, air-conditioning throughout, and a fully tiled interior, this home combines luxury with practicality. The master bedroom boasts an ensuite, offering a private sanctuary, while the additional two bedrooms that are tucked away from the foot-traffic provide generous space for family or guests.

A double carport for both vehicles and the low-maintenance courtyard.

This property represents the perfect balance of style, functionality, and comfort, making it an ideal home for families, couples, or downsizers looking to enjoy a modern lifestyle in a peaceful location.

Property Highlights:

- Stunning and spacious 3-bedroom, 2-bathroom duplex
- Beautiful open-plan living area, perfect for family gatherings
- Large patio, ideal for outdoor entertaining
- Private courtyard with a handy storage shed
- Double carport for parking
- Outdoor lockable storage room
- Fully tiled and air-conditioned throughout for year-round comfort
- Elegant modern kitchen with sleek stone benchtops and quality finishes
- Built-in wardrobes in all bedrooms, adding ample storage and a stylish touch

About the Suburb:

- Gateway Shopping Centre nearby Your go-to destination for shopping, dining, and entertainment, Gateway Shopping Centre provides everything you need for a day out, all within

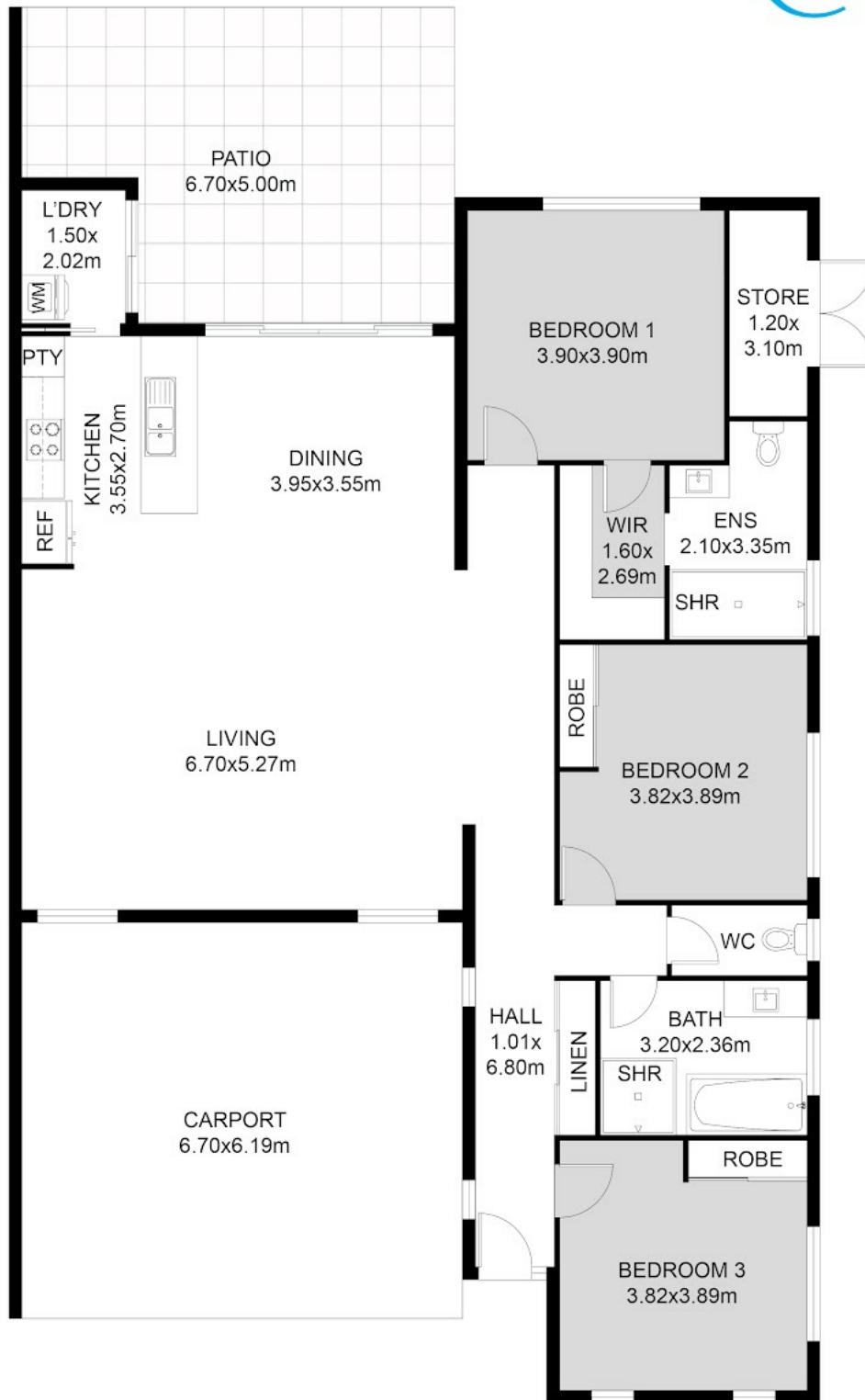
3 BED | 2 BATH | 2 CAR

PRICE:
\$540,000

OPEN FOR INSPECTION:
N/A



Nicole Wheeler
0417508800
nicolewheeler@atrealty.com.au
www.atrealty.com.au



FLOOR PLAN

Disclaimer: Please note this floor plan is for marketing purposes and is to be used as a guide only. All dimensions are estimates only and may not be exact measurements.

This floor plan including furniture, fixture measurements and dimensions are approximate and for illustrative purposes only.
@Realty gives no guarantee, warranty or representation as to the accuracy and layout.
All enquiries must be directed to the agent, vendor or party representing this floor plan.