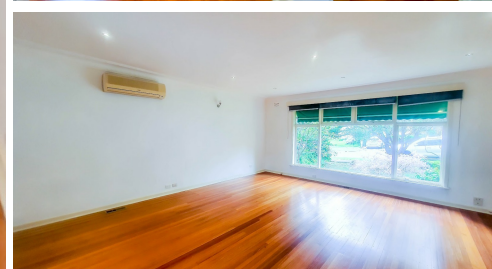
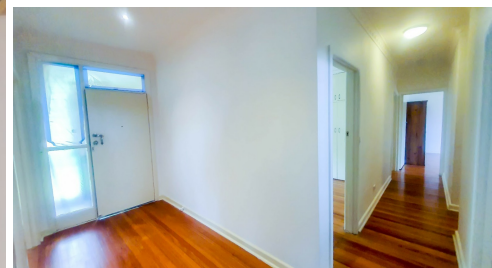


2 ASTER COURT MOUNT WAVERLEY



FOR LEASE

FOR LEASE: MOUNT WAVERLEY | 3 BED + 2 BATH + 1 CAR | SPACIOUS FAMILY HOME WITH A LARGE BACKYARD

This charming family home in Mount Waverley offers a blend of modern conveniences and classic appeal. Featuring three spacious bedrooms with built-in robes, including a master bedroom with a private ensuite, this home is perfect for growing families.

The heart of the home is the separate kitchen, which overlooks the beautifully maintained garden. It's equipped with a rangehood, cooktop, oven, and dishwasher. The central bathroom features a shower over bath and a separate toilet. With a separate laundry, ample storage, floorboards throughout, gas ducted heating, reverse cycle cooling, a secure garage, and a serene garden retreat, this home is both practical and stylish.

Key Features:

- 3 spacious bedrooms with built-in robes, including a master bedroom featuring its own ensuite
- Separate kitchen with rangehood, cooktop, oven, and dishwasher
- Central bathroom with shower over bath and separate toilet
- Gas ducted heating & reverse cycle cooling
- Floorboards throughout the living spaces & Bedrooms
- Garage with secure parking
- Beautiful garden surrounds

* We encourage you to inspect our 3D Virtual tour, Video walkthrough and photos provided here and submit your rental application by clicking the Apply button. we can organize one private inspection for the finalized tenant before settlement occurs.

* Inspections: By Appointments only. Please register your details with the agent before you attend the advertised inspection time slots. An inspection may be cancelled or rescheduled without prior notification. Alternatively, please call Nandana on 0452611234 to schedule your private inspection where possible.

This property is ideally located for convenience, just a 10-minute walk from Mount Waverley

3 BED | 2 BATH | 1 CAR

PRICE:
\$700

OPEN FOR INSPECTION:
N/A



Nandana Peiris
0452611234
nandana@atrealty.com.au
Real Alliance