

SOLD

NEW PRICE! BEST VALUE IN EVANS HEAD - MUST SEE!!

Situated in the highly popular town of Evans Head, positioned on the second level within eight exclusive units, this property is designed for low maintenance living without sacrificing space or style.

The unit boasts an open plan living and dining area, kitchen is equipped with stone benchtops, electric oven & cooktop with ample cupboard space with space for a dishwasher, Freshly painted throughout, the master bedroom is filled with natural light and features a built-in wardrobe, ceiling fans for year-round comfort.

With everything right at your doorstep, located within walking distance to Evans Head's, vibrant town center, shops, local clubs & beautiful beaches this property, offers modern living with the relaxed charm of coastal life.

Whether you're looking for a new home or a smart investment, this unit offers secure, convenient, and stylish living in the heart of Evans Head. The property includes a designated carport with the convenience of nearby public transport.

Positioned just 40 minutes from Lismore and 30min from Ballina, and 45 minutes from Byron Bay via the Pacific Highway inspection is a must. For more information or to arrange an inspection please call Chris Williams on 0428 333 447

1 BED | 1 BATH | 1 CAR

PRICE:
\$425,000

OPEN FOR INSPECTION:
N/A

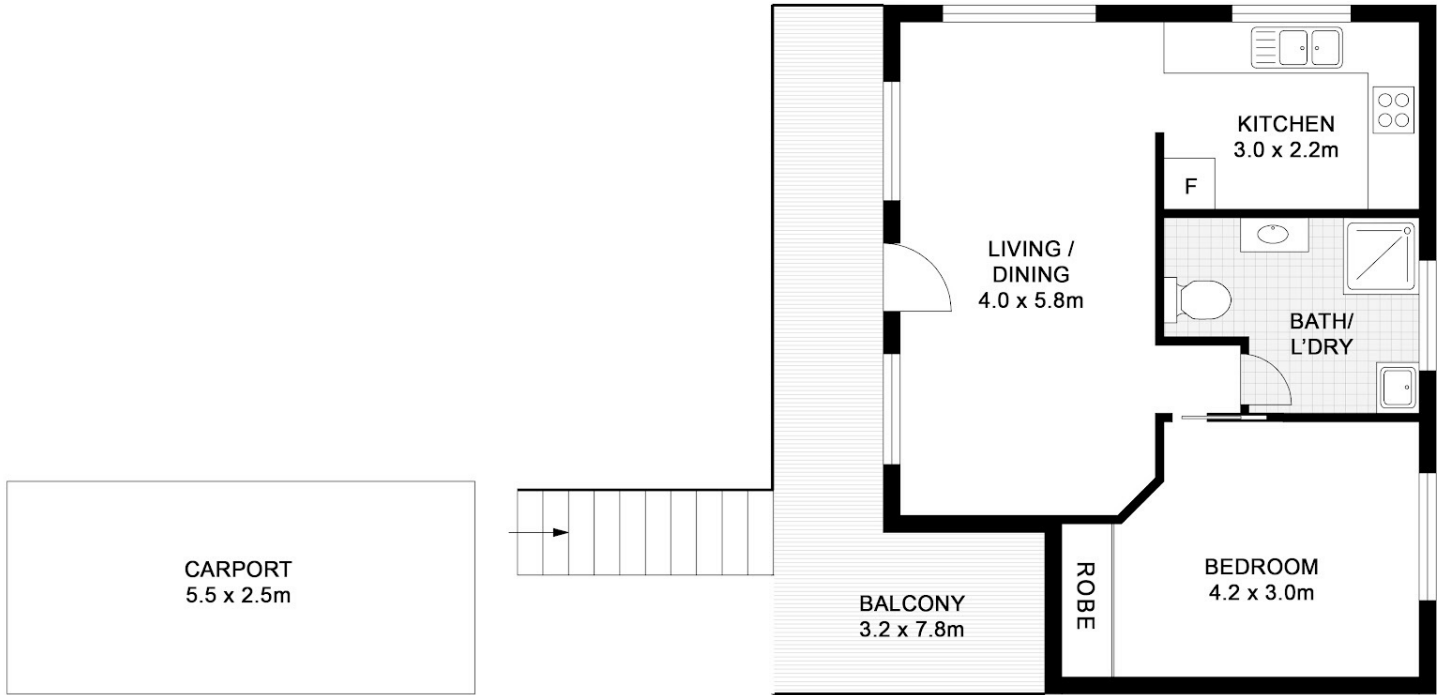


Chris Williams
0428333447
chrisw@atrealty.com.au
www.atrealty.com.au

4/40 Woodburn St, Evans Head



APPROXIMATE AREAS
INTERNAL: 69m²
EXTERNAL: 28m²



Disclaimer: Please note this floor plan is for marketing purposes and is to be used as a guide only. All dimensions are estimates only and may not be exact measurements.