



FOR SALE

STUNNING 2 BEDROOM UNIT WITH STREET ACCESS! PRICE GUIDE \$670,000 - \$699,000

Welcome to this immaculate unit in the beautiful suburb of Parklea, NSW. A stunning unit in the heart of this thriving community is now available for you to make your own. Whether you are a first-time buyer, a young family, or an investor looking for a prime location, this property has everything you need and much more.

As you step into this freshly painted, modern unit, you will be immediately impressed by the spacious and open floor plan. The living area is flooded with natural light, giving the space a warm and inviting atmosphere. The sleek and stylish kitchen is perfect for the home chef, with ample storage space, high-quality appliances, and a breakfast bar for casual dining.

The unit boasts two generous bedrooms, each with their own built-in wardrobe. The master bedroom comes complete with an ensuite bathroom, providing the ultimate convenience and privacy. The second bedroom is perfect for a child's room, guest room, or even a home office. The unit also features a second full bathroom, ensuring that everyone has their own space and comfort.

But the real gem of this property is the two outdoor living spaces. There is a huge outdoor entertaining area at the front of the unit which is perfect for hosting guests for a summer BBQ and boasts street access for easy arrival. Alternatively, step out onto your private back balcony and bask in the stunning views of the surrounding gardens. It's the perfect spot to enjoy your morning, or simply relax and unwind after a long day.

Located in the highly sought-after suburb of Parklea, this unit offers the perfect balance of suburban living and city convenience. You are just a short drive away from major shopping centers, restaurants, and entertainment options. And for those who commute, the nearby train station and easy access to major highways make getting to work a breeze.

But what truly sets this property apart is the sense of community and lifestyle it offers. Parklea is known for its friendly and welcoming atmosphere, with plenty of parks, playgrounds, and walking trails for outdoor enthusiasts. Plus, with top-rated schools, this is the perfect place to raise a family and give your children the best education possible.

2 BED | 2 BATH | 1 CAR

PRICE:

\$670,000 - \$699,000

OPEN FOR INSPECTION:

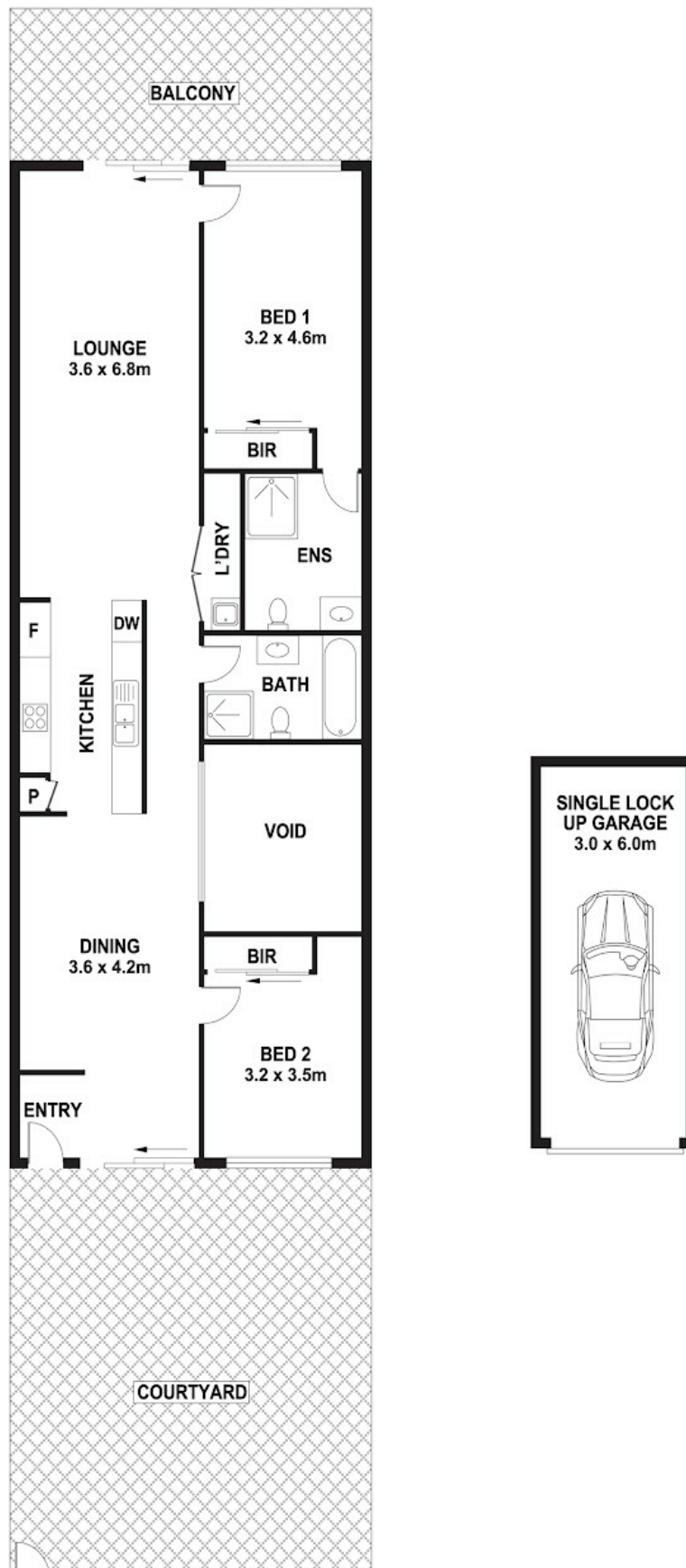
N/A



Judy Pope
0490045875

judy.pope@atrealty.com.au

www.atrealty.com.au



Disclaimer: Please note this floor plan is for marketing purposes and is to be used as a guide only. All dimensions are estimates only and may not be exact measurements.

90/11 GLENVALE AVENUE, PARKLEA

Judy Pope
0490045875

judy.pope@atrealty.com.au

PLANS SHOWN ARE FOR MARKETING PURPOSES ONLY, ALL DIMENSIONS ARE APPROXIMATE AND NOT TO SCALE. THEY ARE SUBJECT TO ERRORS AND INACCURACIES AND NO LIABILITY WILL BE ACCEPTED. INTERESTED PARTIES SHOULD MAKE THEIR OWN ENQUIRIES.



