



# FOR SALE

## SOLD! BUYERS WAITING - CONTACT SHENDELLE!

### Features You Will Love:

- **Modern Kitchen:** An expansive kitchen with generous counter space and updated appliances, including a 90cm stainless steel gas cooktop, 60cm wall oven, rangehood, fridge recess, double-door pantry, dishwasher, and double sink. A breakfast bar provides additional seating.
- **Open Plan Living:** The dining area, adjacent to the kitchen, offers views of the rear garden through large windows. The open-plan living and games room includes a cozy pot belly fireplace for the cooler months.
- **Formal Living & Activity Area:** The second living space offers a cozy retreat, perfect for enjoying movies or sports, with elegant French doors to create privacy when desired. At the far end of the home, an additional activity area provides the ideal spot for hobbies, reading, or a play area for the kids.
- **Climate Control:** Ducted air conditioning throughout ensures year-round comfort. Additional split system air condition in the master suite.
- **Ample Parking & Workshop:** A double carport, side access via double gates to a concrete handstand 17 x 5.4m and a 15 x 6m mechanical workshop/shed with three-phase power provide plenty of space for vehicles and hobbies.
- **Master Suite:** The king-sized master bedroom features a walk-in robe and an ensuite with a separate toilet, vanity, shower recess, and a built-in corner spa bath.
- **Home Office:** Located at the entry this home office is equipped with NBN connection, perfect for remote work.
- **Additional Bathroom:** The second bathroom, accessible from both the hallway and bedroom 4, includes a single vanity and large shower recess.
- **Laundry Room:** This functional laundry space includes a walk-in linen closet for ample storage, direct access to the outdoor washing line.

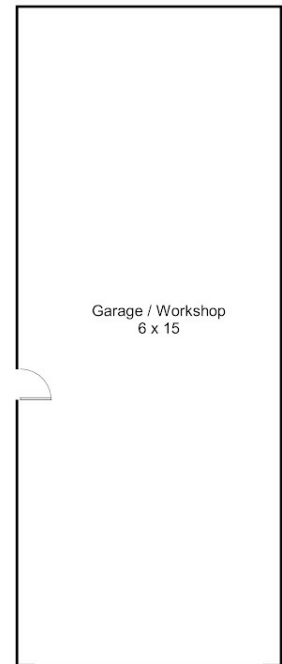
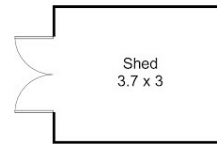
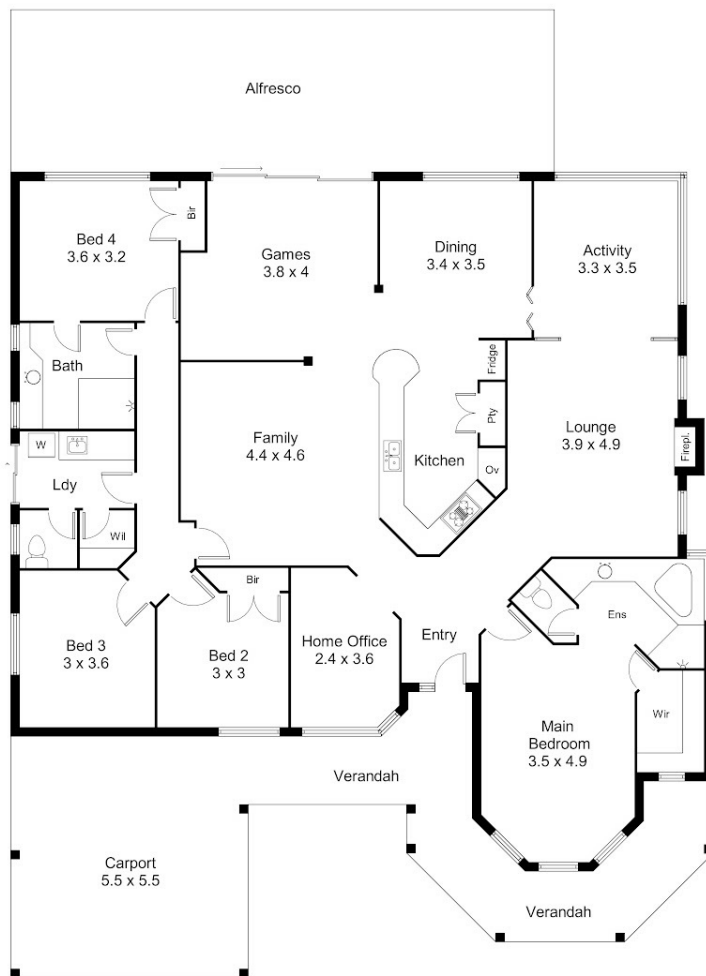
4 BED | 2 BATH | 5 CAR

PRICE:  
CONTACT AGENT

OPEN FOR INSPECTION:  
N/A



**Shendelle Harding**  
**0412713911**  
harding@atrealty.com.au  
[www.atrealty.com.au](http://www.atrealty.com.au)



/ for information and guidance purpose only /  
measurements shown are approximate



Disclaimer: Please note this floor plan is for marketing purposes and is to be used as a guide only. All dimensions are estimates only and may not be exact measurements.