



# SOLD

## RENOVATED AND READY TO GO.

Fresh, Chic, light, and airy, this charming 122 sqm renovated apartment offers a perfect blend of contemporary style and comfortable living, making it ideal for a lucrative investment or a cosy permanent residence.

This is a true beachside haven, and you can move in immediately.

Just a Stone's throw from Solander Esplanade, this prime location offers unparalleled convenience and a magnificent, active, peaceful lifestyle. Whether strolling the foreshore or kayaking the passage, there is something for everyone. BBQ recreational areas, playgrounds, Shopping, and public transport are right on your door, making your daily life a breeze. The renowned Pacific Harbour Golf Club is just a short drive away for a round of golf or some fine dining.

Ground level greets the expansive combined living space that seamlessly flows from a generous, well-equipped kitchen to a plethora of space for comfort and dining.

Unwind on one of the two ground-level courtyards—the front courtyard for social gatherings and the more secluded at the rear for private relaxation—or escape to the elegant private deck adjoining the primary bedroom upstairs.

The upper level boasts two generous bedrooms with built-in robes, serviced by a sleek bathroom and separate restroom.

Easterly sea breezes and large windows enhance all areas, inviting the outdoors. The comfort of air conditioning and ceiling fans provide a pleasant place to retreat, adding to the overall allure of coastal living.

The modern amenities ensure a luxurious and comfortable living experience for the holidaymaker or owner-occupier.

Take advantage of this tremendous opportunity to make 10/2 Venus Court your new beachside retreat. This charming apartment is available for immediate move-in. Attend the next open home or call Tracie at 0401091182 to schedule your viewing and secure your beach dream.

-Refreshingly renovated with a modern vibe

2 BED | 1 BATH | 1 CAR

PRICE:  
\$575,000

OPEN FOR INSPECTION:  
N/A

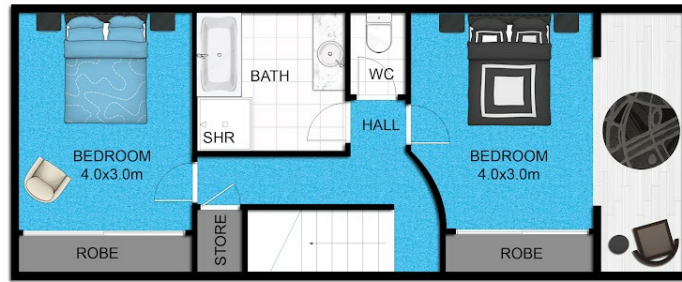


**Tracie Robinson**  
**0401091182**  
tracierobinson@atrealty.com.au  
[www.atrealty.com.au](http://www.atrealty.com.au)



**Bribie Island  
Properties**  
Tracie Robinson

@realty



FIRST FLOOR PLAN



GROUND FLOOR PLAN

Disclaimer: Whilst every effort has been made to ensure the accuracy of these particulars, no warranty is given by vendor or the agent as to their accuracy. Interested parties should not rely on these particulars as representation of fact but must instead satisfy themselves by inspection or otherwise.

Disclaimer: Please note this floor plan is for marketing purposes and is to be used as a guide only. All dimensions are estimates only and may not be exact measurements.