



FOR SALE

SUMMER STUNNER! 1377M2 OF WOW!

Discover the perfect family oasis in the desirable Brooks Reach Estate with this stunning single-level home. 37 Mallon Avenue boasts a unique, award-winning design by McDonald Jones Homes and focuses on versatile use of space and year-round entertaining. Here's what you'll love:

- 4 spacious bedrooms with ceiling fans plus Separate study or 5th bedroom.
- A huge main suite with walk through robe and designer ensuite plus sliding doors access out to the pool deck. You will feel like you're on a holiday every day
- 2nd living or media room, perfect for movie nights.
- Massive chef's kitchen over-looking the spacious open plan living and dining area.
- Adjoining alfresco dining complete with Travertine pavers and motorised privacy screens boasting beautiful south-west escarpment views.
- 1377m2 fully fenced corner block with back gated access perfect for kids and pets, or perhaps for extra garage space or granny flat (STCA). Concept plans for a granny flat can be provided upon request.
- Stunning in-ground pool, with attached covered entertaining deck.
- Ducted reverse-cycle air conditioning throughout
- Over-sized double garage with internal access

The rarity of a corner block this size with all its versatility cannot be understated. Don't miss this fantastic opportunity! Phone Peter Bullman today for more information.

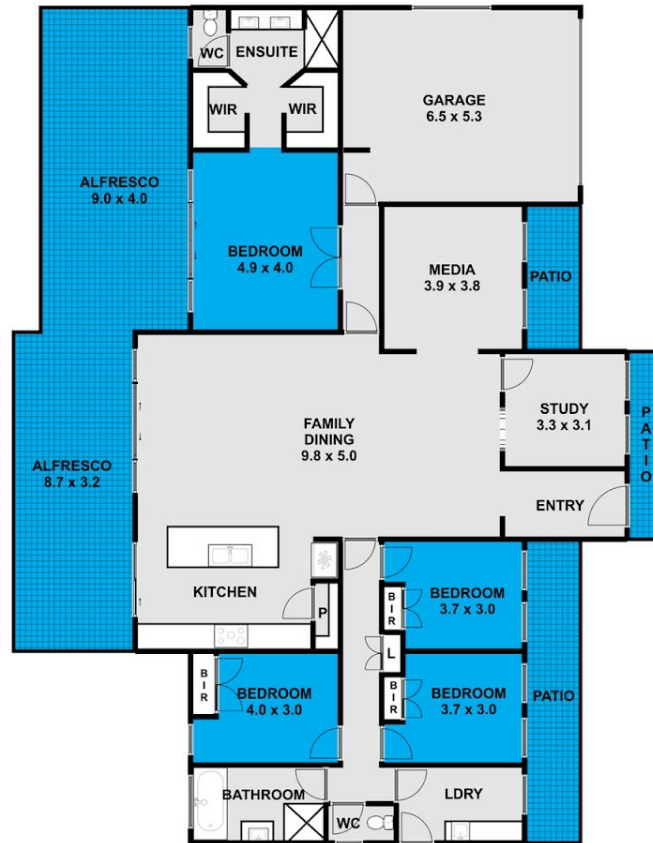
5 BED | 2 BATH | 2 CAR

PRICE:
Contact Agent

OPEN FOR INSPECTION:
N/A



Peter Bullman
0401394394
peterb@atrealty.com.au
www.atrealty.com.au



This floor plan including furniture, fixture measurements and dimensions are approximate and for illustrative purposes only.
@Realty gives no guarantee, warranty or representation as to the accuracy and layout.
All enquiries must be directed to the agent, vendor or party representing this floor plan.

37 Mallon Avenue Horsley

Disclaimer: Please note this floor plan is for marketing purposes and is to be used as a guide only. All dimensions are estimates only and may not be exact measurements.