



# FOR SALE

## ARCHITECTURAL ELEGANCE MEETS CLIMATE COMFORT AND EFFICIENCY

A unique opportunity to acquire this large, architecturally designed split-level executive family home, thoughtfully enhanced with modern upgrades, offered for sale for the first time. Located in prestigious Edenbrooke Estate, a blue-ribbon area of Brisbane, this property boasts numerous features ideal for contemporary living.

### House

- Architecturally designed split-level home
- North-facing capturing breezes and views
- Open plan living with raked ceilings
- High ceilings throughout
- Seamless indoor and outdoor living
- Elevated position
- Quiet col-de-sac location
- Not flood affected

### Kitchen

- Generous open-space kitchen
- New Caesarstone benchtops
- New European Bosch Appliances: induction cooktops, oven, dishwasher,
- Plenty of cupboard space
- Large pantry

### Bedrooms

- 5 generously sized bedrooms
- Master bedroom (18m<sup>2</sup>) with walk-in wardrobe, ensuite and separate toilet

### Garden

- Living space flows onto a large verandah and garden
- Staggered terrace doors to the verandah
- Fully established lush native garden
- Fully fenced – great to keep your pets safe
- Irrigation system installed

5 BED | 2 BATH | 2 CAR

### PRICE:

Contact Agent

### OPEN FOR INSPECTION:

N/A

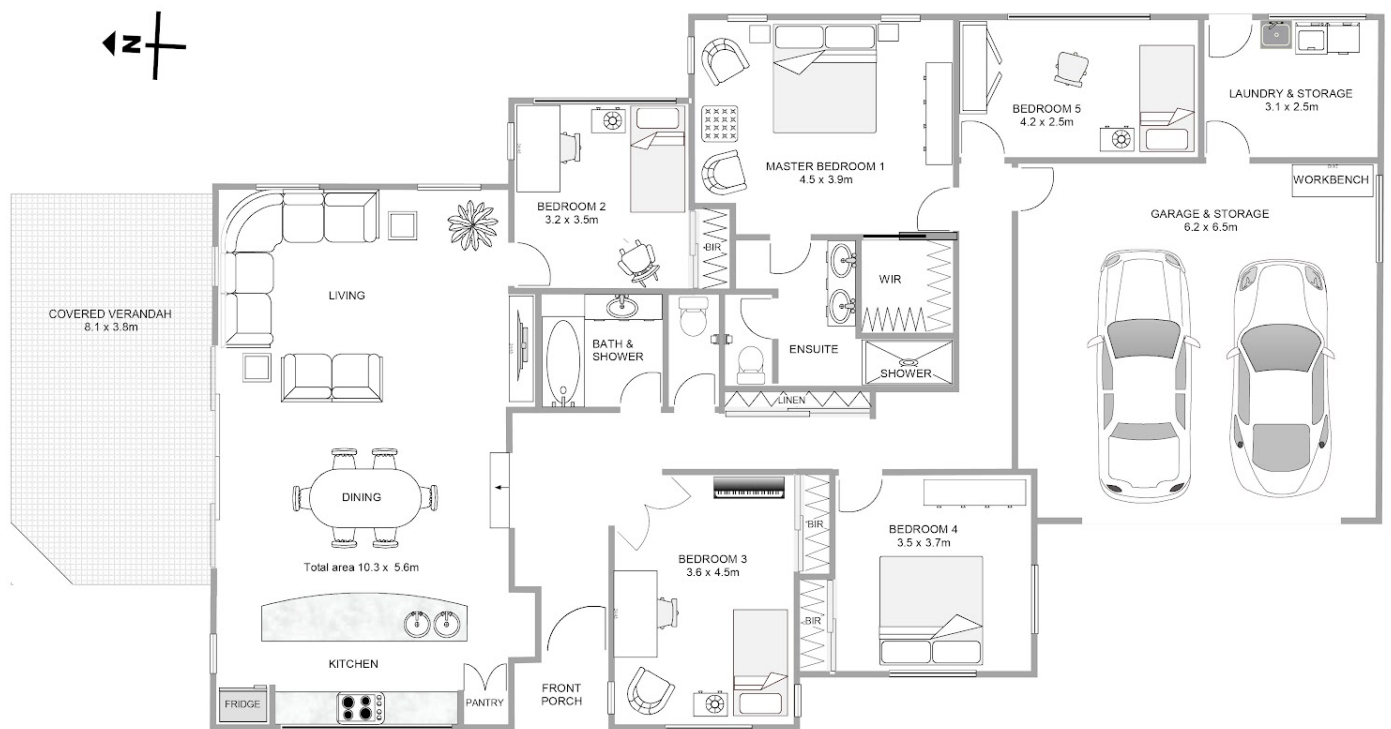


**Chris Novak**

**0434532144**

[chrisnovak@atrealty.com.au](mailto:chrisnovak@atrealty.com.au)

[www.atrealty.com.au](http://www.atrealty.com.au)



CHRIS NOVAK | 0434 532 144 | [chrisnovak@atrealty.com.au](mailto:chrisnovak@atrealty.com.au)  
[www.atrealty.com.au](http://www.atrealty.com.au)

Disclaimer: Whilst every effort has been made to ensure the accuracy of these particulars, no warranty is given by the vendor or the agent as to their accuracy. Interested parties should not rely on these particulars as representations of fact but must instead satisfy themselves by inspection or otherwise.

Disclaimer: Please note this floor plan is for marketing purposes and is to be used as a guide only. All dimensions are estimates only and may not be exact measurements.