

23 DORRIGO STREET, GLENREAGH, NSW, 2450



**SOLD**

## BESPOKE OCTAGONAL HOME ( ON 1,047M<sup>2</sup>OF LAND ) IN GLENREAGH

You'll find this unique home nestled in a cul-de-sac in the village of Glenreagh. As you enter through the front door, panelled by lead light windows, you will be greeted with a central courtyard/garden.

The house comprises of 4 octagons which around this central feature. The 1st octagon offers a large living space and walkthrough to the kitchen/dining area both featuring striking 16 ft vaulted ceilings lined in brush box timber. The timber is repeated lining the walls to dado height.

The silky oak kitchen features a new cooktop and all electric appliances, a double sink, large pantry and plenty of space for a fridge/freezer. Cyprus pine flooring creates continuity in a home that is designed to connect and reflect. Flowing on from the dining room is another walkway functioning as a laundry, linen cupboard and separate toilet which brings you to the next octagon offering another living space to compliment the 2 bedrooms. An ideal area for children.

The flow of this home will take you into a 2 way bathroom consisting of a separate shower, bath, vanity and toilet.

You've just about completed the circle as you enter the main bedroom from the bathroom. A creative Hollywood wardrobe gives great storage. The ceiling in this room is bespoke as the rest of the home and its quilted effect is perfect for the ambience in a bedroom.

The back veranda off the kitchen will take you out to a level 1047m<sup>2</sup> fully fenced yard with a 2 car workshop/garage accessed through the back lane. If you are looking for a unique bespoke home, full of character and wow then your search stops here.

Contact Cheryl Donaldson on 0466 037 468 for your inspection on this marvellous property

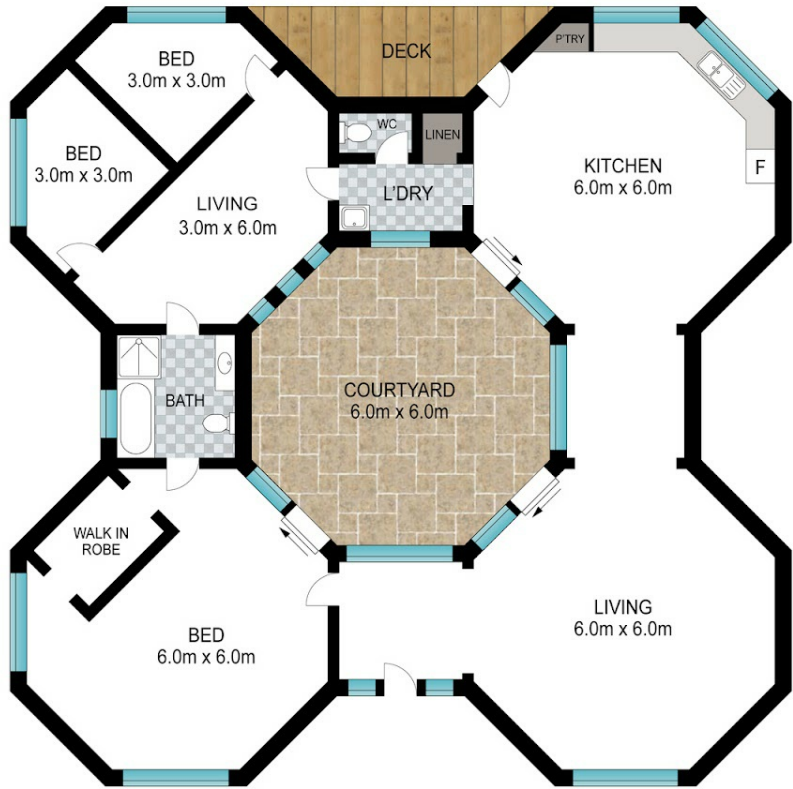
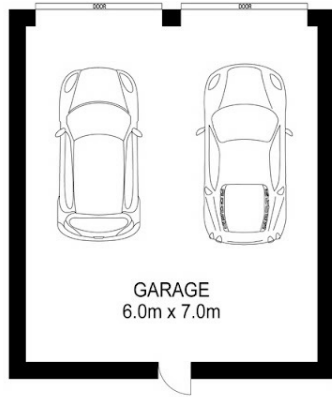
**3 BED | 1 BATH | 2 CAR**

**PRICE:**  
\$668,000

**OPEN FOR INSPECTION:**  
N/A



**Cheryl Donaldson**  
**0466037468**  
cheryl@atrealty.com.au  
[www.atrealty.com.au](http://www.atrealty.com.au)



INT: 157 m<sup>2</sup>  
EXT: 38 m<sup>2</sup>

Scale in metres. Indicative only. Dimensions are approximate. All information contained herein is gathered from sources we believe to be reliable. However, we cannot guarantee its accuracy and interested persons should rely on their own enquiries.

23 Dorrigo Street, Glenreagh



Disclaimer: Please note this floor plan is for marketing purposes and is to be used as a guide only. All dimensions are estimates only and may not be exact measurements.

**Cheryl Donaldson**  
0466037468  
cheryl@atrealty.com.au  
[www.atrealty.com.au](http://www.atrealty.com.au)

