



Located in Palm Lakes Over 50's
Lifestyle Resort Beachmere Bay



FOR SALE

WELCOME TO VILLA 70 OAKDALE II DESIGN – COASTAL HAVEN AT PALMLAKE BEACHMERE BAY RESORT

Discover Villa 70, an exceptional residence nestled within the exclusive PalmLake Beachmere Bay over 50's lifestyle resort. This stunning home, set on a corner site and the largest site in the resort, offers a generous 234.8 m² of living space on a beautifully landscaped 528 m² lot. Positioned at the edge of the resort, it boasts serene views of water, the golf course, lush bushland and guaranteed privacy.

Upon entering, you'll be welcomed by an open floor plan that maximizes space and invites natural light. The interiors combine modern features with timeless Hamptons-inspired elements, creating a warm and inviting atmosphere.

The heart of the home is the gourmet kitchen, equipped with stylish Smeg appliances. Enjoy the sleek 2 pac cabinetry, 40mm stone benchtops, and classic subway tile backsplash, making it perfect for quick meals or elegant dinner parties.

The expansive living area features modern decorative high ceilings and large windows that enhance the light-filled ambiance. Sliding doors lead to an extended outdoor pergola, offering a perfect space for relaxation and entertaining.

Discreetly located behind the living area, a thoughtfully designed study nook provides a quiet space for work or reading, seamlessly blending functionality with the overall open layout.

The master suite serves as a serene retreat, complete with a spacious bedroom, an extensive walk-in robe, and a luxurious ensuite. The ensuite features a glass/aluminium folding door, elegant fixtures, a double vanity, and a separate walk-in shower, complemented by an extra fan for comfort.

Two additional bedrooms provide comfortable accommodations for guests or can be transformed into a home office or TV room. A well-appointed second bathroom with modern fixtures services these rooms.

3 BED | 2 BATH | 2 CAR

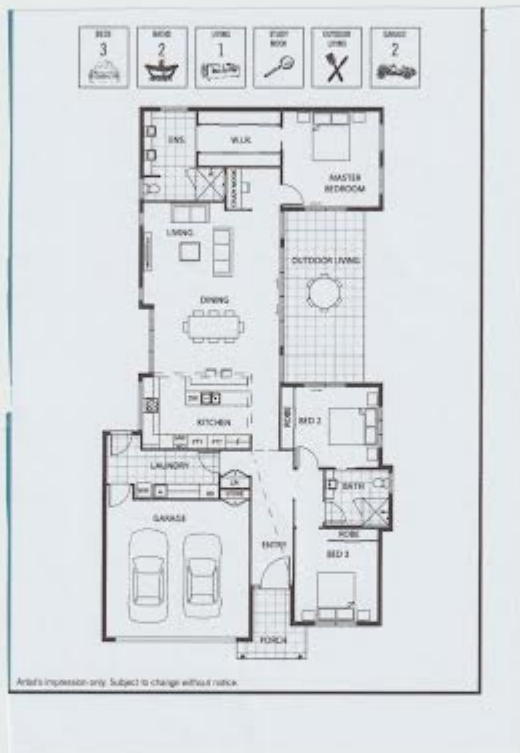
PRICE:
\$1,375,000

OPEN FOR INSPECTION:
N/A



Michelle Rochow
0402002245

michelle.rochow@atrealty.com.au
www.atrealty.com.au



Disclaimer: Please note this floor plan is for marketing purposes and is to be used as a guide only. All dimensions are estimates only and may not be exact measurements.