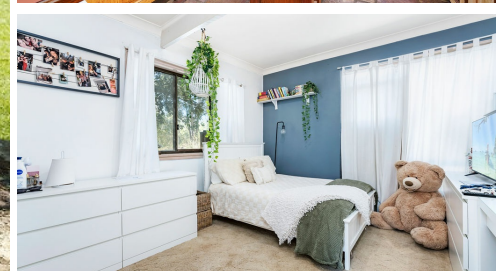


11 ASHMEAD ROAD, MINTO, NSW, 2566



FOR SALE

YOUR PRIVATE OASIS AWAITS, ON APPROXIMATELY 4.1 ACRES AT 11 ASHMEAD ROAD, MINTO!

Discover the perfect retreat at 11 Ashmead Road, Minto, where privacy meets potential! This property offers an idyllic escape from the hustle and bustle. Enjoy serene outside entertainment areas, perfect for hosting gatherings or simply unwinding in nature. With exciting future development possibilities subject to council approval, this is not just a home, it's an investment for your dream lifestyle. Don't miss out on the chance to own this extraordinary piece of paradise!

Features include:

- Three generously sized bedrooms.
- A spacious study that can easily be converted into a fourth bedroom.
- Two well-appointed bathrooms
- A stunning sunroom filled with natural light, thanks to expansive floor-to-ceiling windows.
- Outdoor laundry
- Double lock up garage with attached teenage/ in-law retreat. Featuring one bedroom, one bathroom and a cosy living area.
- Hot water solar system booster

5 BED | 3 BATH | 2 CAR

PRICE:

Expression of Interest

OPEN FOR INSPECTION:

N/A



Huss Al Salemi

0411699419

huss@atrealty.com.au

www.agencycentral.com.au

