

SOLD

SOLD BY ROBYN HUNT REAL ESTATE

Prime Cul-De-Sac Location - Low Maintenance, 2-Bedroom Duplex Unit

Tucked away in a peaceful cul-de-sac within a sought-after neighborhood, this delightful 2-bedroom duplex unit offers comfort, convenience, and an enviable lifestyle.

Smart investors, keen first-home buyers, or those looking to downsize should not miss this one.

With a raked ceiling in the living room creating a wonderful sense of space, and a tranquil private courtyard setting providing a haven to enjoy the outdoors, this really is a lovely place to call home.

Key Features:

- 2 Spacious bedrooms with built-in wardrobes and ceiling fans, perfect for relaxation and restful nights
- 1 Contemporary bathroom, with bath and separate toilet
- Single lock-up garage with seamless internal access, ensuring security and ease
- Located in a quiet, family-friendly cul-de-sac, offering privacy and peace of mind

With its prime location, this property is close to parks, local schools, shopping centres, and public transport, making it a convenient yet quiet retreat.

In the words of the tenant: "It's an area where I feel safe, where everyone knows their neighbours and looks out for each other".

Whether you're looking for a solid investment opportunity or a low-maintenance lifestyle, this duplex unit ticks all the boxes.

Please note, there are no strata fees with this complex, just a shared building insurance policy.

Don't miss out on this exciting opportunity - contact Robyn Hunt today on 0448 448 758 to arrange your inspection!

** Disclaimer: Whilst every effort has been made to ensure the accuracy of these particulars, no

2 BED | 1 BATH | 1 CAR

PRICE:
\$500,000

OPEN FOR INSPECTION:
N/A

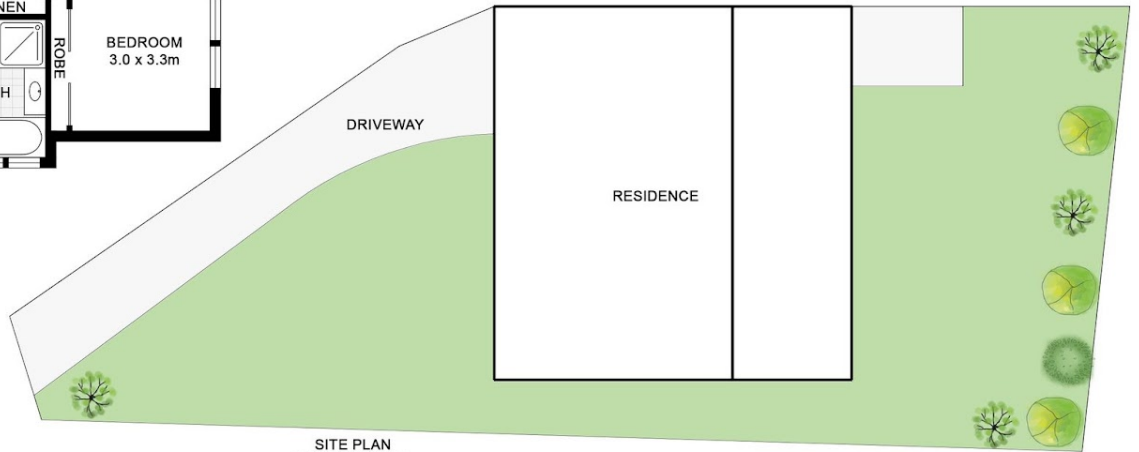
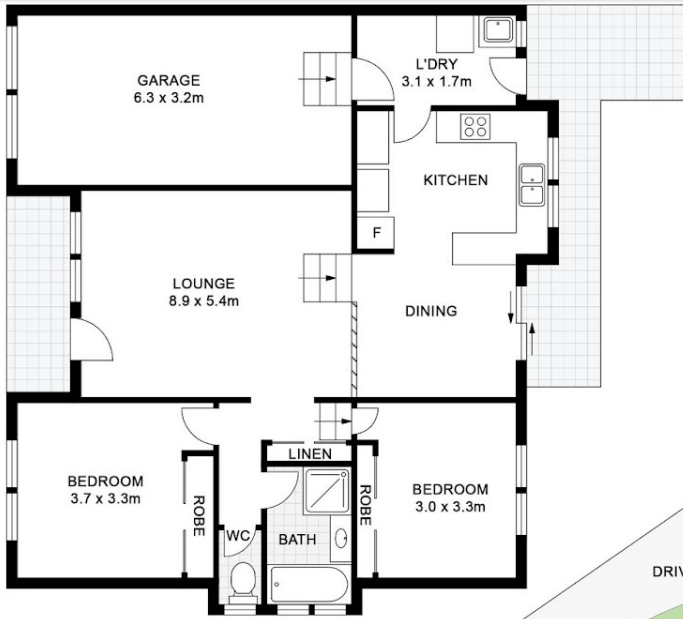


Robyn Hunt
0448448758
robyn@atrealty.com.au
www.atrealty.com.au

2/7 Stanley Court, Goonellabah



APPROXIMATE
AREAS
INTERNAL: 110m²
EXTERNAL: 15m²



SITE PLAN
(NOT TO SCALE)

Disclaimer: Please note this floor plan is for marketing purposes and is to be used as a guide only. All dimensions are estimates only and may not be exact measurements.