



# FOR SALE

## CONTEMPORARY TROPICAL LIVING

Parramatta Park has fast become the go to suburb for those wishing to live on the city fringe and still have easy access to all that our tropical lifestyle offers. This spacious unit is located within easy walking distance of the CBD, Cairns Esplanade, Cairns High school and Cairns Base hospital. Built in approximately 2003, units in this boutique complex remain tightly held. "Villa Sanur" is a mix of contemporary design features with a Balinese twist, featuring timber effect louvres (Aluminium- maintenance free) and large outdoor entertaining areas, all designed to capture cooling breezes.

Located at the front of the building and on the first floor, the unit is situated for ease of access directly from the undercover car park. Unit 6 is one of only two units sharing the landing. Inside you will find neutral tones to complement the light and airy living areas. Thoughtfully laid out, with no wasted space the bedrooms are located at either end of the expansive open plan living / dining area each having direct access to a bathroom. The kitchen is located adjacent to the outdoor terrace providing ease of access for alfresco dining.

Once experienced, the lifestyle at "Villa Sanur" is sure to please.

### FAST FACTS: -

- High Gyprock ceilings
- 108 sqm of internal Living space + 40sqm Balcony
- Pets permitted subject to BC Approval
- Close to walking and bike tracks
- Fresh Tropical landscaped gardens with sparkling In – ground Pool
- Undercover parking, Security gated
- Storage cupboard big enough for bikes etc
- "Crim - mesh" security screens to balcony sliders
- Bedrooms with direct access to balcony
- Fully airconditioned throughout
- Carpets to bedrooms and fully tiled living areas
- Main bathroom with bath and overhead shower
- Tenanted until 12TH November 2024
- Kitchen with Dishwasher
- European Laundry with dryer

### THE NUMBER CRUNCH: -

- Rates approx. \$3,110 per annum
- BC levies approx. \$4,890.63 per annum

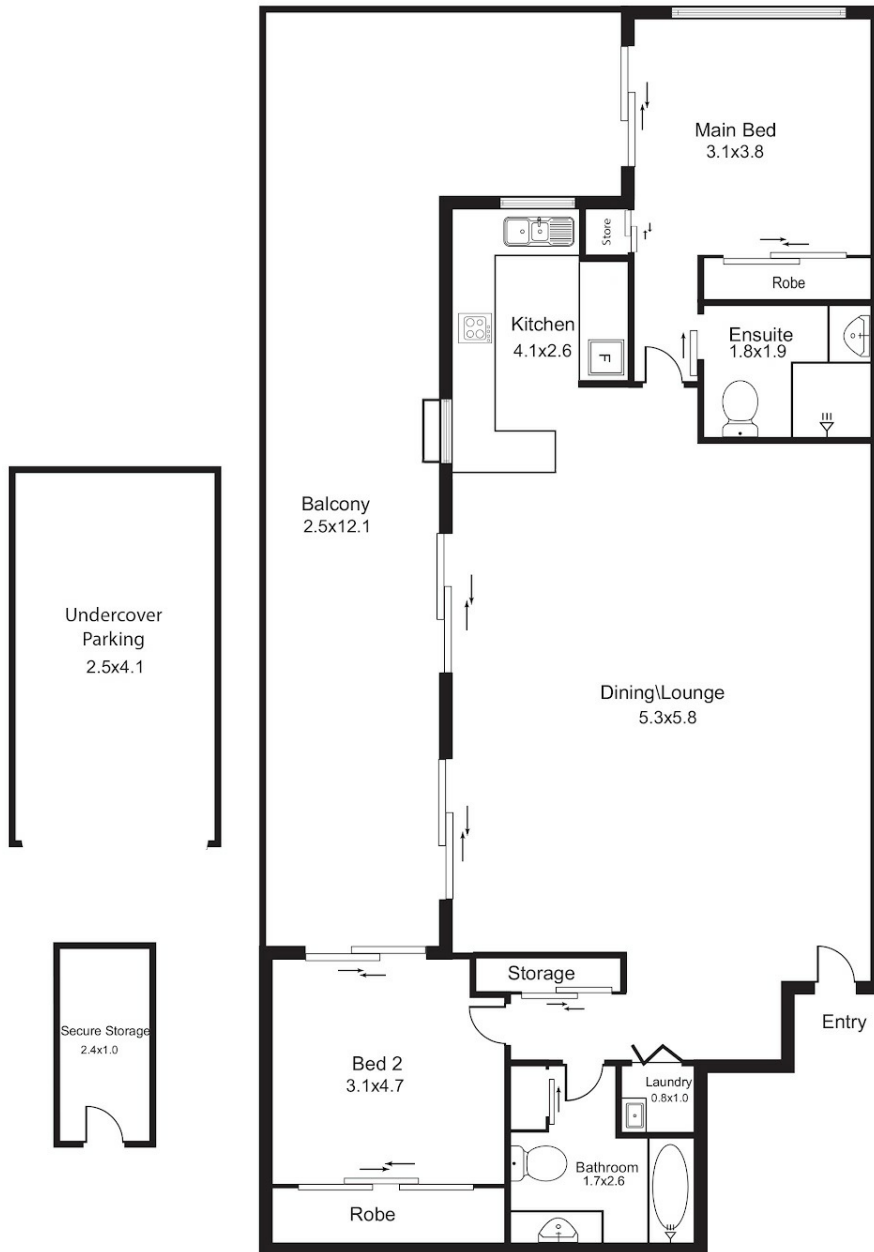
2 BED | 2 BATH | 1 CAR

PRICE:  
\$480,000

OPEN FOR INSPECTION:  
N/A



**Sue Anderson**  
**0402444084**  
 sue@atrealty.com.au  
[www.atrealty.com.au](http://www.atrealty.com.au)



Illustrative Purposes only Dimensions are approx.  
This drawing is not to scale

Disclaimer: Please note this floor plan is for marketing purposes and is to be used as a guide only. All dimensions are estimates only and may not be exact measurements.