

FOR SALE

SIMPLY STUNNING

Welcome to your dream home in the charming and vibrant suburb of Westmead, NSW. This beautiful house is waiting for you to make it your own and create unforgettable memories with your loved ones. With its prime location, spacious layout, and stunning features, this property is the perfect place to call your own.

As you pull up to the front of the house, you'll immediately be struck by its charming facade, surrounded by lush greenery and a white picket fence. Upon entering the property, you'll be greeted by a warm and inviting atmosphere that will make you feel right at home. The spacious floor plan is designed to cater to all your needs, offering plenty of room for your family to grow and thrive.

This stunning house boasts three spacious bedrooms, each with floorboards that add a touch of elegance and warmth to the space. The master bedroom is a peaceful retreat, with large windows that flood the room with natural light and offer a picturesque view of the surrounding neighborhood.

The main bathroom is modern and stylish, with sleek finishes and a spacious layout. It's the perfect place to relax and unwind after a long day, with a luxurious bathtub and a separate shower. You'll feel like you're in a spa every time you step into this beautiful space.

The heart of the house is the open-plan living and dining area, which is perfect for entertaining guests or spending quality time with your family. The living room features an open fireplace, creating a cozy and inviting atmosphere during the colder months. The second living room at the rear leads to the outdoor patio, where you can enjoy alfresco dining while admiring the beautifully landscaped backyard.

Speaking of the backyard, it's a true oasis, offering a peaceful escape from the hustle and bustle of daily life. The fully fenced yard provides privacy and security, making it the perfect place for young children and pets to play. And for those who love to tinker and create, there's a workshop where you can let your creativity run wild.

The property also offers a secure parking space, ensuring that your vehicles are safe and protected at all times. Plus, with the convenience of a split system air conditioning, you'll be comfortable and cool during the hot Australian summers.

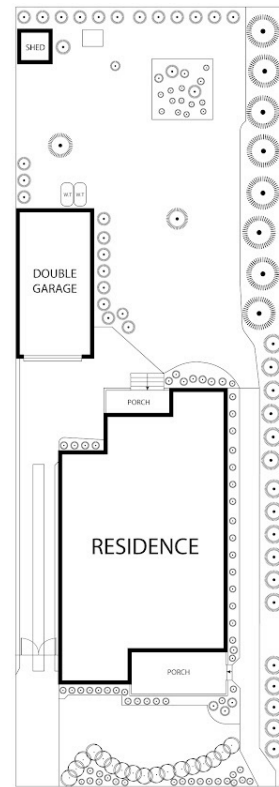
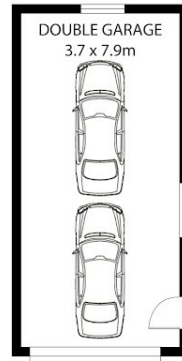
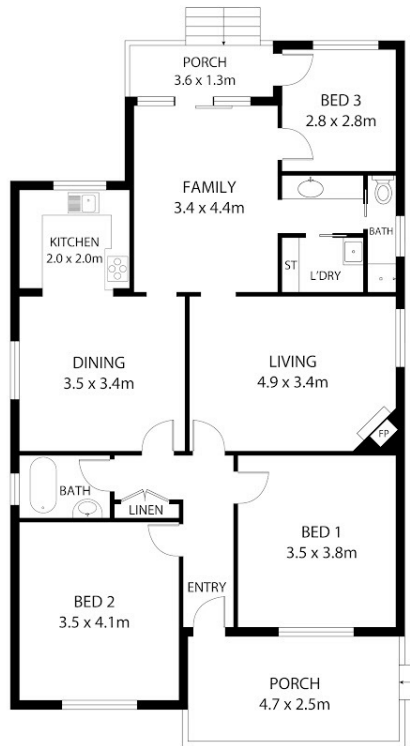
3 BED | 2 BATH | 1 CAR

PRICE:
Just Listed

OPEN FOR INSPECTION:
N/A



Magdalene Mitsis
0410480713
magdalenemitsis@atrealty.com.au
www.atrealty.com.au



13 Moree Avenue, Westmead



All information contained in this document is from sources we believe to be accurate, however we cannot guarantee its accuracy. Interested persons should make and rely on their own enquiries in relation to measurements, dimensions, layout, furniture and description.

Disclaimer: Please note this floor plan is for marketing purposes and is to be used as a guide only. All dimensions are estimates only and may not be exact measurements.