

FOR SALE

DUAL LIVING POTENTIAL – ENORMOUS FAMILY HOME ADJOINING PARKLAND & STATE FOREST - 5 BED + STUDY, 4 CAR GARAGING, RUMPUS & HUGE DECK

Nestled in a serene and exclusive setting on a 1050sqm block, with only one neighbour, this builder's own home offers the perfect blend of tranquility and space, with stunning bushland views and direct access to forest trails ideal for hiking and walking dogs it is truly special. This impressive property is designed for families to spread out, entertain, and enjoy peaceful living. Overlooking parkland adjoining the Bunyville State Forest, this premier home is situated in one of Albany Creek's most sought-after areas. With fresh internal and external paintwork, plush new carpets, and air-conditioning throughout, this property is ready for you to simply move in and enjoy. This enormous family home offers 5 generous built-in bedrooms, a study (or 6th bedroom), a luxurious new ensuite, 2 family bathrooms, and 2 separate double garages, each with their own level driveways, a large lounge/media room, a downstairs rumpus, and family and dining areas that open onto the massive, private entertaining deck. The lower level is ideal for those seeking separate dual living space for teens, or a potential granny flat.

Colourful hedges line a path to the front door and into the fully air-conditioned upper level, which offers 4 large living spaces, 4 bedrooms, 2 bathrooms, and double garage, all under soaring 9ft (2.7m) ceilings. Double doors lead from the garage into the huge open plan family and dining areas, which make moving sizeable furniture into the home a breeze. Remote-controlled translucent and block-out twin-blinds allow you to control the amount of natural light into these areas, and a skylight ensures a light filled kitchen throughout the day. The stylish kitchen boasts quality Kleenmaid appliances (750mm oven and cooktop with 5 burners complemented by a 900mm glass canopy rangehood) and an integrated Bosch dishwasher. Gleaming black glass splashbacks and stone benchtops (with a waterfall edge and breakfast bar), complement banks of storage cupboards, drawers and a deep corner pantry. There's room to prepare meals for the largest family or gathering, whilst being central to all living areas and overlooking the deck and adjoining parkland. Relax on the enormous 12m long deck and enjoy the cool north-easterly breeze and abundant birdlife, as you overlook the tree-studded parkland and nearby state forest.

The master suite has just been renovated with a customised walk-in robe, boasting rows of hanging space, shelving and drawers. The brand new luxurious ensuite features a huge walk-in

6 BED | 3 BATH | 4 CAR

PRICE:
Offers Over \$1,550,000

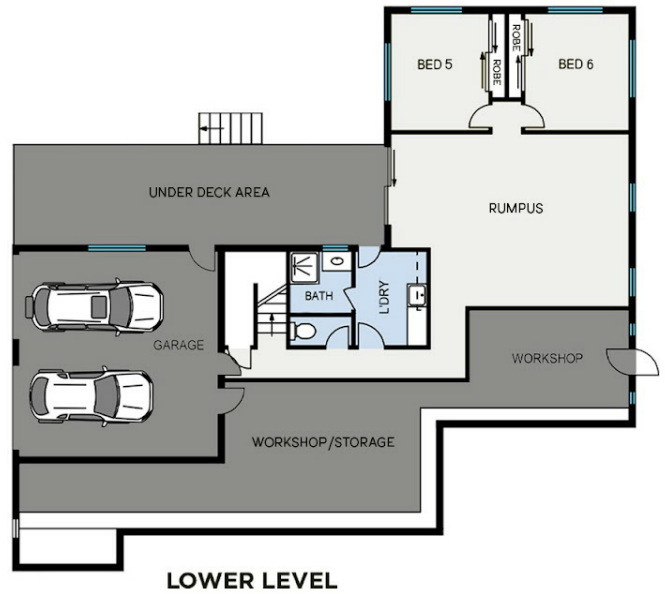
OPEN FOR INSPECTION:
N/A



Len Worthington
0402297355

len@lenworthingtonproperties.com.au
 lenworthingtonproperties.com.au

11 TINAROO COURT, ALBANY CREEK



Measurements are indicative only. Plans should not be relied on. Interested parties should make and rely on their own enquiries.

Disclaimer: Please note this floor plan is for marketing purposes and is to be used as a guide only. All dimensions are estimates only and may not be exact measurements.