



SOLD

EMBRACE THE COASTAL DREAM

Step into this breathtaking four-bedroom coastal haven, where modern elegance meets effortless comfort. Designed with your lifestyle in mind, the open-plan kitchen, living, and dining area bathes in natural light, creating a warm and inviting atmosphere. Picture yourself enjoying morning coffee as stacker doors open to a serene alfresco space, where you can soak in the stunning views of lush greenery and majestic mountains to the west. With custom blinds on the northern deck, you can relish this beautiful setting year-round, no matter the weather. Each bedroom offers a spacious retreat, perfect for rest and relaxation. The master suite is a true sanctuary, featuring a luxurious en-suite, walk-in-robe, and large windows with plantation shutters that add a touch of warmth. Offering a very low maintenance property with an easy-care yard this property is ideal for those seeking a more relaxed lifestyle. A thoughtfully designed central bathroom, practical laundry area, split system air conditioning, and double lock-up garage will ensure your comfort and convenience.

Nestled in one of Korora's most sought-after estates, this home is surrounded by beautifully crafted properties and is just a short stroll from Korora Primary School and pristine beaches. Imagine weekends spent relaxing by the shore or exploring the vibrant local community, all while being just five minutes away from the bustling heart of Coffs Harbour.

If you're dreaming of a relaxed coastal lifestyle, this exceptional home is more than just a place to live—it's the backdrop for cherished memories and a vibrant life by the sea. Don't miss the opportunity to make it yours.

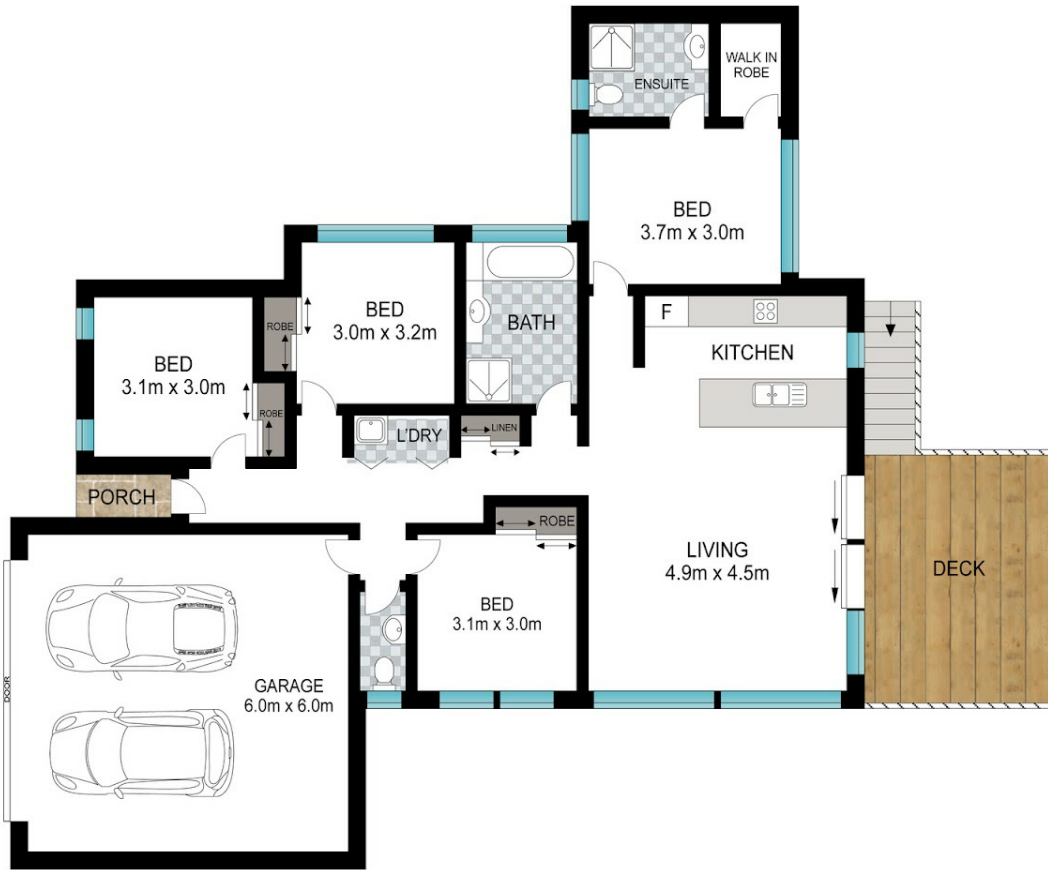
4 BED | 2 BATH | 2 CAR

PRICE:
\$960,000

OPEN FOR INSPECTION:
N/A



Bryce Heward
0423691322
bryce.heward@atrealty.com.au
www.atrealty.com.au



INT: 147 m²
EXT: 18 m²

Scale in metres. Indicative only. Dimensions are approximate. All information contained herein is gathered from sources we believe to be reliable. However, we cannot guarantee its accuracy and interested persons should rely on their own enquiries.

18 Bruce Taylor Cct, Korora



Disclaimer: Please note this floor plan is for marketing purposes and is to be used as a guide only. All dimensions are estimates only and may not be exact measurements.

Bryce Heward
0423691322
bryce.heward@atrealty.com.au
www.atrealty.com.au

