

22A BIRDSVILLE CRESCENT LEUMEAH



FOR SALE

YOUR DREAM HOME AWAITS: IMMACULATE TWO-BEDROOM DUPLEX IN PRIME LEUMEAH LOCATION!

This tastefully designed two bedroom duplex is stunning from entry to exit. Spread over an impressive two storey floorplan and equipped with modern quality inclusions, this home is ready for its new lucky owners to move straight into.

Features Include:

- Two generously proportioned bedrooms with built in robes
- Master suite located upstairs includes an ensuite, ceiling fan & a great sized balcony
- Spacious open plan living & dining room
- Well appointed kitchen with ample cupboard space
- Tasteful colour palette throughout
- Bathroom conveniently positioned with easy access from the 2nd bedroom & living room
- Internal laundry
- Ample storage on both the entry & upper level
- Split system air conditioning
- Single lock up garage
- Low maintenance yard
- Newly built pergola, overlooking backyard.

This immaculately kept duplex has a lot to offer, located in a quiet pocket of Leumeah, it is conveniently positioned within a close proximity to local schools, local shops, Leumeah train station, sporting complexes, children friendly parks, Campbelltown CBD and so much more. This home is one to put at the top of your inspection list.

Agency Central believes that all the information contained herein is true & correct to the best of our ability however we encourage all interested parties to carry out their own enquiries.

2 BED | 2 BATH | 1 CAR

PRICE:

\$689,000 - \$719,000

OPEN FOR INSPECTION:

N/A

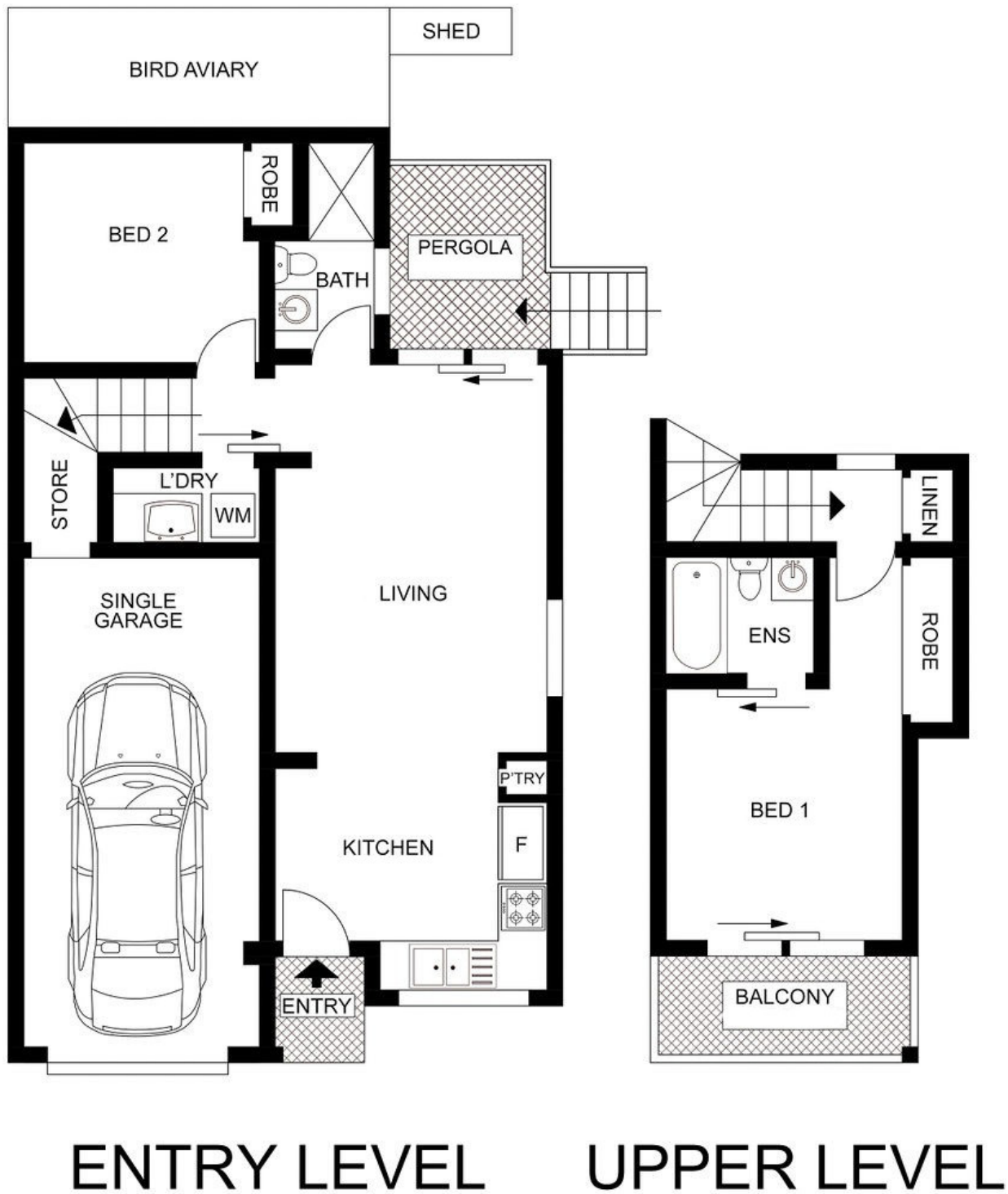


Huss Al Salemi

0411699419

huss@atrealty.com.au

www.agencycentral.com.au



ENTRY LEVEL

UPPER LEVEL

 AGENCY

Disclaimer: Please note this floor plan is for marketing purposes and is to be used as a guide only. All dimensions are estimates only and may not be exact measurements.

22A Birdsville Crescent, Leumeah

Huss Al Salemi • All measurements are approximate • Drawn for marketing purposes only

0411699419

huss@atrealty.com.au

www.agencycentral.com.au

 @realty