

FOR LEASE

FULLY SERVICED APARTMENT. AVAILABLE MONTHLY.

This beautiful homely apartment faces north and looks out at the Pialba beach. Close to shops, restaurants and transport. Available fully serviced, includes power, water, internet. It requires a minimum booking of 28 days. Minimum documentation required.

TO INSPECT OR APPLY:

Phone Tingeeera Bespoke Beachfront Apartments. Ph 07 4124 5744

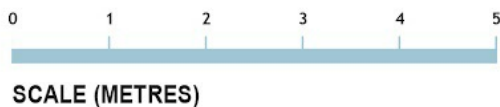
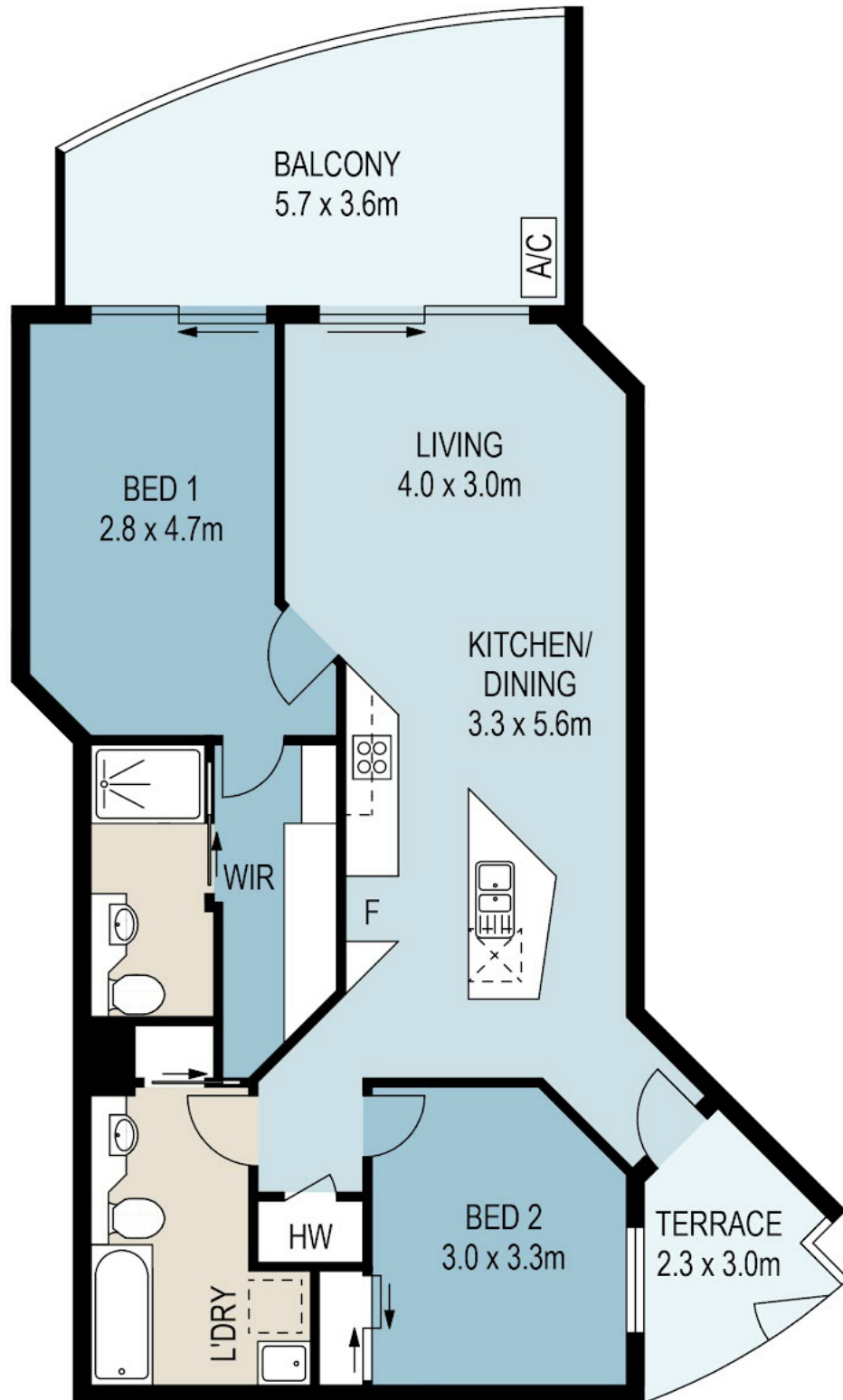
2 BED | 2 BATH | 1 CAR

PRICE:
\$1,400 per week

OPEN FOR INSPECTION:
N/A



Paul Capper
0466602803
paul.capper@atrealty.com.au
www.atrealty.com.au



INTERNAL	79.7sqm
EXTERNAL	22.4sqm
TOTAL	102.1sqm

Disclaimer: Please note this floor plan is for marketing purposes and is to be used as a guide only. All dimensions are estimates only and may not be exact measurements.

PLANS SHOWN ONLY INDICATIVE OF LAYOUT. DIMENSIONS ARE APPROXIMATE.

All information contained herein is gathered from sources we believe to be reliable. However we cannot guarantee its accuracy and interested persons should rely on their own enquiries.